



NOCE SLO Report Highlight

Faculty SLO Engagement

Fall 2024 – Spring 2025

Data presented in collaboration with the NOCE SLO team and the Office of Institutional Research and Planning (OIRP)



Introduction

This Faculty SLO Engagement Summary provides an overview of how faculty across NOCE have participated in Student Learning Outcomes (SLO) reporting during the 2024/25 academic year.

The report itself highlights faculty collaboration, professional development, and system improvements that have strengthened assessment practices.

It documents both the progress made, such as increasing faculty participation in data reporting, ensuring that all Course Outlines of Record (CORs) include SLOs, and resolving issues related to system inefficiencies and misinformation.





Professional Development Success

Fall 2023

34 faculty participated in SLO Overview training

Fall 2024

36 faculty attended hi-flex Canvas alignment training

Spring 2025

70 faculty joined hi-flex workshop, plus 6 in follow-up sessions

Ongoing Faculty Support

Faculty accessed continuous support through multiple channels. Office hours, held three times weekly, drew 3-4 faculty participants each month, with attendance increasing at the 9, 16, and 18 week points when courses concluded.



Weekly Office Hours

3 times per week with consistent faculty participation



Department Meetings

Faculty leads facilitated SLO discussions and onboarding



Cross-Department Collaboration

Example: ESL embedded SLO input into orientations, CTE verified course alignment

System Transition Challenges

When this cycle began, faculty were entering SLOs in eLumen, a legacy system that had become unreliable. The reporting process through eLumen created errors such as duplicates, inactive listings, or missing outcomes.

1

Problem Identification

After reviewing the data eLumen system proves unreliable with duplicates and missing outcomes

2

Solution Development

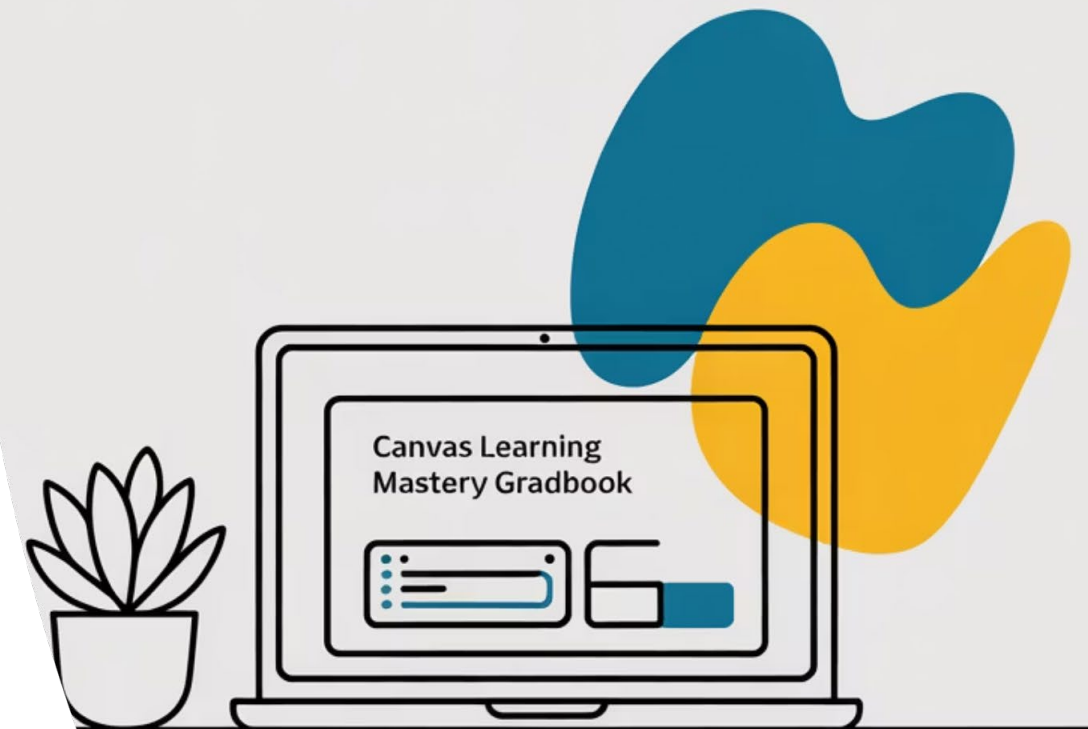
Identified a tool built into an already used tool, Canvas.

IT was instrumental in setting up this new process and assisted to import SLOs directly into Canvas

3

Implementation

Our team of VPI, IT leads, IRP, and faculty leaders came to the agreement to move to reporting data in the Canvas Learning Mastery Gradebook, thus becoming the official tracking tool



Technical Problem Resolution

Faculty and IT partnered through biweekly meetings to resolve issues during the transition. Specific courses required corrections before data could be imported successfully.

ENTR 115

Duplicate active course entries resolved

ELET 210

No active SLO listing - reactivated

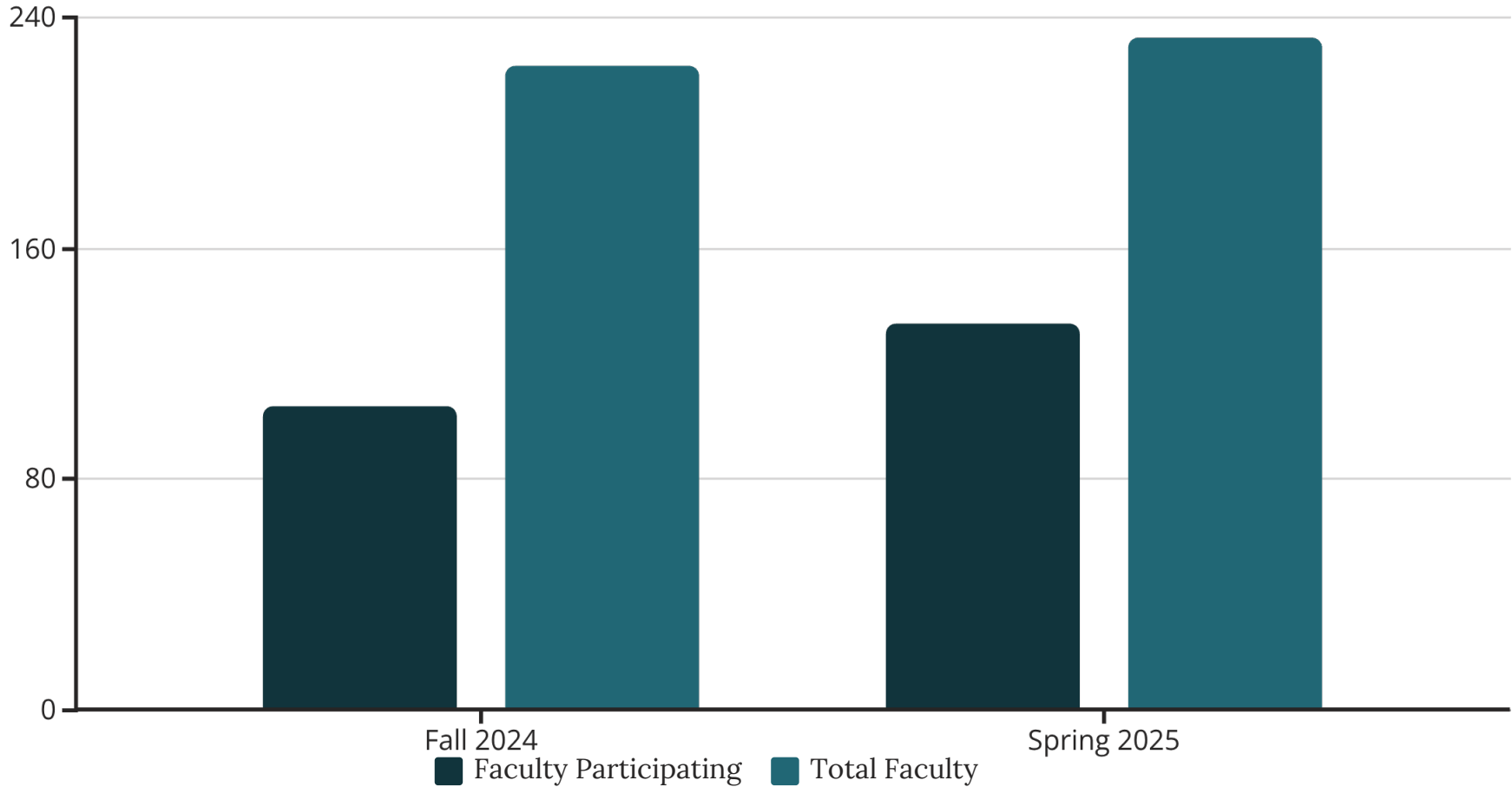
Multiple Courses

IHST 777, CC 215, CC 415, ESLA 777, LEAP 777 corrected

Through coordinated efforts, CurricUNET now reflects cleaner records, Canvas imports run smoothly, and faculty participation has increased.

Faculty Participation Growth

Faculty participation in entering SLO results has shown steady improvement across terms, demonstrating momentum toward full faculty engagement.



Participation increased from 47.1% in Fall 2024 to 57.5% in Spring 2025, supported by workshops, office hours, and department-level coaching.



Program-Level SLO Activity

SLO assessment activity varied across programs, with notable improvements from Fall 2024 to Spring 2025 in most areas.

94%

DSS Program

Highest participation rate in Spring 2025

62%

CTE Program

Significant improvement from 42% to 62%

57%

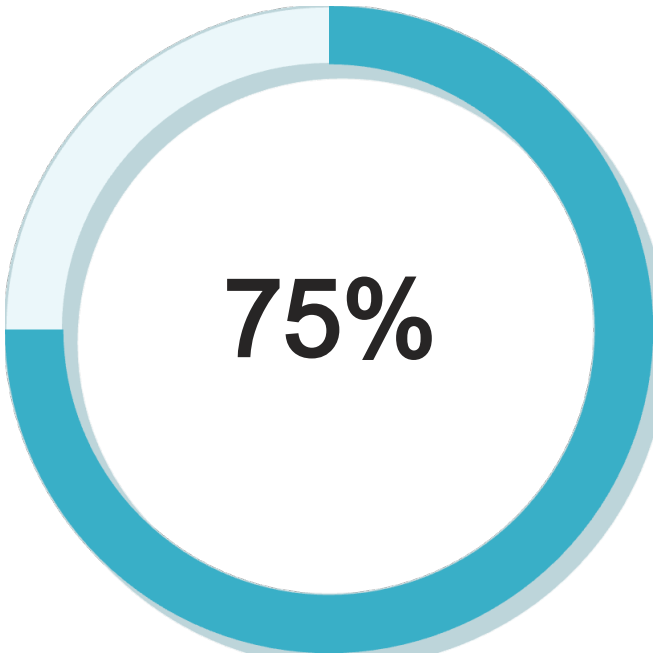
ESL Program

Steady growth from 52% participation

Programs shown here are just a snapshot. All programs contribute to SLO progress, and these three were selected to illustrate different types of improvement.

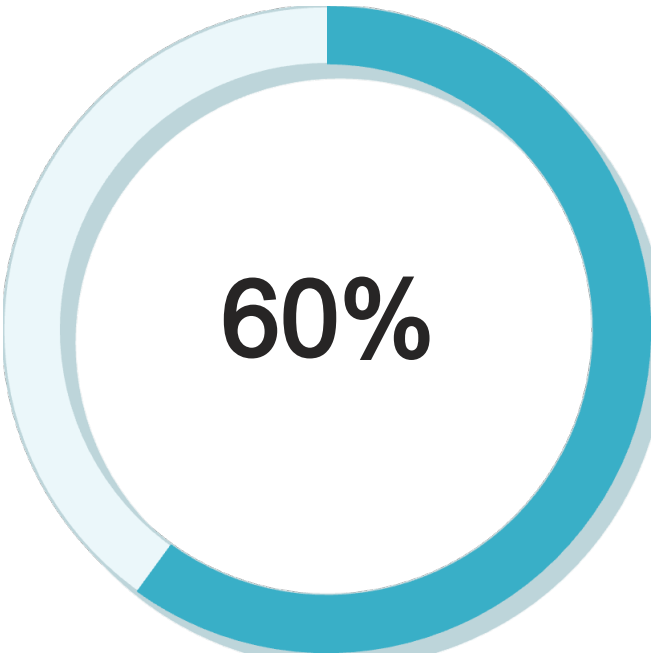
Assessment by Course Modality

SLO assessment participation improved across all course delivery modalities from Fall 2024 to Spring 2025.



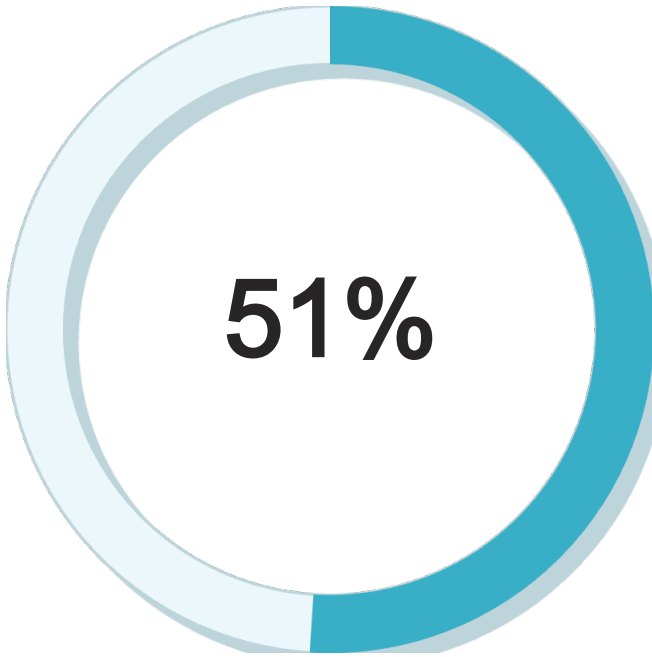
Mixed Format (Sync + Async)

Highest participation rate



Fully Online

Both asynchronous and synchronous

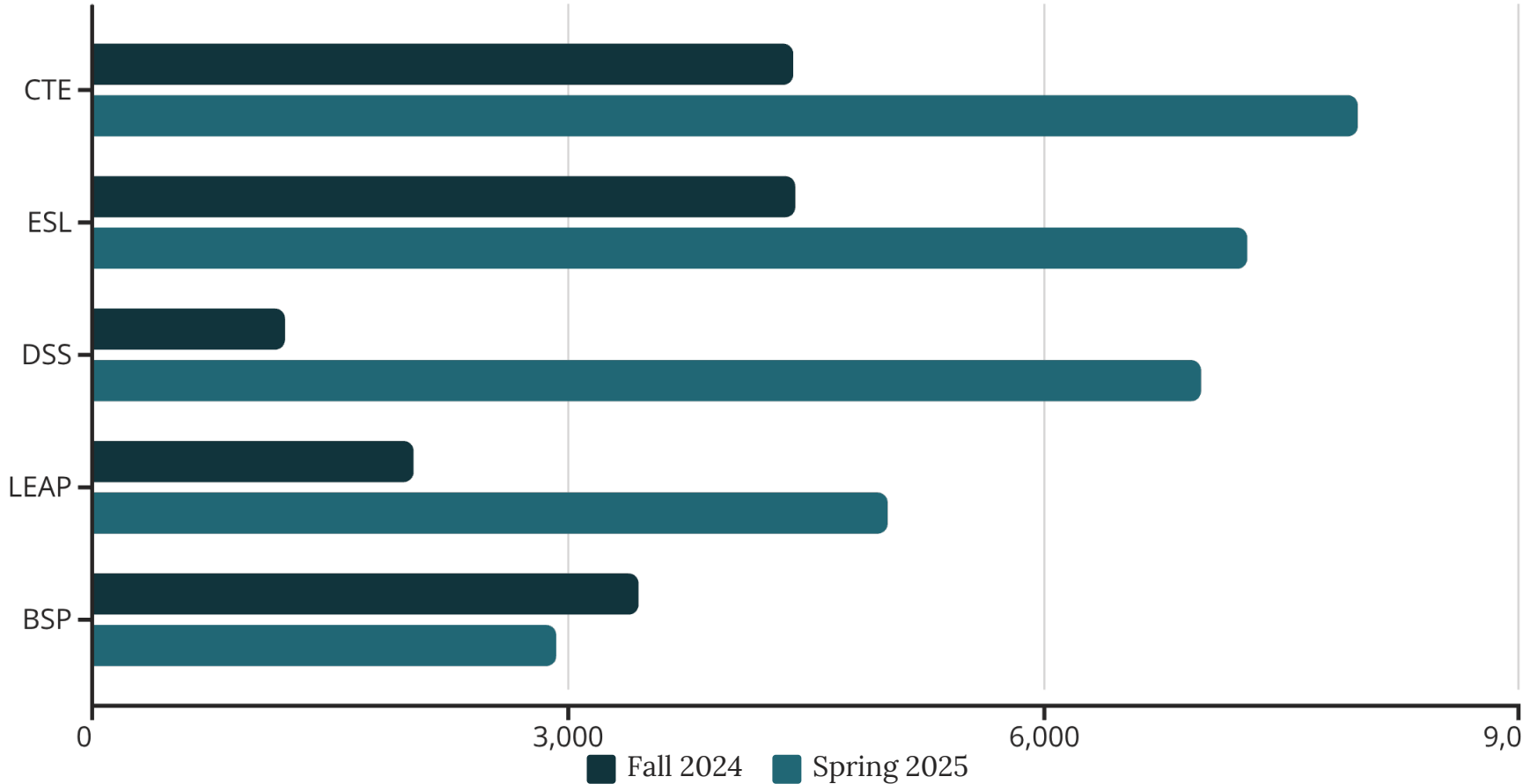


Fully In-Person

Improved from 40% participation

Student Assessment Volume

The total number of student assessments input to the Canvas Learning Mastery Gradebook nearly doubled from Fall 2024 to Spring 2025, reflecting increased faculty engagement.



Total assessments increased from 15,527 to 30,197 entries.

Data Quality Considerations

The report includes important notes about data interpretation to support faculty reflection and discussion.

Score 0 Designation

Indicates the outcome was aligned and scored, but the student did not demonstrate mastery.

This reflects performance data, not missing entry.

Registration Status

Open-entry/open-exit model means students may engage before/after registration status changes

Blank Scores

Indicates the outcome was aligned, but no score was entered.

This reflects missing data entry, not student performance.

Moving Forward Together

This report reflects the collective effort of faculty across programs to strengthen SLO assessment. Faculty engagement, collaboration, and persistence made it possible to establish a more consistent and transparent process using Canvas as the shared platform.

We recognize that assessment is occurring in classrooms across NOCE; what this report captures is the data that faculty entered into the Canvas Learning Mastery Gradebook.

Our next step is to ensure that the full scope of assessment is represented, not only what is tracked through this input tool.

01

Continue Faculty-Driven Progress

Build on the leadership and persistence demonstrated by faculty

02

Expand Assessment Representation

Ensure full scope of classroom assessment is captured

03

Enable Course-Level Data Views

Provide more complete picture of teaching and learning

Questions?

Visit our NOCE webpage for a link to our canvas hub with tutorials FAQ's a link to our office hour schedule and much more.

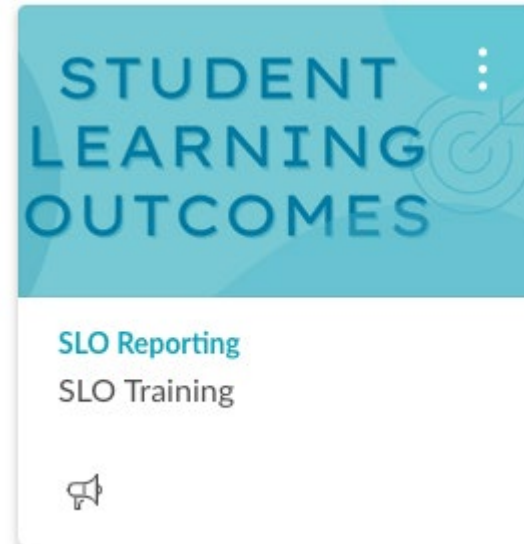
SLO Support Team

SLO Coordinator & SLO Program Leaders

Alli Stanojkovic (SLO Coordinator/DSS),
Dr. Kenny Yu (LEAP),
Candace Lynch (ESL),
Jennifer Carrey (HSD/BSP),
Jennifer Oo (CTE)

Email SLO@noce.edu and we will direct your question.

Scan the QR Code to be directed to the SLO Support hub.

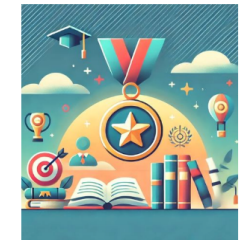


Self-Serve Canvas SLO Hub

Explore our newly updated Self-Serve Canvas SLO Hub, designed to support instructional faculty with step-by-step guides, video demonstrations, and FAQs.

Whether you're new to Student Learning Outcomes (SLO) assessment or need a quick refresher, this resource is available anytime to help streamline the process.

Access the [Canvas SLO Hub](#) by clicking this link (opens in a new tab) or using your Canvas Dashboard.



SLO Frequently Asked Questions (FAQ)

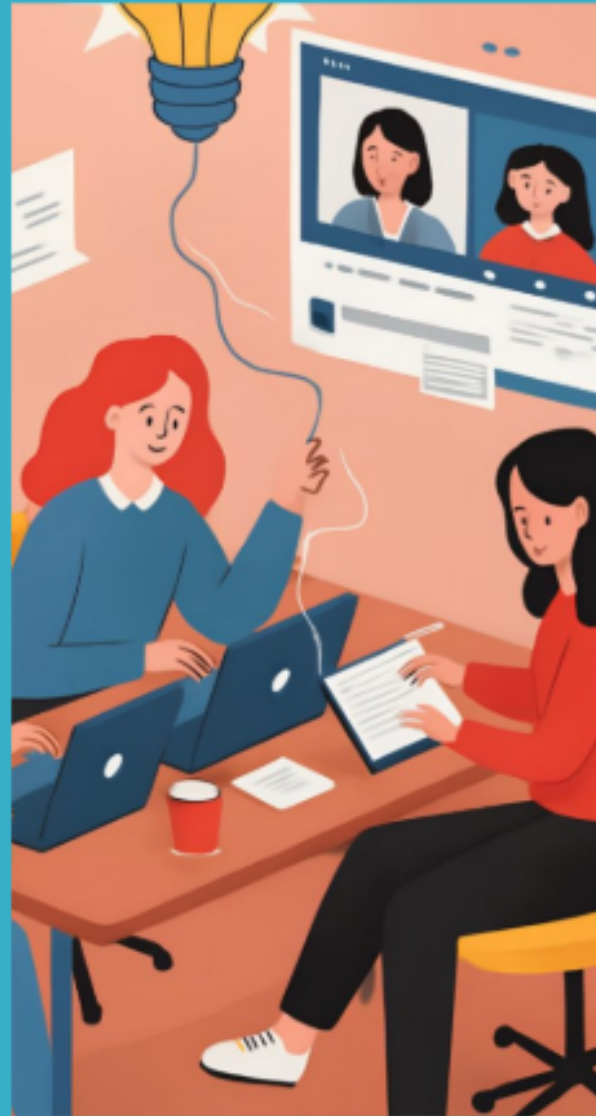
We understand there might be questions regarding the SLO process, its importance, and its implementation. Here's a compiled list of frequently asked questions to provide clarity. Here is the [PDF SLO FAQ version](#) if you wish to print this resource.

What is an SLO?	▼
Why is SLO assessment important?	▼
How do I assess an SLO?	▼
When should I assess an SLO?	▼
How do I interpret the SLO assessment data?	▼

SLO Input Session

Get It Done with Support

Need a little help wrapping up your SLO input for the term?



Join the SLO Team for a casual, hands-on SLO Input Session where you can get support while you enter data for your classes.

Date:
Thursday, October 23
Time: 3 p.m.

Location:
Anaheim Campus
or Zoom

Meeting ID: 843 0552 1294

Passcode: SLO

This is a Hi-Flex drop-in workshop — come in person or log in via Zoom and stay as long (or as short) as you like. There's no formal training and no recording — just real-time support from someone who gets it.

Whether you're finalizing entries or just want a quick check-in, the SLO Team is here to help!

NOCE
NORTH ORANGE
CONTINUING EDUCATION



Accredited by the
Western Association of Schools and Colleges
525 S. Bascom Blvd., Suite 200
Berkeley, CA 94702
Website: www.wasc.org

The North Orange Coast Community College District's (NOCCCD) North Orange Continuing Education Center is a provider of educational, employment, and business development services to which no person shall be unreasonably excluded on the basis of race, ethnicity, sex, gender, marital status, sexual orientation, gender identity or expression, physical or mental disability, or status as a victim of domestic violence. The District is also committed to maintaining a workplace free from harassment, drugs, and alcohol. To read the entire District's nondiscrimination statement, see the poster in the central information section in the back of the NOCCCD class schedule.