



California
Community
Colleges



CPL and Noncredit Learning

Mapping Articulated Pathways

With Credit for Prior Learning for Working Adults, Apprentices, & Veterans

Samuel Lee, Senior Advisor to the Chancellor for CPL & Chief Ambassador California MAP Initiative
Ginni May, Senior Advisor to the Chancellor

Made Possible By:

California Community College Chancellor's Office

Collaboration of the Academic Senate of the California Community Colleges

Funding sponsored by Assemblymember Sabrina Cervantes, District 58, and The California Latino Legislative Caucus

2023 Federal Omnibus Community Project Funding sponsored by U.S. Representative Ken Calvert, 41st District

Support from the Riverside Community College District and Norco College

What is CPL

CPL Types

- Industry Certification
- Military Training
- Credit By Exam
- Standardized Assessment
- Portfolio Review

CA Code of Regulations, Article 5

Alternative Methods for Awarding Credit

§55050 Credit for Prior Learning

§55051 High School Articulation

§55052 AP Examinations

§55052.5 IB and CLEP Examinations

Modes of Learning



Noncredit to Credit?

- Skills and Learning gained outside of the traditional higher education course structure may be recognized for credit based on the assessment of a qualified faculty member.
- For Noncredit, usually the assessment is conducted through an exam (credit by exam).
- Portfolio Review may also be used.
- Noncredit instruction that results in an industry recognized certification may be eligible for CPL.

Our Responsibilities

- **Working Adults:** Evaluate during the ed planning process all industry credentials or licenses for potential credit. T5 55050
- **Veterans:** Evaluate all Veteran and Service Member Joint Services Transcripts -- whether using GI Bill or not and offer all possible CPL to satisfy program of study requirements. T5 55050; US T38 Sections 21.4253 and 21.4254; SCO Handbook; CA Ed Code 66025.71
- **All CPL Eligible Students:**
 - Offer CPL before or when creating student ed plan T5 55050 (j)
 - Offer CPL for courses with content “similar to” prior learning T5 55050 (d)
 - Give opportunity to accept, deny, or appeal CPL T5 55050 (k)
 - Discuss transfer, financial aid, other implications of CPL
 - Report annually all CPL transcribed to the Chancellor’s Office, including qualitative data T5 55050 (l).

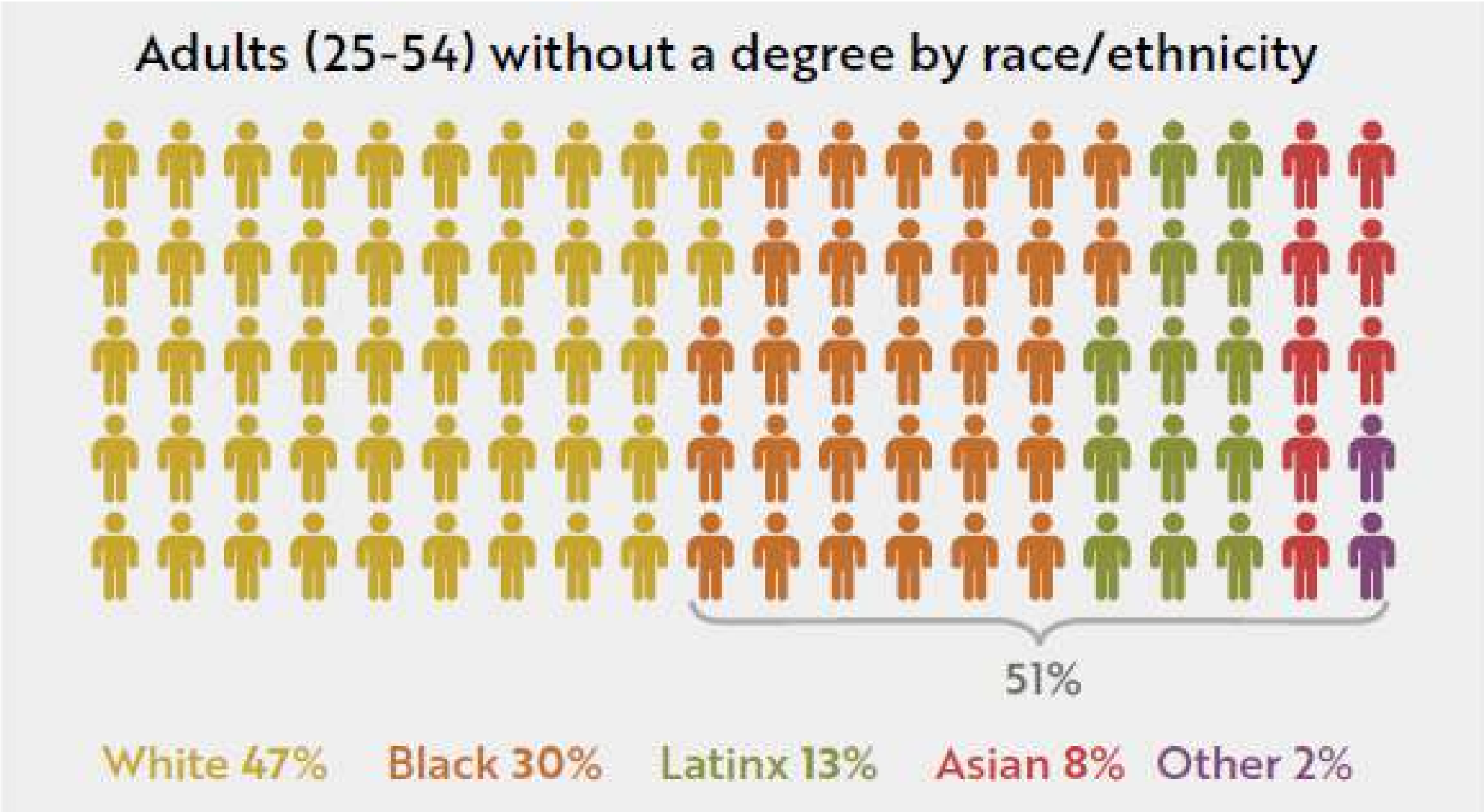
CPL Big Bump

- Completion bump with 15 CPL Units: **49%** vs. 27%
- Equity bump: **Latinx +24%, Black +14%**
- Reduced time to degree: **9-14** months
- Savings/Impact **\$121K** Veteran, **\$67K** Civilian
- Enrollment bump: **+17.5** units
- Boost in **Access**: Quick and affordable credentials
- Validation and Motivation (**1st Time College**)

College ~~Isn't~~ For Me...

By 2030, 6.8 million California working adults, apprentices, and veterans without degrees will have opportunities at all 116 CCC to convert their skills into college credit, accelerating certificate, AA, and BA completion, and unlocking new career opportunities.

CPL Closes Equity Gap



California Competes. (2020). *Credit for Prior Learning: Leveraging Past Learning to Close Present-Day Equity Gaps*. Figure 2 (p. 4). Based on NCES data for noncredit course completion. https://nces.ed.gov/datalab/index.aspx?ps_x=hgac21. Website: <https://californiacompetes.org/resources/credit-for-prior-learning-leveraging-past-learning-to-close-present-day-equity-gaps/>

Adult Learner Opportunity

- **69%** Degree or certificate would provide a very strong advantage.²⁶
- **84%** CPL would strongly influence choice of college or university.²⁷
- **11% or fewer receive CPL.**²⁸

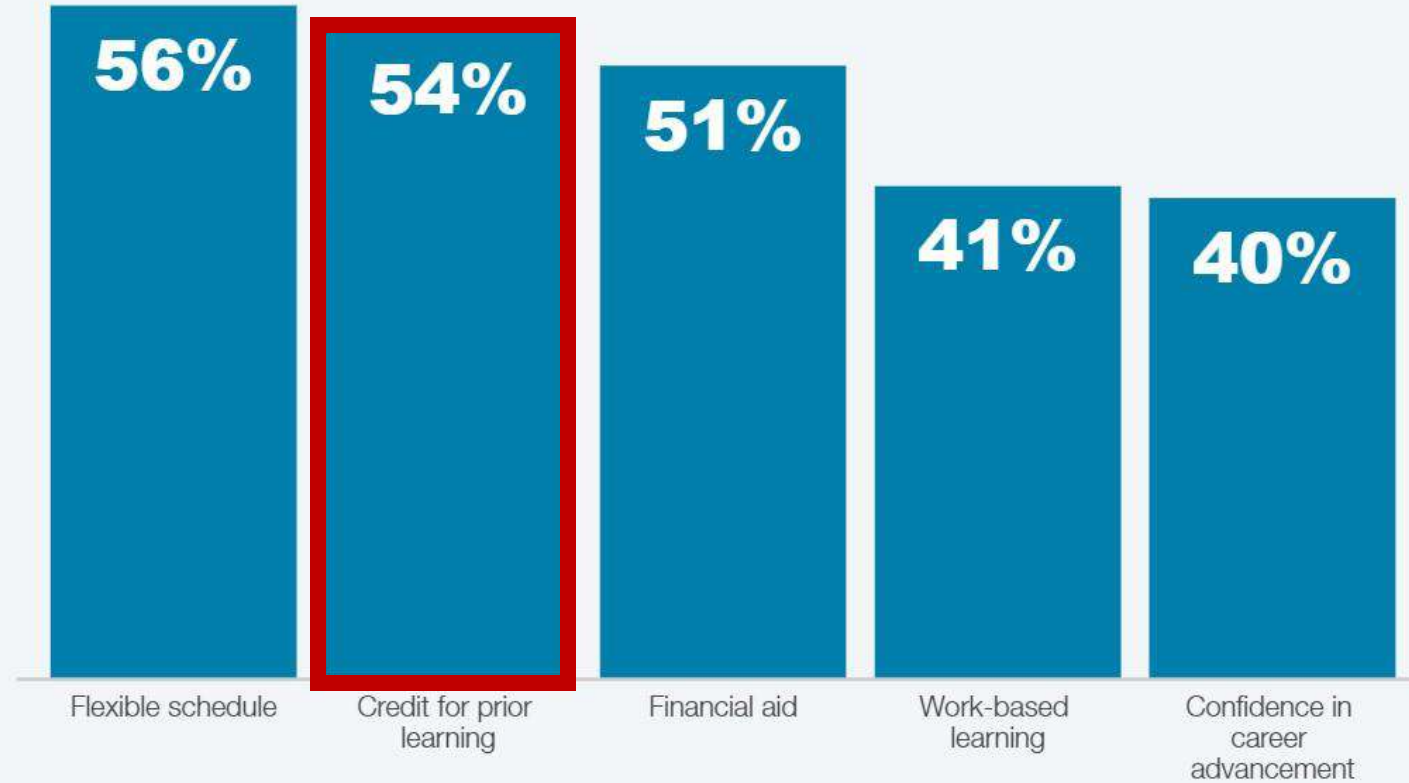
²⁶Strada Education Network, Public Viewpoint, *COVID-19 Work and Education Survey*, accessed July 31, 2022, <https://www.stradaeducation.org/publicviewpoint/>

²⁷Strada Education Network, Public Viewpoint. (2020). *Interested but not Enrolled: Understanding and Serving Aspiring Adult Learners*. Website: <https://stradaeducation.org/report/pv-release-september-16-2020/>

²⁸Klein-Collins, R, Framularo, C. (2022). *Attracting adult learners with credit for prior learning*, Council for Adult and Experiential Learning and Strada Education Network, Indianapolis. Retrieved July 26, 2022. Website: <https://www.cael.org/news-and-resources/attracting-adult-learners-with-credit-for-prior-learning>

Outreach Tool

Figure 9: Factors most likely to increase the probability of enrollment
Percent who said the factor would make them 'extremely' or 'very' likely to enroll.



Source: Strada Recontact Survey Spring 2022. **Base:** Adults ages 18-65 with an associate degree or less and not currently enrolled, n=1,387.

15 CPL Units & Completion

Value of 15 Units CPL leading to College Credential & Career Attainment	Working Adults & Apprentices 6,800,000		Veterans 436,000		Total
	1	Enroll w/CPL	1	Enroll w/CPL	Enroll Goal
		220,000		30,000	250,000
PF & Savings	\$14.65K	\$3.2B	\$26.12K	\$439.6M	\$3.7B
20-Year Impact	\$115.0K	\$25.3B	\$135.0K	\$3.5B	\$28.8B
Combined	\$129.7K	\$28.5B	\$161.1K	\$3.9B	\$32.4B

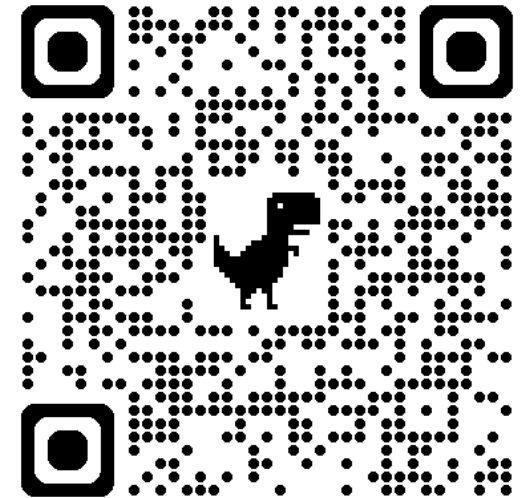
Goal 1

Expand CPL Opportunities for at least 250,000 Californians, including 220,000 working adults and apprentices, and 30,000 veterans. Offer or award CPL using 1,000 statewide credit recommendations from 25 faculty/industry workgroups. Achieve 80% of CPL recipients reporting improvements in savings, belonging, well-being, completion, and career prospects, evidenced by data including 500 personal success stories documented in MAP.

Stretch Goal: *Serve 500,000, including 450,000 working adults and 50,000 veterans, utilizing 3,000 credit recommendations from 40 workgroups, with 90% reporting improvements across 1,000 success stories.*

CPL Opportunities & Partnerships

1. Offer noncredit courses that mirror credit courses but use credit by exam to qualify for CPL at the partner college
2. Screen incoming students for industry certifications and let them know what they qualify for at their partner colleges
3. Learn about existing articulations at partner colleges and configure noncredit courses to align
4. Offer courses that culminate in industry certifications, which qualify for CPL at partner colleges
5. Offer noncredit portfolio development courses designed to qualify students for CPL at partner colleges (to encourage matriculation to targeted programs)



<https://mapcplarticulations.azurewebsites.net/>

CPL Landing Page



<https://www.wlac.edu>

wl@wl.edu

Contact a CPL Counselor

Upload your Joint Services Transcript

CCCApply

FAFSA Application

Approved Opportunities

Filter...

Adult School Dental Assisting

Basic Life Support (BLS) Certification

CA EMT Credit by Exam

CA Real Estate Broker

California Emergency Medical Technician

California Paramedic /

Credit for Prior Learning

Eligible Courses

Search by keyword...

Export to Excel

ALD HTH 021 : BASIC LIFE SUPPORT FOR THE HEALTHCARE PROVIDER

Credits : 0.5

CPL Eligible Qualifications

Basic Life Support (BLS) Certification
CA EMT Credit by Exam
California Emergency Medical Technician
California Paramedic / Paramedicine
Dental Board of California (DBC) Certificates

Required Evidence:

Certificate
Exam Scores
License

ALD HTH 043CO : ANATOMY AND PHYSIOLOGY FOR EMERGENCY HEALTH CARE PERSONNEL

Credits : 4.0

CPL Eligible Qualifications

California Paramedic / Paramedicine
Paramedicine Credit by Exam

Required Evidence:

Certificate
Exam Scores
License

ALD HTH 044CO : INTRODUCTION TO EMERGENCY MEDICAL SERVICE SYSTEMS

Credits : 2.0

CPL Eligible Qualifications

California Paramedic / Paramedicine
Paramedicine Credit by Exam

Required Evidence:

Certificate
Exam Scores
License

ALD HTH 045CO : PATIENT ASSESSMENT AND AIRWAY MANAGEMENT

Credits : 2.0

CPL Eligible Qualifications

California Paramedic / Paramedicine
Paramedicine Credit by Exam

Required Evidence:

Certificate
Exam Scores
License

ALD HTH 046CO : CARDIOLOGY ASSESSMENT AND MEDICAL EMERGENCIES

Credits : 6.0

CPL Eligible Qualifications

California Paramedic / Paramedicine
Paramedicine Credit by Exam

Required Evidence:

Certificate
Exam Scores
License

ALD HTH 047CO : EMERGENCY RESPONSE TO CRISIS

Credits : 4.0

CPL Eligible Qualifications

California Paramedic / Paramedicine
Paramedicine Credit by Exam

Required Evidence:

Certificate
Exam Scores
License

ALD HTH 048CO : MEDICAL EMERGENCIES AND PHARMACOLOGICAL INTERVENTIONS

Credits : 5.0

CPL Eligible Qualifications

California Paramedic / Paramedicine
Paramedicine Credit by Exam

Required Evidence:

Certificate
Exam Scores
License

ALD HTH 049CO : CLINICAL INTERNSHIP

Credits : 4.0

CPL Eligible Qualifications

California Paramedic / Paramedicine
Paramedicine Credit by Exam

Required Evidence:

Certificate
Exam Scores
License



CPL Inventory and Impact



	Savings & PoF	20-Year Impact	Combined	Students	Eligible CPL*	Avg
ALL COLLEGES	\$24,531,277	\$152,774,684	\$177,305,961	8,831	36,366	4.1
San Diego City College	\$2,733,995	\$21,419,815	\$24,153,809	1,796	5,585	3.1
Palomar College	\$3,753,809	\$19,410,333	\$23,164,142	1,388	4,314	3.1
Moreno Valley College	\$3,156,463	\$16,981,832	\$20,138,295	529	3,477	6.6
San Diego Mesa College	\$2,237,418	\$17,354,652	\$19,592,070	1,562	4,512	2.9
Norco College	\$2,820,880	\$16,414,162	\$19,235,042	413	4,141	10.0
West Los Angeles College	\$2,167,542	\$16,955,485	\$19,123,027	373	4,115	11.0

Beacon Economics (June 2024). *Expected Economic Benefits from Credit for Prior Learning in California.*

Website: <https://map.rccd.edu/wp-content/uploads/2024/07/Expected-Economic-Benefits-of-CPL-in-California.pdf>

CPL Process with MAP

Rochelle's Journey



Discovering CPL



Getting Started



Education Planning



Awarding CPL



Program Completion



Career Attainment





Real Estate?

Get up to 12 units of credit with a CA Real Estate Sales License and/or CA Real Estate Broker License toward:

**Real Estate Appraiser II or III
Real Estate Associate of Arts**

Possible Units Earned

CCC Course	Units
REAL ES-001 Real Estate Principles	3
REAL ES-003 Real Estate Practices	3
REAL ES-005 Legal Aspects of Real Estate	3
REAL ES-007 Real Estate Finance	3
REAL ES-009 Real Estate Appraisal I	3

General Education (GE)

Needed for Associate Degree

- **Area 1:** English Composition, Oral Communication and Critical Thinking | **7-8 units**
- **Area 2:** Mathematical Concepts and Quantitative Reasoning | **3-4 units**
- **Area 3:** Arts and Humanities | **3-5 units**
- **Area 4:** Social and Behavioral Sciences | **3 units**
- **Area 5:** Natural Sciences | **3-5 units**
- **Area 6:** Ethnic Studies | **3 units**
- **Area 7:** Lifelong Learning, Self Development | **3-4 units**

See what credit for prior learning you may be eligible for!

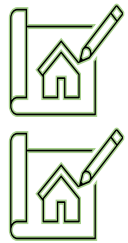


For More Information



CPL@CaliforniaMAPInitiative.edu

Outreach & CPL Discovery



MAP Outreach Templates



College Customizable Webpages



Program Pathways Mapper

Discovering CPL



Getting Started



Education Planning



Awarding CPL



Program Completion



Career Attainment



College-Branded Website



<https://www.wlac.edu>

wl@wl.edu

Contact a CPL Counselor

Upload your Joint Services Transcript

CCCApply

FAFSA Application

Approved Opportunities

Filter...

Adult School Dental Assisting

Basic Life Support (BLS) Certification

CA EMT Credit by Exam

CA Real Estate Broker

California Emergency Medical Technician

Credit for Prior Learning

Eligible Courses

Search by keyword...

Export to Excel

ALD HTH 021 : BASIC LIFE SUPPORT FOR THE HEALTHCARE PROVIDER

Credits : 0.5

CPL Eligible Qualifications

Basic Life Support (BLS) Certification
CA EMT Credit by Exam
California Emergency Medical Technician
California Paramedic / Paramedicine
Dental Board of California (DBC) Certificates

Required Evidence:

Certificate
Exam Scores
License

ALD HTH 043CO : ANATOMY AND PHYSIOLOGY FOR EMERGENCY HEALTH CARE PERSONNEL

Credits : 4.0

CPL Eligible Qualifications

California Paramedic / Paramedicine
Paramedicine Credit by Exam

Required Evidence:

Certificate
Exam Scores
License

ALD HTH 044CO : INTRODUCTION TO EMERGENCY MEDICAL SERVICE SYSTEMS

Credits : 2.0

CPL Eligible Qualifications

California Paramedic / Paramedicine
Paramedicine Credit by Exam

Required Evidence:

Certificate
Exam Scores
License

ALD HTH 045CO : PATIENT ASSESSMENT AND AIRWAY MANAGEMENT

Credits : 2.0

CPL Eligible Qualifications

California Paramedic / Paramedicine
Paramedicine Credit by Exam

Required Evidence:

Certificate
Exam Scores
License

ALD HTH 046CO : CARDIOLOGY ASSESSMENT AND MEDICAL EMERGENCIES

Credits : 6.0

CPL Eligible Qualifications

California Paramedic / Paramedicine
Paramedicine Credit by Exam

Required Evidence:

Certificate
Exam Scores
License

ALD HTH 047CO : EMERGENCY RESPONSE TO CRISIS

Credits : 4.0

CPL Eligible Qualifications

California Paramedic / Paramedicine
Paramedicine Credit by Exam

Required Evidence:

Certificate
Exam Scores
License

ALD HTH 048CO : MEDICAL EMERGENCIES AND PHARMACOLOGICAL INTERVENTIONS

Credits : 5.0

CPL Eligible Qualifications

California Paramedic / Paramedicine
Paramedicine Credit by Exam

Required Evidence:

Certificate
Exam Scores
License

ALD HTH 049CO : CLINICAL INTERNSHIP

Credits : 4.0

CPL Eligible Qualifications

California Paramedic / Paramedicine
Paramedicine Credit by Exam

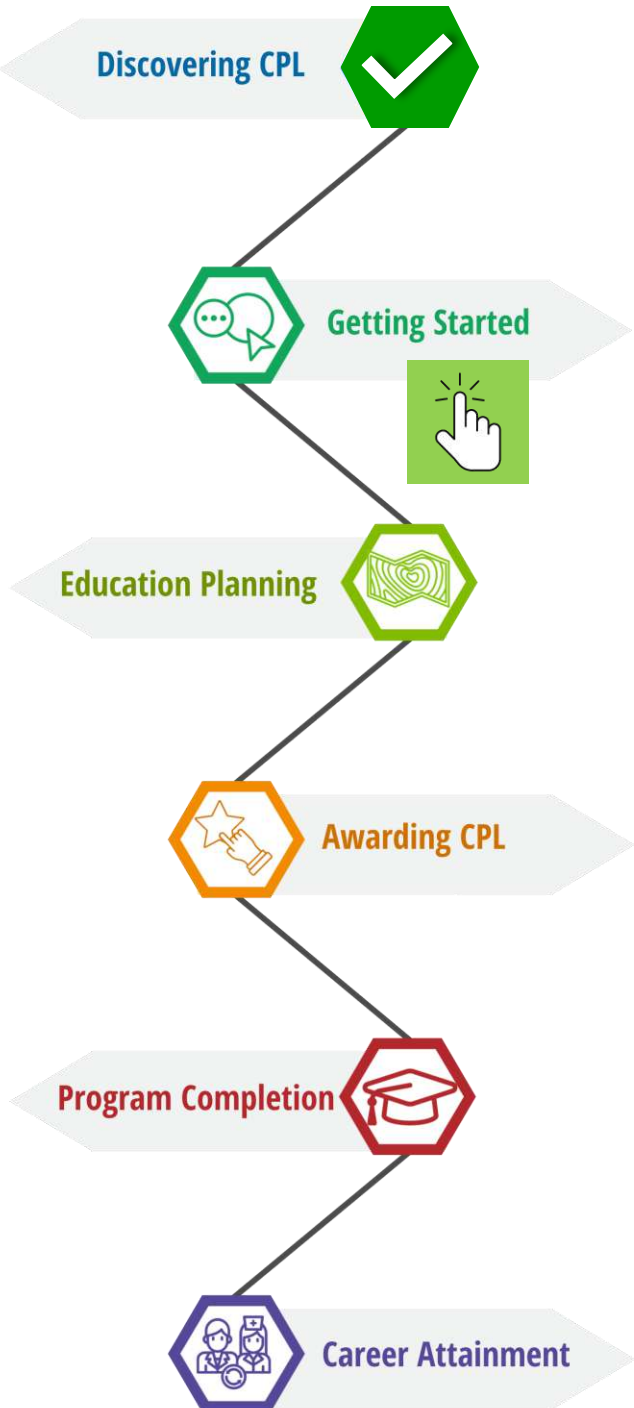
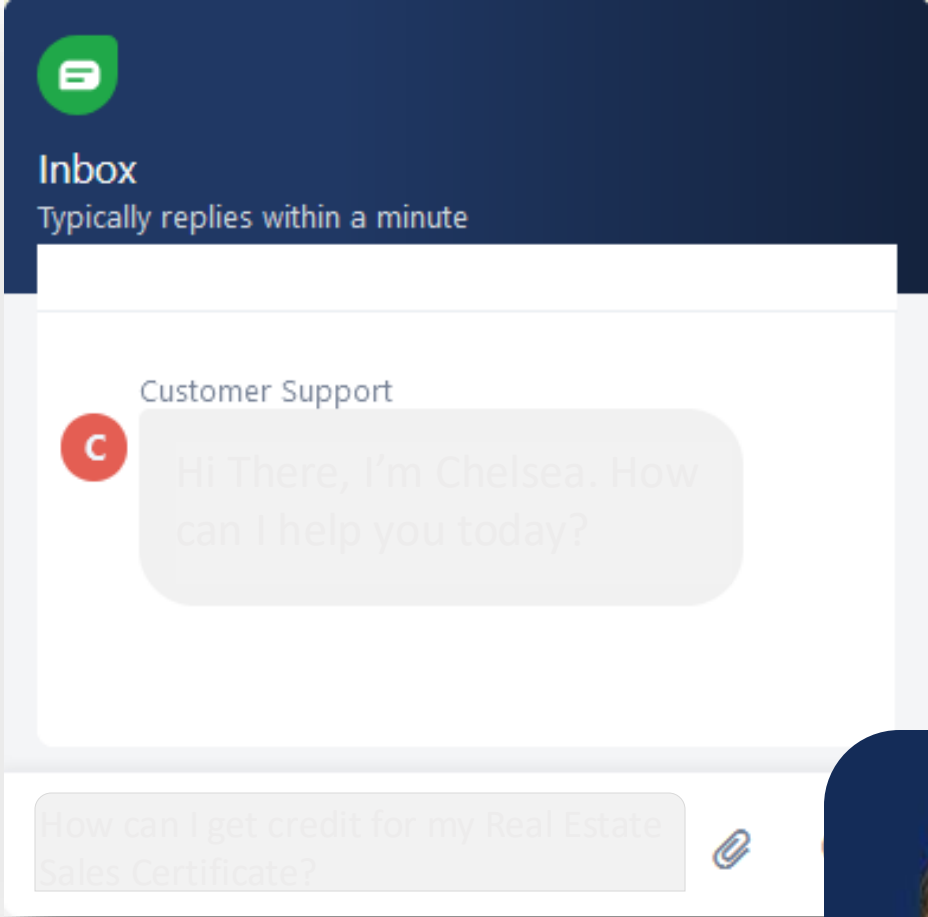
Required Evidence:

Certificate
Exam Scores
License

C
C
P
C
E
C
A
F
C



Getting Started



Getting Started

- CCCApply and College Admission
- MAP Support Creates Student Profile
- MAP Support Connects CPL Coordinator with Student
- CPL Coordinator or Counselor Follow-Up with Student

Discovering CPL



Getting Started



Education Planning



Awarding CPL



Program Completion



Career Attainment



Public Upload	CPL Plan	Edit	Student ID	Last Name	First Name	CPL Type	Learning Mode	Potential Credits	Credits in Review	Applied Credits	Transcribed Credits	Email	Branch	CPL Docs	EdPlan	Analysis	Counselor	Student	Transcribed	Date Added
			73206	Jackson	Rochelle	IC	I	18.0	0.0	0.0		rochelle.jackson@wlaac.edu	Non-Military	✓	✓	✓	✓	✓	✓	07/30/2024



CPL Counseling & Ed Plans

Discovering CPL 

Getting Started 

Education Planning 

Awarding CPL 

Program Completion 

Career Attainment 

Program of Study: _____
Ed Goal: _____
Catalog Year: _____

Sample

Student Educational Plan
A.S. Degree: Career and Technical Programs

Basic Skills Competency		
	Completed	Needed
Math		
Reading		

Name _____ ID # _____

Educational Goal Change Major Change

Major _____

Athletics VA F.AID EOPS DSPS OTHER

Previous Colleges Attended: _____ Units: **CPL (Outside Learning/Experience)**

Cumulative Units Completed: _____ G.P.A. _____

Degree Units Completed: _____ G.P.A. _____

VA Usable Units: _____ VA Elective Units Available: _____

GENERAL EDUCATION REQUIREMENTS	Units Completed	Units in Progress	Units Needed	CAREER & TECHNICAL PROG	Units Completed	Units in Progress	Units Needed
A. Natural Sciences (3 units) Anthropology 1 or 1H; Astronomy 1A,1B; Biology 1 or 1H, 2,2A, 2B,3,4,5,6,7,8,9,10,14,15,16,18,19,20,31A,31B,31C,31D,31E,40,45, 50A,50B,55,60/60H,61,85; Chemistry 1A or 1AH,1B or 1BH,2A, 2B,3,10,12A,12B,17; Geography 1 or 1H,1L,5; Geology 2,3,4,5,30A,30B,31,32; Oceanography 1,1/1L; Physical S							

I have prior knowledge of college level material through training, experience, or independent study and believe I may be able to test out of a course. Examples: knowledge to test out of Spanish 1, training to test out of Introduction to Computer Information Systems, etc.*

- Yes
- No
- I am not sure



Canvas
Integration for
Credit by Exam

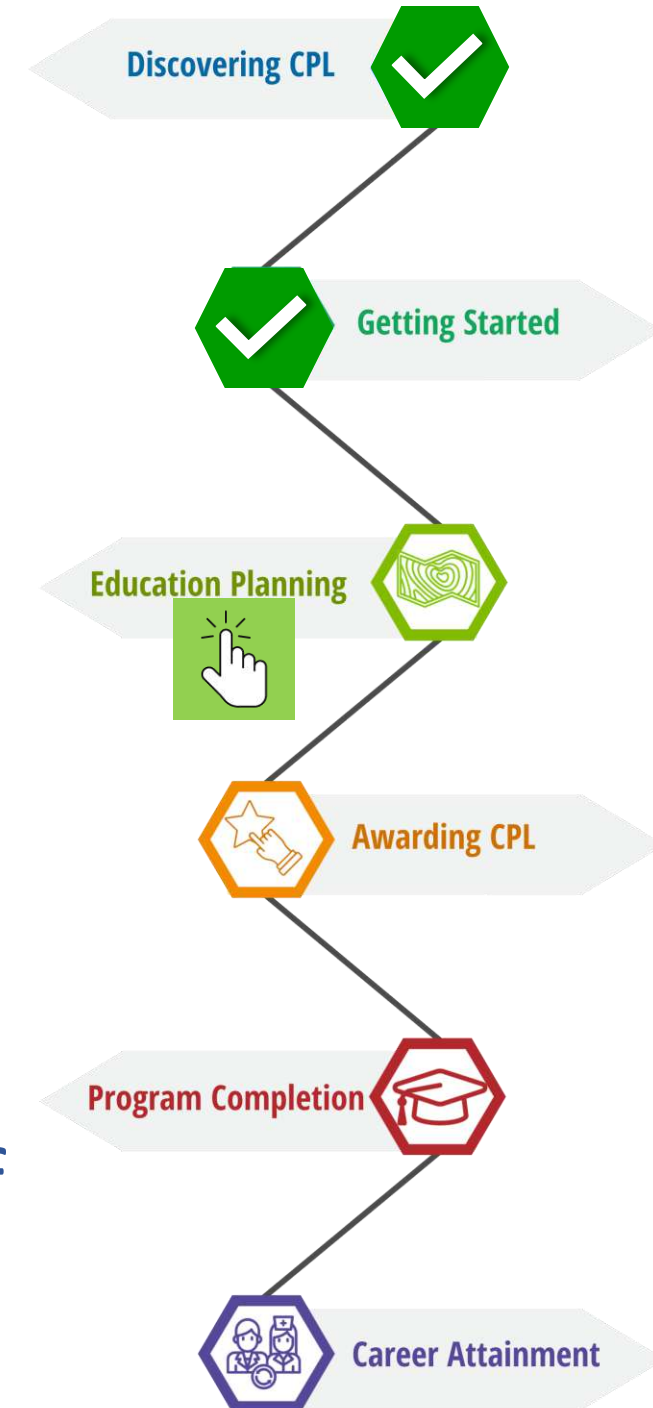


CPL Counseling & Ed Plans

Rochelle and counselor explore possible CPL

- 15 units from Real Estate Broker's License and Salesperson License
 - REAL ES 001, 003, 005, 007, 009
- 5 units from credit by exam
 - SPAN 035

After careful consideration, Rochelle decides she would like to pursue all 20 credit units of CPL



CPL Counseling & Ed Plans

Student CPL Status

1. CPL Docs Verified	2. ED. Plan Created	3. Analysis Completed	4. Counselor Verified	5. Student Verified	6. Transcribed
✓	✓	✓	✓	✓	✓

Student Information

First Name: Rochelle	ID #: 73206	CPL Type: Industry Certificatio ...	Program of Study: Real Estate - AA - 0 ...
Last Name: Jackson	Phone: 310-123-4567	Learning Mode: Industry training (I)	Program Goals: CSU
Email: rochelle.jackson@wlac.edu	Branch: Non-Military	Transfer Destination: CSUN	

Documents (JST, Ed Plan, Cert, Portfolio, Etc.):

- ✓ Rochelle_RE Broker.pdf License
- ✓ Rochelle_EdPlan.pdf Ed. Plan

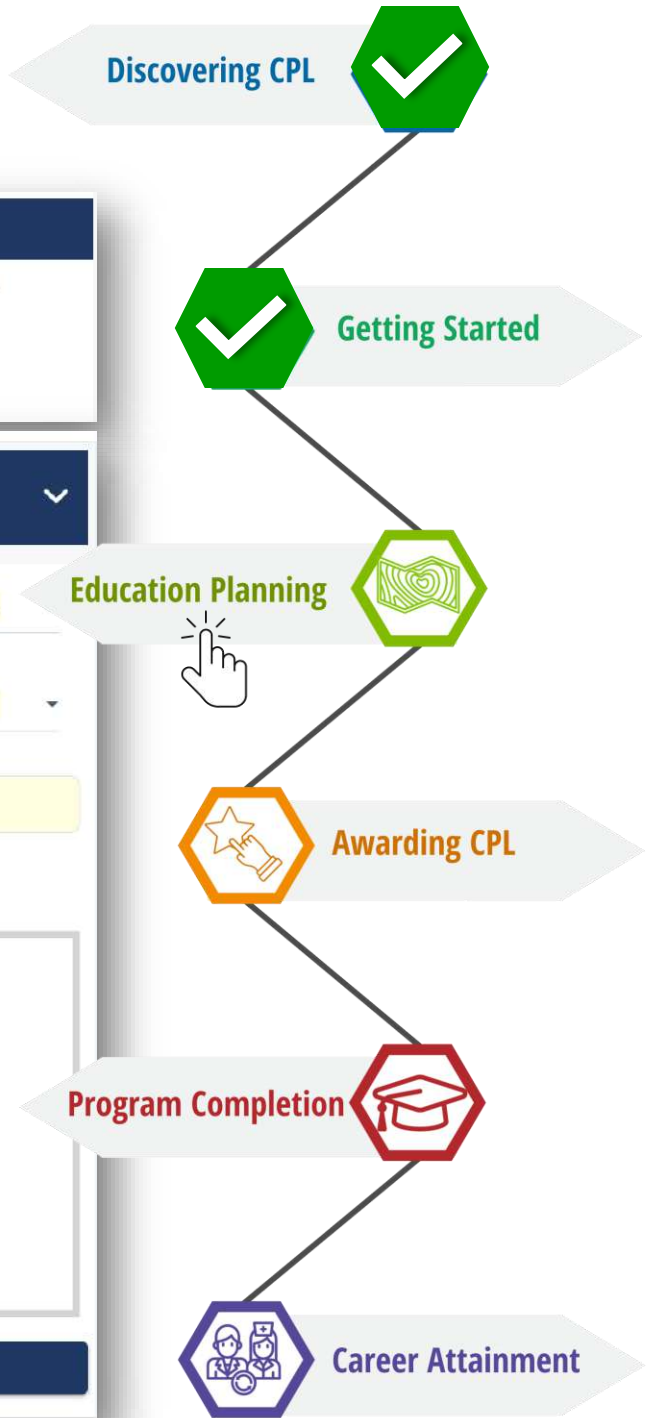
UPLOAD

Note Concerning Student Plan :
Example: Student requested appeal the decision to set the credit recommendation for 3 Hours Communication, which was listed as Not Applicable. Student is seeking course credit.

Notifications :

Opt Out

SAVE



CPL Counseling & Ed Plans

Discovering CPL



Getting Started



Education Planning



Awarding CPL



Program Completion



Career Attainment



Eligible Credits

Below are the credits for which the student is eligible. Some may already be articulated. For those that need an articulation click on action and choose the appropriate option.

VIEW CPL PLAN VIEW JST ADD/REMOVE ACE CREDIT RECOMMENDATION ADD/REMOVE MAP EXHIBIT CREATE NEW MAP EXHIBIT REFRESH

ACTION	STATUS	CREDIT RECOMMENDATIONS (Units)	COLLEGE COURSE	EXHIBIT	POTENTIAL CREDITS	CREDITS IN REVIEW	APPLIED CREDITS	TRANSCRIBED CREDITS	CPL PLAN STATUS
ACTION ▾	Implementation	3 hours in LEGAL ASPECTS OF REAL ESTATE I	REAL ES-005 LEGAL ASPECTS OF REAL ESTATE I(3)	MAPICI-CREB-1-001	3.0	0.0	3.0	0.0	✓
ACTION ▾	Implementation	3 hours in REAL ESTATE FINANCE I	REAL ES-007 REAL ESTATE FINANCE I(3)	MAPICI-CREB-1-001	3.0	0.0	3.0	0.0	✓
ACTION ▾	Implementation	3 hours in REAL ESTATE APPRAISAL I	REAL ES-009 REAL ESTATE APPRAISAL I(3)	MAPICI-CREB-1-001	3.0	0.0	3.0	0.0	✓
ACTION ▾	Implementation	3 hours in REAL ESTATE PRINCIPLES	REAL ES-001 REAL ESTATE PRINCIPLES(3)	MAPICI-CRES-1-001	3.0	0.0	3.0	0.0	✓
ACTION ▾	Implementation	3 hours in REAL ESTATE PRACTICES	REAL ES-003 REAL ESTATE PRACTICES(3)	MAPICI-CRES-1-001	3.0	0.0	3.0	0.0	✓
ACTION ▾		5 hours in Spanish For Spanish Speakers I		MAPCBES-SFSS-1-001	5.0	0.0	0.0	0.0	?
<p>ACTION</p> <ul style="list-style-type: none"> Articulate as Course Articulate as Area Articulate as Elective 					POTENTIAL CREDITS	CREDITS IN REVIEW	APPLIED CREDITS	TRANSCRIBED CREDITS	0.0
					23.0	0.0	15.0	0.0	

CPL Counseling & Ed Plans

Discovering CPL



Getting Started



Education Planning



Awarding CPL



Program Completion



Career Attainment



Dear Aaron Benitez,

The articulation recommendation(s) below were submitted for your consideration

Please determine if the course matches the credit recommendation(s) listed within the exhibit(s).

Approve

Deny

SPANISH 035 Spanish For Spanish Speakers I

5 hours in Spanish For Spanish Speakers I

[View Details](#)

Message from Sender:

Please review articulation package

Course : SPANISH 035 - Spanish For Spanish Speakers I - Units : 5.0

Credit Recommendation : 5 hours in

Spanish Speakers I

Documents (JST, Ed Plan, Cert, Portfolio, Etc.) :

✓ Rochelle_CBESPAN.jpg   Exam Scores

✓ Rochelle_RE Broker.pdf   License

✓ Rochelle_EdPlan.pdf   Ed. Plan

UPLOAD

Offering, Accepting, Transcribing, Storing Credit

Rochelle Jackson's CPL Plan

Student Information

First Name	Last Name	Email	ID#	Phone	College
Rochelle	Jackson	rochelle.jackson@wlac.edu	73206	310-123-4567	WEST LOS ANGELES COLLEGE

CPL Type	Learning Mode	Branch	Program of Study	Program Goals
Credit By Exam, Industry Certification	Industry training (I), Self-study, exam preparation, other (S)	Non-Military	Real Estate	CSU

Transfer Destination	Uploaded Documents	Notes Concerning Student Plan
CSUN	License, Ed. Plan	

Student CPL Status

1. CPL Docs Verified	2. ED Plan Created	3. Analysis Completed	4. Counselor Verified	5. Student Verified	6. Transcribed
Natalie Powell, 08/02/2024	Natalie Powell, 08/02/2024	Natalie Powell, 08/02/2024	Natalie Powell, 08/02/2024		

Applied MAP Credits

Credits	Type	College Course	Credit Recommendations	Exhibit ID	Version	Status
3	Course credit (1)	REAL ES-003 REAL ESTATE PRACTICES(3)	3 hours in REAL ESTATE PRACTICES	MAPICI-CREB-1-001	1	Applied
3	Course credit (1)	REAL ES-005 LEGAL ASPECTS OF REAL ESTATE I(3)	3 hours in LEGAL ASPECTS OF REAL ESTATE I	MAPICI-CREB-1-001	1	Applied
3	Course credit (1)	REAL ES-007 REAL ESTATE FINANCE I(3)	3 hours in REAL ESTATE FINANCE I	MAPICI-CREB-1-001	1	Applied
3	Course credit (1)	REAL ES-009 REAL ESTATE APPRAISAL I(3)	3 hours in REAL ESTATE APPRAISAL I	MAPICI-CREB-1-001	1	Applied
5	Course credit (1)	SPANISH-035 Spanish For Spanish Speakers I(5)	5 hours in Spanish For Spanish Speakers I	MAPCBES-SFSS-1-001	1	Applied
3	Course credit (1)	REAL ES-001 REAL ESTATE PRINCIPLES(3)	3 hours in REAL ESTATE PRINCIPLES	MAPICI-CRES-1-001	1	Applied



Push Final Credits to SIS



Interactive Student CPL Plan



Credential Registry Stores Docs

Discovering CPL



Getting Started



Education Planning



Awarding CPL



Program Completion



Career Attainment



Transcribing

Course	Course Title	Grade	Note	GPA Units Attempted	Units Completed	Grade Points	G.P.A.
Fall 2024							
REAL-ES 01	Real Estate Principles	CR	PL-I	(3.00)	3.00	0.00	
REAL-ES 03	Real Estate Practice	CR	PL-I	(3.00)	3.00	0.00	
REAL-ES 05	Legal Aspects of Real Estate	CR	PL-I	(3.00)	3.00	0.00	
REAL-ES 01	Real Estate Finance	CR	PL-I	(3.00)	3.00	0.00	
REAL-ES 09	Real Estate Appraisal I	CR	PL-I	(3.00)	3.00	0.00	
SPAN 035	Spanish for Spanish Speakers I	A	PL-E	(5.00)	5.00	5.00	

Discovering CPL



Getting Started



Education Planning



Awarding CPL



Program Completion



Career Attainment



Push Final Credits to SIS



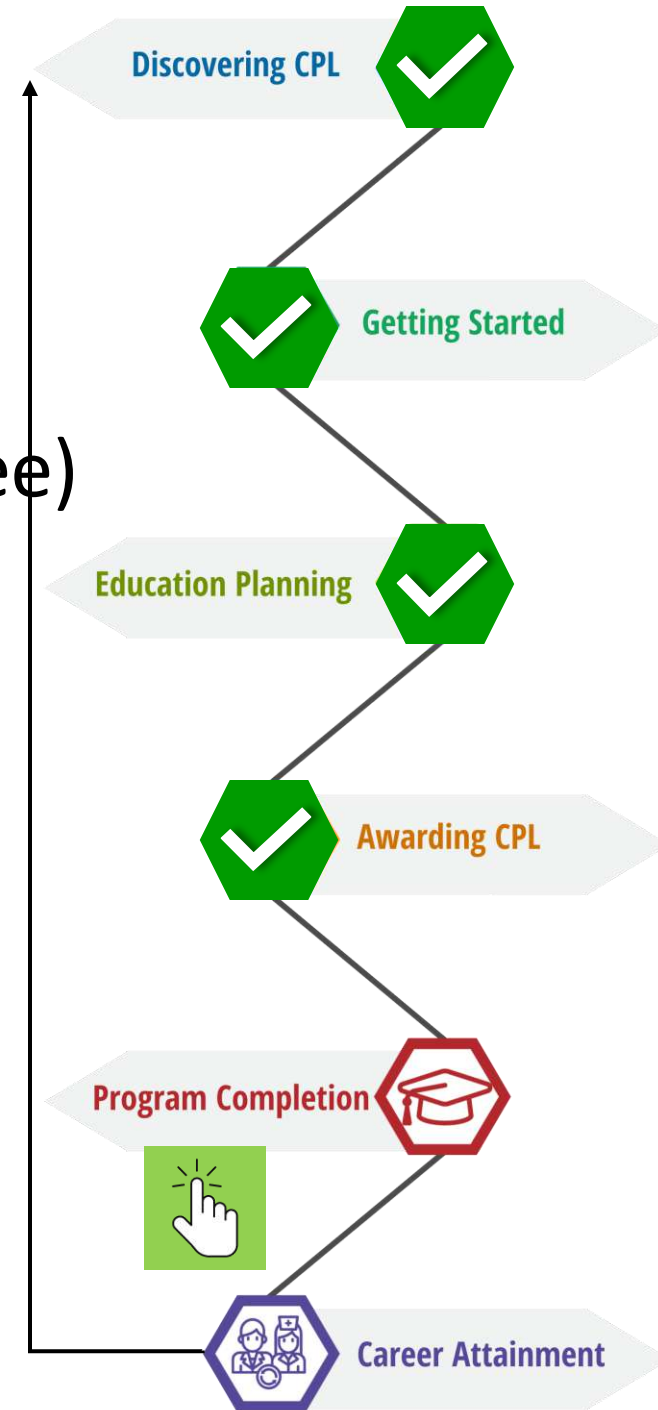
CPL Standard Notations



Data Standards

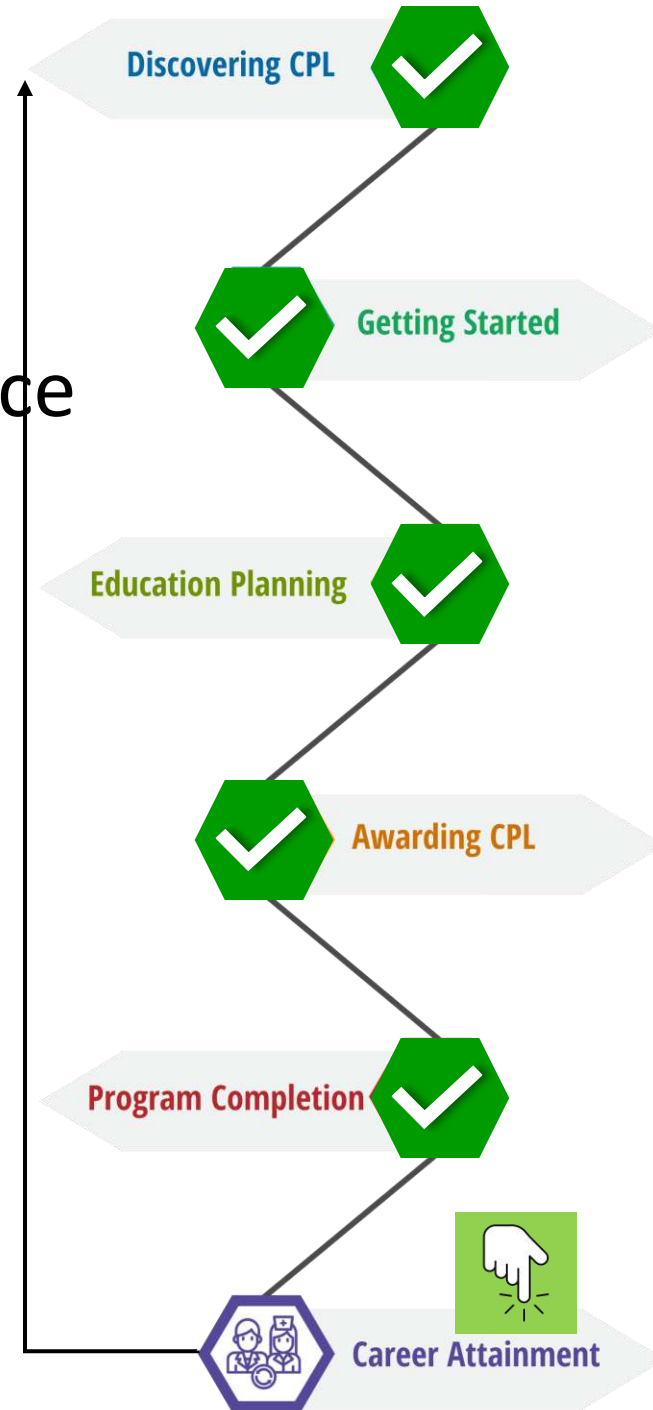
Program Completion

- Real Estate Appraiser III (12-unit skill award)
- Real Estate Appraiser II (47-unit certificate)
- Real Estate Associate of Arts (60-units AA degree)
- Future Goal of CSU Transfer
- 2+2 Pathway in Business Available?



Career Attainment

- Career attainment while at school
 - Skill Award – Position at the Tax Assessors Office
- Promotional opportunities
 - Milestones - Certificate, AA Degree
 - Bilingual Pay Differential
- Continued Learning and CPL

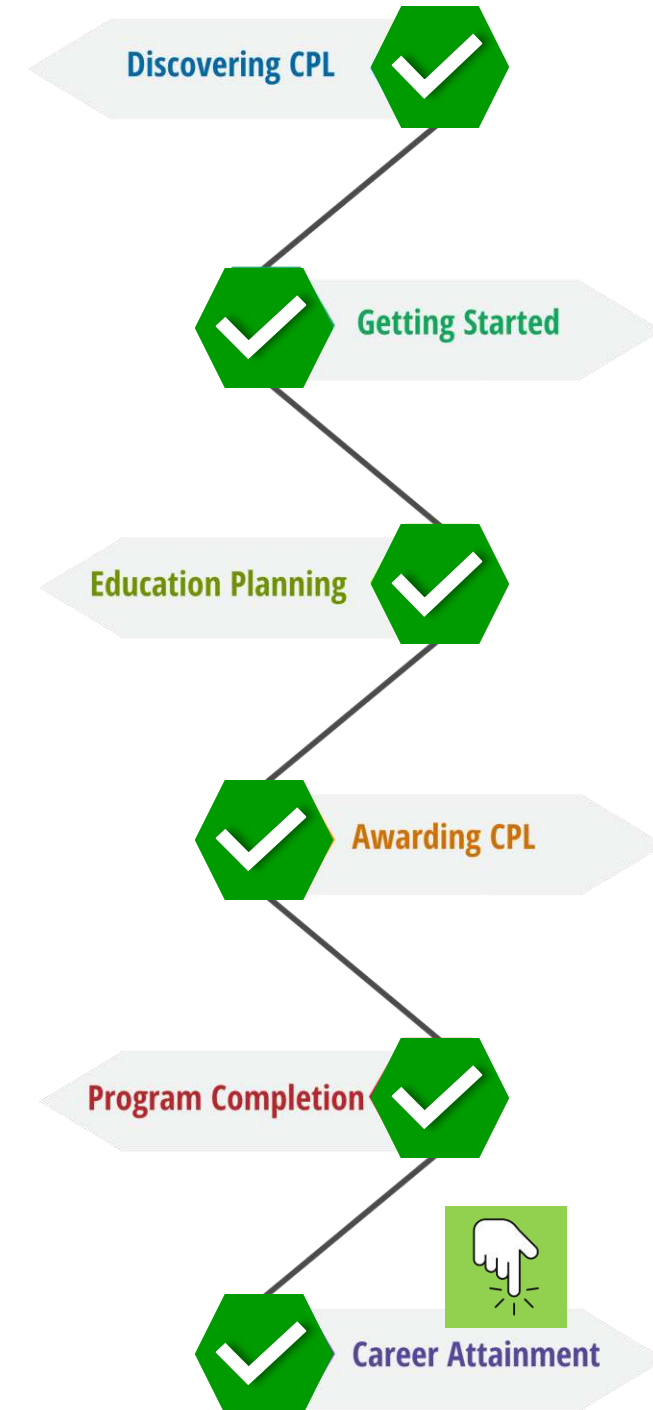


Integrations and
Partnerships with:



With 20 Units Rochelle...

- 3x as likely to obtain a Bachelor degree
- Graduate a full year earlier
- \$14,653 Savings & Preservation of Funds
- \$115,000 Increased 20-year Economic Output
- Family is more likely to pursue higher education



Outreach Opportunities



DRAFT

Are you currently a **PARAMEDIC?**

Your career serving the public requires dedication to intense academy preparation and on-the-job training. You may be eligible to earn up to 38.5 units toward your associate degree in Paramedic (MAS585) with completion of General Education courses.

Possible Units Earned

Credit Recommendation	MVC Course	CSU Transferrable	Units
Patient Assessment and Airway Management	EMS-60	Yes	4
Introduction to Medical Pathophysiology	EMS-61	Yes	3
Emergency Pharmacology	EMS-62	Yes	4
Cardiology	EMS-63	Yes	4
Trauma Management	EMS-70	Yes	2.5
Clinical Medical Specialty I	EMS-71	Yes	1.5
Medical Emergencies	EMS-80	Yes	4
Special Populations	EMS-81	Yes	3
Special Topics	EMS-82	Yes	2.5
Clinical Medical Specialty II	EMS-83	Yes	1.5
Paramedic Field Internship	EMS-91	Yes	8.5

RCCD General Education (GE)

Needed for Associate Degree

- **Area 1:** English Composition, Oral Communication and Critical Thinking | 7-8 units
- **Area 2:** Mathematical Concepts and Quantitative Reasoning | 3-4 units
- **Area 3:** Arts and Humanities | 3-5 units
- **Area 4:** Social and Behavioral Sciences | 3 units
- **Area 5:** Natural Sciences | 3-5 units
- **Area 6:** Ethnic Studies | 3
- **Area 7:** Lifelong Learning and Self Development | MET



For More Information



bit.ly/mvc-credit-prior



MVCEvaluations@mvc.edu



Are you currently a Peace Officer having earned your Basic POST Certificate?

Let Norco College recognize you for your service to our community! We know that your career serving the public required dedication through intense academy preparation, on-the-job training, and service above self. You may be eligible to earn up to 24 units of Credit for Prior Learning (CPL) towards a degree in Administration of Justice with transferability towards a bachelor's degree.

Possible Units:

Credit Recommendation	Norco Course	CSU Transferable	Units
Intro. to Administration of Justice *	ADJ-1	Yes	3
Criminal Procedures	ADJ-2	Yes	3
Criminal Law *	ADJ-3	Yes	3
Criminal Evidence	ADJ-4	Yes	3
Community Relations	ADJ-5	Yes	3
Juvenile Law and Procedures	ADJ-8	Yes	3
Intro. to Policing	ADJ-19	Elective	3



RCCD General Education (GE)

Needed for Associate Degree

- **Area 1:** English Composition, Oral Communication and Critical Thinking | 7-8 Units
- **Area 2:** Mathematical Concepts and Quantitative Reasoning | 3-4 Units
- **Area 3:** Arts and Humanities | 3-5 Units
- **Area 4:** Social and Behavioral Sciences | 3 Units *
- **Area 5:** Natural Sciences | 3-5 Units
- **Area 6:** Ethnic Studies | 3 units
- **Area 7:** Lifelong Learning and Self Development | MET



GE Approved Courses



Learn more about CPL here:

For More Information

Dr. Sigrid Williams
Associate Professor in Administration of Justice | CPL Coordinator
Sigrid.Williams@norcocollege.edu | 951-739-7825
or your counselor and/or CPL Team at
CPL@NorcoCollege.edu

3-Step Implementation

1. Organize:

- Add CPL updates to regular agendas for admin and senate leadership
- Establish a CPL strike team with key roles (MAP Ambassador, CPL Faculty Coordinator, CPL Counselor, etc.)

2. Prepare:

- Watch [Rochelle's CPL Story](#) and other [MAP training videos](#)
- Collect sample CPL documents (e.g., 1 Joint Services Transcript (for a veteran), AND 1 student with an industry certification)

3. Practice:

- Schedule a session with the MAP Team by contacting contact Calvin Gloria at Calvin.Gloria@rccd.edu
- Meet with team to verify users and approvers, and upload sample CPL documents to begin processing

For more information, visit map.rccd.edu or contact MAP Program Manager Calvin Gloria at Calvin.Gloria@rccd.edu.

5th Annual CPL Summit

1. MAP is now available to all 116 CCCs at no cost. To implement at your college, complete our [Request Form](#) at: <https://map.rccd.edu/>
2. For more information, contact MAP Program Manager, Calvin Gloria at Calvin.Gloria@rccd.edu
3. **REGISTER NOW: 5th Annual CPL Summit**
 - When: Friday, November 1st, 2024 | 8:30AM-12:00PM
 - Where: Via Zoom
 - Required for all new MAP cohort colleges



<https://californiacommunitycolleges.eventevents.com/event/CPLSummit/summary>

REGISTER NOW

Regional Convenings

Upcoming Regional Convenings:

1. Central

- December 3rd – Anaheim Hyatt Regency

2. South

- January 31st – San Diego Marriot

3. North

- April 8th – Sacramento Holiday Inn