

2023 SPRING SEMESTER

NOCE

NORTH ORANGE

CONTINUING EDUCATION

LEARN & EARN

**Business Careers
for English Learners**

PAGE 63

NO COST TO YOU

**Adult High School
Diploma**

PAGE 13

IN YOUR COMMUNITY

**Mature Driver,
Health & Wellness**

STARTING ON PAGE 65

**FREE CLASSES * FREE PARKING * FREE FOOD
FREE WIFI * LAPTOP AND TEXTBOOK LOANS**

Registration Starts

December 6, 2022

🌐 NOCE.EDU 📞 714.808.4679

MAKE YOUR NEXT MOVE

Whether you want to complete your high school diploma, move up in your career, or learn new job skills, there's a **FREE** course waiting for you at NOCE!

Explore noce.edu

Mission

NOCE serves our diverse community by providing holistic programs and services that are relevant and accessible to all learners in achieving their goals. NOCE is dedicated to offering a transformative educational experience that builds lasting foundational skills and promotes student success.

Vision

NOCE commits to enriching lives through education to meet the evolving needs of the community.

Values

- **Accountability** – We strive to utilize data-informed decision-making processes.
- **Diversity** – We celebrate our diverse community by committing ourselves to an inclusive institutional culture.
- **Equity** – We actively address achievement gaps and systemic racism to ensure equal opportunity and access for all.
- **Excellence** – We strive for excellence by providing evolving, dynamic, high-quality instruction.
- **Innovation** – We challenge the status quo by finding creative solutions.
- **Integrity** – We cultivate a collaborative equity-minded culture of mutual respect, honesty, and responsibility.
- **Learning** – We commit to offering holistic programs that promote personal and professional growth.

ANAHEIM CAMPUS

Table of Contents

About This Schedule

NOCE Programs	02
Important Semester Dates	04
Understand the Class Schedule	05
How to Become an NOCE Student	06
Centers and Community Locations	07
Student Resources	10

High School Diploma and Basic Skills

Program Overview	13
Adult High School Diploma	15
GED/HiSET Preparation	17
College Preparation	18
Learning Centers	19

Career Technical Education

Overview/Career Resources	21
Business/Office Technology	23
Bookkeeping	25
Computers	27
Early Childhood Education	29
Electrical Technology	31
Funeral Service Assistant	31
Management	32
Medical Assistant	34
Personal Care Aide	38
Pharmacy Technician	39
Quality Assurance Management for Medical Devices	42

Disability Support Services

Program Overview	44
Certificate Tracks	46
WISE Program	49

English and U.S. Citizenship

Program Overview	51
ESL Core	53
Academic Success	57
Citizenship	58
ESL Specialty	59
Community-Based Off-Site	61
Career Pathways	63

Active Older Adults/ Emeritus

Program Overview	65
Mature Driver	66
Communication	67
Creative Arts	68
Body and Mind	72

Parenting

Program Overview	76
Parent-and-Me	77
Foundational Parenting	78
Love and Logic® Classes	79
Child Wellness	80

Community Services

Program Overview	82
Ed2Go	82

Information and Policies

Information and Policies	83
--------------------------	----

NOCE Programs

NOCE provides a variety of pathways to help students gain skills to transition to academic, career, and life enrichment opportunities.

High School Diploma and Basic Skills

- Complete your high school diploma.
- Prepare for college.
- Get tutoring and support.
- Study for the GED/HiSET exams.



Career Technical Education

- Take quality, tuition-free career classes.
- Earn certificates in just 1-4 semesters!
- Succeed in high-demand industries:

Administrative
Bookkeeping
Business
Child Development
Computers & Technology
Customer Service
Electrical
Healthcare
Management



Disability Support Services

- Increase independence and self-advocacy.
- Prepare for and obtain competitive employment.
- Access disability support services for college courses.
- Get support with emotional health and social skills.



English and U.S. Citizenship

- Practice listening, speaking, reading, and writing skills.
- Learn English and job skills at the same time.
- Prepare for the U.S. Citizenship Test.
- Develop academic skills for success in college.



Active Older Adults/Emeritus

- For adults ages 50+, but open to anyone 18+.
- Empower independence, advocacy, physical and cognitive health, economic self-sufficiency, and community engagement.



Parenting

- Improve parenting skills.
- Deepen connections with the children in your life.
- Create a thriving home.



Community Education (Fee-Based)

- Learn new skills.
- Personal enrichment classes in art, career skills, business, sign language, and more!



Need Translated Instructions?

Scan to translate

¿Necesita instrucciones traducidas?

Escanear para traducir.

Important Semester Dates



2023 Spring

Classes

Jan 13 - May 27, 2023

Registration Begins

Tues, Dec 6, 2022



2023 Summer

Classes

Jun 5 - Aug 4, 2023

Registration Begins

Tues, May 2, 2023

NOCE will be closed and no classes will be held on the following holidays:

- January 16: Martin L. King, Jr.
- February 17-20: Presidents' Day Weekend
- March 20-26: Spring Recess
- March 31: Cesar Chavez
- May 29: Memorial Day

You Can Do It! We Can Help.

Get Started:

noce.edu/apply

Need Help? Contact Us:

714.808.4679 or starhelp@noce.edu

Registration Hours:

Mon - Thu: 7:30 a.m. - 7 p.m.
Fri: 7:30 a.m. - 4 p.m.

Health & Safety:

noce.edu/vaccine



Scan for Help

COVID-19 Vaccine Recommended

NOCE cares for your health and safety. As of January 1, 2023, the COVID-19 vaccination is no longer required, but rather is strongly recommended for all students, staff, and community members visiting NOCCCD campuses. For resources related to the COVID-19 vaccine and booster, visit noce.edu/vaccine.

★ WATCH FOR HELPFUL STUDENT TIPS

Throughout the schedule, pay attention to the pink star for important tips.

Understand the Class Schedule

How to Read Course Listings

Course Title

Prerequisite; corequisite; and/or advisory

Course Reference Number

Course start and end dates

Pharmacy Technician, Lab for the In-Patient (Formerly MEDO 221)

PTEC 200

Prerequisite: PTEC 105 Pharmacy Operations Lab and PTEC 110 Pharmaceutical Mathematics and PTEC 115 Pharmacology I and PTEC 120 Pharmacology II. Course covers the preparation of medications given by intravenous, epidural and subcutaneous routes of administration. The student will learn aseptic techniques, pharmacy IV calculations, drug compatibilities and stabilities, IV therapy management, and specialized equipment. The laboratory incorporates use of laminar and vertical flow hoods and computerized software for IV preparation. **Textbook Required.**

CRN	Dates	Days	Time	Location	Instructor
50947	8/15 - 10/14	Remote	Remote	ONLINE - ONLINE	Shields, Julie
	8/17 - 10/12	W	06:00pm-07:50pm	Anaheim Campus - 406	Shields, Julie
	Required In-Person Dates/Times: Aug 17, Aug 24, Aug 31, Sept 7, Sept 14, Sept 21, Sept 28, Oct 5, and Oct 12 from 8:00am-8:00am				
51136	10/17 - 12/16	Remote	Remote	ONLINE - ONLINE	Shields, Julie
	10/19 - 12/14	W	09:00am-10:50am	Anaheim Campus - 406	Shields, Julie
	Required In-Person Meeting Dates/Times: Oct 19, Oct 26, Nov 2, Nov 9, Nov 16, Nov 23, Nov 30, Dec 7, and Dec 14 from 9:00am-11:00am				

Subject code/ Course number

Course description

Instructor who is teaching the class.

Day(s) of class:
M: Monday
T: Tuesday
W: Wednesday
Th: Thursday
F: Friday
S: Saturday
Remote: Days of Class at Home/ Off-Site Location

Important class notes. Comments about meeting dates.

Center and/or location where class will be held:
AN: Anaheim Campus
CC: Cypress College
CYP18: Cypress Continuing Education Center, NOCE Building 18
CYPTE2: Cypress Continuing Education Center, NOCE/TE2 Building 12
FC: Fullerton College
WIL: Wilshire Continuing Education Center (in Fullerton)

Learning Options - Types of Classes

- Zoom**

Online

Hybrid

Face-to-Face

Courses scheduled at specific days/times (synchronous). Mostly meet in Canvas on Zoom.

Completely online classes done on your own (asynchronously) in Canvas. Optional meeting times may be listed in the class notes.

Classes that have online coursework in Canvas and in-person classes on specific days/times. Students must attend both.

Classes that are completely in-person and scheduled on campus at specific days/times.

Canvas

Canvas is NOCE's Learning Management System used by instructors to deliver online materials to students and also enhance in-person instruction. Students can communicate with their instructor as well as access course readings, assignments, syllabi, and grades through Canvas. Visit noce.edu/canvas to access and login using your Student ID# and password, which is the same as your myGateway password.

Become an NOCE Student Today!

Tuition-Free Noncredit Classes

1 Apply for a Student ID at noce.edu/apply

1. Create an OpenCCC Account
2. Complete the Noncredit College Application
3. In 24-48 hours, you will receive your student ID required for remaining steps

2 Choose Your Program

Look up your program for registration details:

- **Basic Skills** – High School Diploma, GED, College Preparation, or Learning Centers: see page 13-14
- **Career Technical Education:** see page 22
- **Disability Support Services:** see page 45
- **English as a Second Language/Citizenship:** see page 51
- **Active Older Adults/Emeritus:** see page 65
- **Parenting:** see page 76

3 Start Your Courses!

See you in class! Courses start at various times throughout the term, starting the week of **January 13, 2023**; see course descriptions for specific start dates.

- For **in-person** classes, attendance on the first day of class is mandatory.
- **Online students** must sign in to Canvas during the first week of class.
- Spots in class may be reassigned to other students if this requirement is not met.

For more information, visit noce.edu/academic-policies.

Fee-Based Community Services Classes

1 Apply at noce.edu/grow

Create a new student or household profile.

2 Browse Classes

Click on the “BROWSE” dropdown button to view available classes and categories.

3 Pay for Classes

Click “ADD TO CART” to select the class you want to take. You can add multiple classes to your cart before checkout. Follow the prompts to confirm and pay for classes.

★ Need Help? Contact StarHelp at **714.808.4679** or starhelp@noce.edu

Center Locations

Admissions and Records Support Hours

NOCE Centers are open for in-person classes. See course descriptions for specific locations.

Anaheim Campus

1830 W. Romneya Drive, Anaheim, CA 92801

Admissions and Records: Floor 2

714.808.4645

Monday - Thursday: 8 a.m. — 7 p.m.

Friday: 8 a.m. — 4 p.m.



Cypress Center

9200 Valley View Street, Cypress, CA 90630

Admissions and Records: Building 18, by Parking Lot 4

714.484.7038

Monday - Thursday: 8 a.m. — 5 p.m. (Bldg 18, Rm 100)

Monday - Thursday: 5 p.m. — 7 p.m. (TE2, Rm 207)

Friday: Closed; we offer remote support on Fridays

Call StarHelp at **714.808.4679**



Wilshire Center

315 E. Wilshire Avenue, Fullerton, CA 92832

Admissions and Records: Building 300

714.992.9500

Monday - Thursday: 8 a.m. — 7 p.m.

Friday: Closed; we offer remote support on Fridays

Call StarHelp at **714.808.4679**



Register Anywhere!

Walk-in Registration

No matter where the class is held, students can register at any NOCE Center.

Walk-ins are welcome on a first-come, first-serve basis.

Get Help with Registration

For online and phone registration assistance, contact: **714.808.4679** or starhelp@noce.edu or visit noce.edu/registration.

Community Locations

NOCE offers classes at 75+ community locations in partnership with K-12 schools, community centers, senior centers, skilled nursing facilities, churches, and more. Only specific NOCE courses are offered at each location. Check course listings for more details.

Anaheim

Access California Services	300 W. Carl Karcher Way
Anaheim Crown Plaza	641 S. Beach Blvd.
Anaheim Terrace Care Center	141 S. Knott Ave.
Anaheim VIP Center	1158 N. Knollwood Cir
Arbor Palms of Anaheim	3411 W. Ball Rd.
Ball Junior High	1500 W. Ball Rd.
Brookdale Anaheim	200 N. Dale Ave.
Buena Vista Care Center	1440 S. Euclid St.
Coventry Court Health Center	2040 S. Euclid St.
Danbrook Elementary	320 S. Danbrook Dr.
Downtown Anaheim Community Center	250 E. Center St.
Emerald Court	1731 Medical Center Dr.
Harbor Villa Care Center	861 S. Harbor Blvd
Higher Ground Youth & Family Services	1535 E. Broadway
Karlton Residential Care Center	3615 W. Ball Rd.
La Palma Nursing Center	1130 W. La Plama Ave.
Leisure Court	11135 Leisure Ct.
Palm Lane Global Academy	1646 W. Palm Ln.
Park Anaheim Healthcare Center	3435 W. Ball Rd.
Ponderosa Park Family Resource Center	2100 S. Haster St.
Rio Vista Elementary	310 N. Rio Vista St.
Senior Citizen's Center Anaheim	250 E. Center St.
St. Boniface Church	120 N. Janss St.
Sun Mar Nursing Center	1720 W. Orange Ave.
Sycamore Jr High School	1801 E. Sycamore St.
W. Anaheim Extended Care Hospital	645 S. Beach Blvd.
Windsor Gardens of Anaheim	3415 W. Ball Rd.

Brea

Brea Community Center	500 S. Sievers Ave.
Brea Memory Care Community	149 W. Lambert Rd.
Brea Senior Center	500 Sievers Ave.
Happy Brea Adult Day Health Care	596 Apollo St.

Buena Park

Buena Park Nursing Center	8520 S. Western Ave.
Buena Park Senior Center	8150 Knott Ave.
Cottage of Artesia Gardens	6041 Kingman Ave.
Harvest Retirement Health Center of OC	9011 Knott Ave.
	9021 Knott Ave.

Cypress

Cypress Senior Center	9031 Grindlay St.
Cypress Sunrise Village Apartments	9151 Grindlay St.
Boys and Girls Club of Greater Anaheim	10161 Moody St.
Westmont of Cypress	4889 Katella Ave.

Fullerton

Cambridge Court	1621 E. Commonwealth Ave.
Crescent Landing at Fullerton Memory Care	1510 E. Commonwealth Ave.
Fullerton Community Center	340 W. Commonwealth Ave.
Gilbert Community Center	2120 W. Orangethorpe Ave.
Gordon Lane Care Center	1821 E. Chapman Ave.
Morningside of Fullerton	800 Morningside Dr.
Palm Retirement Center	312 N. Roosevelt Ave.
Park Vista Assisted Living	2527 Brea Blvd.
Park Vista, Morningside	2525 Brea Blvd.
Rehab Institute Southern California	130 Laguna Rd.
St. Catherine	245 E. Wilshire Ave.
St. Elizabeth Healthcare	800 Morningside Dr.
Sunrise Assisted Living Fullerton	2226 N. Euclid Ave.
Terrace View Care Center	201 E. Bastanchury Rd.
The Pavillion, Sunny Hills	2222 N. Harbor Blvd.
Topaz Elementary	3232 Topaz Ln.
Valencia Park Elementary	3441 W. Valencia Dr.

Garden Grove

Chapman Care Center	12232 Chapman Ave.
Crescent Landing	11848 Valley View St.
Garden Grove	
Orangegrove Rehab Hospital	12332 Garden Grove Blvd.

La Habra

La Habra Community & Senior Services Center	101 W. La Habra Blvd.
Bonita Hills Post Acute	1233 W. La Habra Blvd.
Park Regency Care Center	1770 W. La Habra Blvd.
Park Regency Retirement Center	1750 W. La Habra Blvd.
Whitten Heights	200 W. Whittier Blvd.

Community Locations

La Palma

La Palma Community Center	7821 Walker St.
Sunrise Assisted Living La Palma	5321 La Palma Ave.

Los Alamitos

Alamitos West Health Care Center	3902 W. Katella Ave.
----------------------------------	----------------------

Placentia

Crescendo Senior Living of Placentia	351 E. Palm Dr.
Emerald Isle Senior Apartments	661 N. Rose Dr.
Golden Elementary School	740 E. Golden Ave
Ivy Park, Bradford	1180 N. Bradford Ave.
Kraemer Middle School	645 N. Angelina Dr.

Seal Beach

Leisure World Seal Beach	13533 Seal Beach Blvd.
--------------------------	------------------------

Stanton

New Horizons	8541 W. Cerritos Ave.
Rowntree Gardens	12151 Dale Ave.
Stanton Civic Center	7800 Katella Ave.

Whittier

Whittier Glen	10615 Jordan Rd.
Whittier Hills Healthcare Center	10426 Bogardus Ave.

Yorba Linda

Fairmont Elementary School	5241 Fairmont Blvd.
PYLUSD District Office	1301 E. Orangethorpe Ave.
PYLUSD Professional Development Academy	4999 Casa Loma Ave.
Rose Drive Elementary School	4700 Rose Dr.
Senior Living Community	16850 Bastanchury Rd.
Serento Rosa Senior Living	17803 Imperial Hwy.
Yorba Linda Senior Center	4501 Casa Loma Ave.



Helping You Succeed

You can do it – we can help! NOCE has support services to help you succeed.

Visit noce.edu/student-services for more information.

Counseling

Academic counselors help students get the most out of their education.

- Educational planning
- Support with transition to college and career
- Goal setting
- Referral to NOCE or community resources

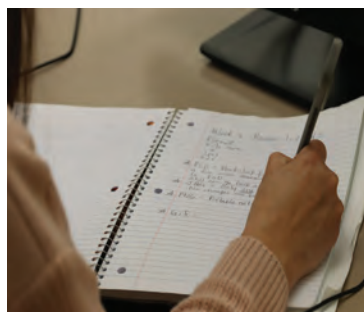
In-person, virtual, or phone appointments are available at **714.808.4682** or noce.edu/counseling.



Scholarships and Book Awards

The NOCE Scholarship and Book Award Program is designed to meet student needs and honor student achievement and leadership. NOCE offers scholarships or book awards throughout the year to assist with fees associated with books, access codes, instructional materials, or transition to credit college.

Visit noce.edu/scholarships.



Food and Basic Needs Support

Pathways of Hope and NOCE provide students with non-perishable food, fresh produce, and resource information at the Anaheim Campus Food Pantry. Additional pantries also available to NOCE students at Cypress College and Fullerton College.

Visit noce.edu/foodpantry.



Free Wi-Fi

NOCE students can drive up to the Anaheim Campus, Cypress College, or Fullerton College for internet access.

Visit noce.edu/wifi.



Laptop Computer Loans

NOCE students taking online courses can check out a laptop for the semester.

Visit noce.edu/laptop-loan.



Tutoring

NOCE offers **free** academic tutoring through the Basic Skills Learning Center at Anaheim and Cypress. Students can visit for in-person support or schedule a session online.

For hours and details, visit noce.edu/tutoring.

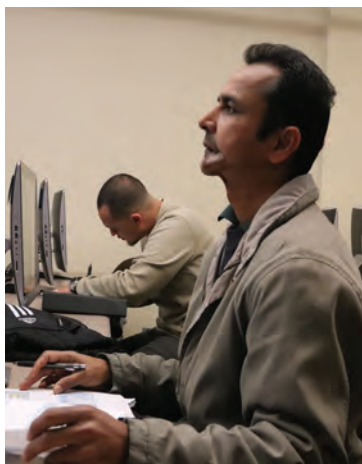


Student E-mail

All students have an NOCE e-mail to use for:

- Getting all school updates and news
- Logging into loaner laptops
- Communicating with teachers
- Connecting to campus Wi-Fi
- Accessing computer labs
- and more...

Visit noce.edu/student-email.





HIGH SCHOOL DIPLOMA AND BASIC SKILLS

Complete the high school diploma.

Prepare for college.

Get tutoring support.

Study for the GED/HiSET exam.

Explore noce.edu/basicskills.



Need Translated Instructions?

¿Necesita instrucciones traducidas?

Haga clic en "Traducir" en la esquina superior derecha de la página. Seleccione su idioma para traducir el sitio. O llame al **714.808.4679** para obtener más ayuda.

Program Overview

High School Diploma

This **FREE** program is open to adult students (18+) who want to complete their high school diploma at their own pace. All instructional materials, including textbooks, are provided for in-class use at no cost to students. This program is offered in-person at our three NOCE Centers. Select high school subjects are offered online. More information at noce.edu/diploma. For more information on attendance, drops, and waitlist policy, please visit: noce.edu/academic-policies.

Ready to Earn Your High School Diploma?

Once you've applied to NOCE...

1. Complete General Orientation through myGateway at noce.edu/mygateway. Visit noce.edu/orientation for details.
2. Send official sealed transcripts from previous schools to NOCE Wilshire Center, 315 E. Wilshire Avenue, Bldg 300, Fullerton, CA 92832, ATTN: HS RECORDS.
3. Meet with a counselor: **714.808.4682** or counseling@noce.edu.
4. CASAS assessment is required. For information, call **714.808.4607**.
5. Attend class at your selected high school lab to enroll in your high school subject.
 - **Anaheim Campus:** 1830 W. Romneya Drive, Room 139, Anaheim, CA 92801
 - **Cypress Center:** 9200 Valley View Street, Room TE-2/205, Cypress, CA 90630
 - **Wilshire Center:** 315 E. Wilshire Avenue, Room 117/118, Fullerton, CA 92832
6. Select high school subjects are offered online. Register for online classes using myGateway at noce.edu/mygateway. Attend class online by logging into Canvas at noce.edu/canvas on the start date.

Need Registration Help?

Visit noce.edu/diploma-registration

New and Returning Students:

Contact StarHelp at **714.808.4679** or starhelp@noce.edu.

Continuing Students:

Contact your instructor to register for a high school subject.

GED/HiSET

This program is for adults (18+) wishing to prepare to obtain a GED or HiSET certificate. NOCE prepares students to take the GED/HiSET Exam. This program is offered online or as an in-person instructor-led course at the Anaheim Campus. CASAS assessment is required; for information call **714.808.4607**. More information at noce.edu/ged. For more information on attendance, drops, and waitlist policy, visit: noce.edu/academic-policies.

College Preparation

The College Preparation Program helps students develop critical thinking and language skills to succeed in college-level credit courses. Noncredit College Prep Math and English courses strengthen foundational mathematical, reading, and writing skills. More information at noce.edu/collegeprep. For more information on attendance, drops, and waitlist policy, please visit: noce.edu/academic-policies.

Ready to Get Started?

Once you've applied to NOCE...

1. Register for classes online using myGateway at noce.edu/mygateway. Check out noce.edu/registration-info for details.
2. Attend class online by logging into Canvas at noce.edu/canvas on the start date.

Basic Skills Learning Centers

Basic Skills Learning Centers are open to students in all programs and provide the skills to attain academic and employment goals! Students can work with faculty and tutors in small groups or individually on subjects such as math, grammar, and reading.

Ready to Get Started?

Once you've applied to NOCE...

1. Register for classes online using myGateway at noce.edu/mygateway. Check out noce.edu/registration-info for details.
2. Attend in-person Learning Centers at:
 - **Anaheim Campus:** 1830 W. Romneya Drive, Room 140, Anaheim, CA 92801
 - **Cypress Center:** 9200 Valley View Street, Room TE-2/209, Cypress, CA 90630
3. Enroll in Supervised Tutoring for online and/or in-person academic support.

Info Sessions

Want to learn more about the various Basic Skills Programs such as requirements, schedule, format of classes, and steps to register? Join us on Zoom: noce.edu/info-sessions.

★ NOTE

As of January 1, 2023, the COVID-19 vaccination is no longer required, but is still strongly recommended for all persons visiting NOCCCD campuses. More information at noce.edu/vaccine.

High School Diploma, In-Person Classes

This program is designed for adults (age 18+) who want to complete the requirements for a high school diploma. All instructional high school diploma subject materials are provided for in-class use at no cost to the students. **Registration for in-person high school labs is ongoing.** New diploma students, please contact StarHelp at 714.808.4679. Continuing diploma students, please contact your instructor to register for a high school subject. **CASAS assessment is required.**

NOCE Center & Room	Hours: Daytime	Hours: Evening	Contact number
Anaheim Campus - Room 139	Monday-Friday, 8:30a-2:45p	Monday-Thursday, 5:00p-9:00p	(714) 808-4582
Cypress Center - TE2-205	Monday-Thursday, 8:30a-2:45p Fridays, 8:30a-1:00p	Monday-Thursday, 5:00p-9:00p	(714) 484-7438
Wilshire Center - WIL 117/118	Monday-Thursday, 8:30a-2:45p Fridays, 8:30a-1:00p		(714) 992-9538

High School Diploma, Online Classes

For more information on attendance, drops, and waitlist policy please visit: noce.edu/academic-policies. **CASAS assessment is required**

High School Economics A

IHSS 305

Advisory: CASAS reading score of 228 or higher. Economics A explores the fundamental economic concepts and reasoning, the American Market Economy, the government's influence on the market economy, taxes, deficits, and the Federal Reserve Bank and the impact of these concepts on various groups, including racial, socioeconomic, and gender.

CRN	Dates	Days	Time	Location	Instructor
61521	1/16 - 2/14	Remote	Remote	ONLINE - ONLINE	Lacuesta, George
61523	3/27 - 4/25	Remote	Remote	ONLINE - ONLINE	Lacuesta, George

High School Economics B

IHSS 306

Advisory: CASAS reading score of 228 or higher. Economics B explores labor markets, aggregate economic behavior, globalization, and the impact of the global economy and these concepts on various groups, including racial, socioeconomic, and gender.

CRN	Dates	Days	Time	Location	Instructor
61522	2/15 - 3/17	Remote	Remote	ONLINE - ONLINE	Lacuesta, George
61524	4/26 - 5/26	Remote	Remote	ONLINE - ONLINE	Lacuesta, George

High School US Government A

IHSS 310

Advisory: CASAS reading score of 228 or higher. U.S. Government Course A explores the fundamentals of American democracy, the branches of government, evaluates the comparative governments and the challenges of democracy, and the impact of non-state actors on the global community from multiple perspectives, including race, gender, and socio-economic status.

CRN	Dates	Days	Time	Location	Instructor
61525	1/16 - 2/14	Remote	Remote	ONLINE - ONLINE	Bailey-Blenman, Jessica
61527	3/27 - 4/25	Remote	Remote	ONLINE - ONLINE	Bailey-Blenman, Jessica

High School US Government B

IHSS 311

Advisory: CASAS reading score of 228 or higher. U.S. Government Course B explores the rights and responsibilities of citizens in a democracy, the fundamental principles of civil society, the electoral process, and the role of media in public life from multiple perspectives, including race, gender, and socio-economic status.

CRN	Dates	Days	Time	Location	Instructor
61526	2/15 - 3/17	Remote	Remote	ONLINE - ONLINE	Bailey-Blenman, Jessica
61528	4/26 - 5/26	Remote	Remote	ONLINE - ONLINE	Bailey-Blenman, Jessica



High School US History A

IHSS 315

Advisory: CASAS reading score of 228 or higher. US History A explores the founding of the original thirteen colonies, the creation of a new country, causes of the Civil War, and the Reconstruction era and the impact of each of these events on racial and socio-economic groups and gender roles from multiple perspectives.

CRN	Dates	Days	Time	Location	Instructor
61529	1/16 - 2/14	Remote	Remote	ONLINE - ONLINE	Yore, Jason

High School US History B

IHSS 316

Advisory: CASAS reading score of 228 or higher. US History B explores post-Civil War, westward expansion, the Industrial Revolution through World War I and the impact these events on racial and socio-economic groups and gender roles from multiple perspectives and how they shape current events.

CRN	Dates	Days	Time	Location	Instructor
61530	2/15 - 3/17	Remote	Remote	ONLINE - ONLINE	Yore, Jason

High School US History C

IHSS 317

Advisory: CASAS reading score of 228 or higher. US History C explores the Great Depression and the New Deal, World War II, the Cold War, and US post-war foreign policy and the impact these events on racial and socio-economic groups and gender roles from multiple perspectives and how they shape current events.

CRN	Dates	Days	Time	Location	Instructor
61531	3/27 - 4/25	Remote	Remote	ONLINE - ONLINE	Yore, Jason

High School US History D

IHSS 318

Advisory: CASAS reading score of 228 or higher. US History D explores the Civil Rights Era, the end of the Cold War, Globalism, and contemporary America, and the impact these occurrences have on racial and socio-economic groups and gender roles from multiple perspectives and how they shape current events.

CRN	Dates	Days	Time	Location	Instructor
61532	4/26 - 5/26	Remote	Remote	ONLINE - ONLINE	Yore, Jason

GED/HiSET Preparation

For more information on attendance, drops, and waitlist policy please visit: noce.edu/academic-policies.
CASAS assessment is required.

GED/HiSET: Mathematics

ABED 405

GED/HiSET mathematics prepares students to pass the math section of the GED/HiSET test. The GED/HiSET pre-test identifies needed areas of instruction for each student. Scope of instruction is basic computation, analytical and reasoning skills, word problems and word problems with graphics.

CRN	Dates	Days	Time	Location	Instructor
60138	1/13 - 3/17	M W	08:30am-12:20pm	ZOOM - ZOOM	Tran, Tam
<i>This course will be focused on: Basic Math Skills, Problem Solving with Real Numbers, and Geometry.</i>					
60139	3/27 - 5/26	M W	08:30am-12:20pm	ZOOM - ZOOM	Tran, Tam
<i>This course will be focused on: Statistics and Probability, Algebraic Expressions, Algebraic Equations, and Functions.</i>					
60666	3/27 - 5/26	M W	05:00pm-08:50pm	ZOOM - ZOOM	Tran, Tam
<i>This course will be focused on: Statistics and Probability, Algebraic Expressions, Algebraic Equations, and Functions.</i>					

GED/HiSET - Reading

ABED 406

GED/HiSET reading prepares students to pass the reading section of the GED test. The GED/HiSET pre-test identifies needed areas of instruction for each student. Scope of instruction includes comprehension, fiction, nonfiction, poetry, and drama.

CRN	Dates	Days	Time	Location	Instructor
60667	1/13 - 3/17	T Th	08:30am-12:20pm	ZOOM - ZOOM	Jeanpierre, Shani
60669	3/27 - 5/26	T Th	08:30am-12:20pm	ZOOM - ZOOM	Jeanpierre, Shani

GED/HiSET: Science

ABED 407

GED/HiSET science prepares students to pass the science section of the GED/HiSET test. Sciences covered are life, physical, earth and space. Students learn to analyze and apply science information.

CRN	Dates	Days	Time	Location	Instructor
60665	1/13 - 3/17	M W	05:00pm-08:50pm	ZOOM - ZOOM	Tran, Tam

GED/HiSET: Social Studies

ABED 408

GED/HiSET social studies prepares students to pass the social studies section of the GED/HiSET test. The GED/HiSET pre-test identifies needed areas of instruction for each student. Scope of course covers U.S. history, world history, civics and government, geography and economics.

CRN	Dates	Days	Time	Location	Instructor
60668	1/13 - 3/17	T Th	05:00pm-08:50pm	ZOOM - ZOOM	Jeanpierre, Shani

GED/HiSET: Language Arts and Writing

ABED 409

GED/HiSET writing prepares students to pass the language arts and writing section of the GED/HiSET test. The GED/HiSET pre-test identifies needed areas of instruction for each student. This course covers the writing process, grammar usage and mechanics.

CRN	Dates	Days	Time	Location	Instructor
60140	3/27 - 5/26	T Th	05:00pm-08:50pm	ZOOM - ZOOM	Jeanpierre, Shani

College Preparation

For more information on attendance, drops, and waitlist policy please visit: noce.edu/academic-policies.

College Prep English Reading and Writing

ABED 150

Advisory: Proficient English reading skills, vocabulary, comprehension, composition writing skills and basic computer skills. This non-credit course is intended for students who desire to strengthen developmental English reading and writing skills by emphasizing a comprehensive approach to reading and writing. Topics include: academic comprehension, vocabulary development, reading efficiency, study techniques, and academic composition.

CRN	Dates	Days	Time	Location	Instructor
60009	1/13 - 5/26	T Th	09:00am-10:50am	ZOOM - ZOOM	Gibbons, Emilee

College Prep - Basic Math

ABED 110

Advisory: Basic computer navigation skills. This noncredit course is intended for students who desire to build or strengthen foundational level mathematical skills such as the addition, subtraction, multiplication, and division of whole numbers, fractions, decimals, percents, and integers. These concepts are applied to ratios, exponents, measurements, proportions, statistics, metric conversions, and geometric shapes. In addition, these operations, along with basic number theory, are used to solve real world problems. All work will be done without a calculator.

CRN	Dates	Days	Time	Location	Instructor
60003	1/13 - 5/26	T Th	06:00pm-07:50pm	ZOOM - ZOOM	Al Rubaye, Wasan

College Prep Pre-Algebra

ABED 115

Advisory: ABED 110 College Prep - Basic Math or completion of a comparable Basic Math course. This noncredit course is a review of basic math skills and an introduction to the basic principles of algebra. Topics include: Integers and algebraic expressions; operations on integers, mixed numbers and decimals, ratio, fractions, proportion and percentages; introduction of polynomials; polynomials and properties of exponents; factoring polynomials; solving linear equations and linear inequalities; graphing linear equations; equation solving and informal geometry.

CRN	Dates	Days	Time	Location	Instructor
60004	1/13 - 5/26	M W	11:00am-12:50pm	ZOOM - ZOOM	Al Rubaye, Wasan

College Prep Elementary Algebra

ABED 116

Advisory: Knowledge of basic math skills and pre-algebra and order of operations to solve problems involving integers, fractions, and decimals. This noncredit course is an introduction to algebra. Topics include: basic operations of integers, fractions, mixed numbers and decimals, linear equations and inequalities, simplifying and evaluating expressions, solutions of linear equations, linear inequalities, systems of linear equations, graphing linear equations, exponents and polynomials, factoring polynomials, rational expressions, roots and radicals, and quadratic equations

CRN	Dates	Days	Time	Location	Instructor
60005	1/13 - 5/26	T Th	6:00pm-7:50pm	ZOOM - ZOOM	Lacuesta, George

Transitioning to College

Transitioning to College

IHSS 300

This course is designed to help NOCE High School Diploma Program, ESL Academic Success, and all other NOCE students successfully transition to college. Topics presented will include identifying academic goals, designing an educational plan, utilizing the college processes (registration, financial aid, learning resources), and graduation. This course will include campus tours of several student resource centers.

CRN	Dates	Days	Time	Location	Instructor
61164	3/29 - 4/26	W	01:00pm-03:50pm	Anaheim Campus - 301	Torres, Anacany



Student Success Spotlight: Gonzalo Vasquez

Gonzalo Vasquez came to the United States from a small town in Guerrero, Mexico with a dream to get an American education. He enrolled in NOCE's High School Diploma Program and had instrumental support from his counselor Gary Jimenez who helped to keep him on track with his student educational plan. While enrolled in the program, Gonzalo took advantage of the tuition-free U.S. citizenship prep classes which eventually led him to successfully become a naturalized American citizen! In 2022, Gonzalo graduated with his diploma from NOCE! When asked how NOCE has helped him, he excitedly said "a lot, a lot!" NOCE next prepared him to transition to Cypress College where he strives to one day earn an associate degree in film studies. Congratulations, Gonzalo!

Basic Skills Academic Learning Center and Resources

In-person individualized, and group academic tutoring is available to support the learning experience.

NOCE Learning Center

ABED 105

Designed for students from beginning levels of reading and mathematics to those needing support for higher education. Through the use of small-group instruction, computer-aided instruction, audio books and workbooks, students will become better readers, writers and thinkers. Students may also improve their skills in mathematics. Skills attained can be used for personal growth, job advancement or for entry into other educational programs. Learning plans will be developed for each students based on student goals, needs and learning style.

CRN	Dates	Days	Time	Location	Instructor
60012	1/13 - 5/27	MTWTh	08:30am-11:50am	Cypress Tech Ed 2 - 209	Lee, Kevin
	1/13 - 5/27	MTWTh	12:00pmm-2:45pm	Cypress Tech Ed 2 - 209	Wing, Lisa
<i>Optional In-person Workshops:</i>					
• Computer Reading: Monday - Thursday, 12 p.m. - 1 p.m.					
• English Conversation Circle - Monday - Thursday, 1 p.m. to 2 p.m.					
60091	1/13 - 5/27	MTWTh	08:30am-02:45pm	Anaheim Campus - 140	Carey, Jennifer
	1/13 - 5/27	MWTh	02:45pm-06:50pm	Anaheim Campus - 140	Balasi, Lillana
	1/13 - 5/27	T	02:45pm-06:50pm	Anaheim Campus - 140	Tseng, Anh
<i>Optional In-person Workshops:</i>					
• Reading, Pronunciation, and Phonics: Monday - Thursday, 10 a.m. - 10:45 a.m.					
• English Conversation Circle - Monday - Thursday, 12 p.m. to 12:45 p.m.					

Supervised Tutoring

ABED 102

This self-paced, open-entry/open exit noncredit course provides individualized and growth activities designed to include a learning style assessment and follow-up, assistance with acquiring study skills, and guidance in completing coursework. Designed to help students achieve outcomes related to specific courses for which tutoring is sought.

Students may schedule their online appointment by vising noce.edu/student-services/tutoring



CAREER TECHNICAL EDUCATION

Earn a certificate.

Prepare for a thriving career.

Increase your earning potential.

Explore noce.edu/careers.



Need Translated Instructions?

¿Necesita instrucciones traducidas?

Haga clic en "Traducir" en la esquina superior derecha de la página. Seleccione su idioma para traducir el sitio. O llame al **714.808.4679** para obtener más ayuda.

Program Overview

What Is Your Career Goal?

Career Technical Education (CTE) offers dynamic programs to meet the critical needs of Orange County students, industries, and communities. NOCE short-term and tuition-free vocational training allows entrance into high-demand industries and builds foundational skills to place students on the pathway to success. More info at noce.edu/careers.

Choose Your Path: Certificate Programs at NOCE

- Administrative Professional
- Bookkeeping
- Braille Transcribing
- Business Information Worker I & II
- Classroom Essentials for Program Success
- Early Childhood Education
- Electrical Technology
- Funeral Service Assistant
- Management
- Medical Assistant
- Personal Care Aide
- Pharmacy Technician
- Quality Assurance Management for Medical Devices

Career Pathways for English Language Learners

In partnership with our English as a Second Language (ESL) Program, we offer Business Information Worker and Personal Care Aide classes with two instructors. Students learn career-specific language and job skills to prepare them for rewarding entry-level positions. For more information, visit noce.edu/esl/careerpathways.

Resources to Help You Thrive

NOCE provides many support services to help CTE students thrive in their studies, stay on track through their educational journey, and excel after graduation. More info at noce.edu/career-services.

Career Skills and Resource Lab

Enroll in our in-person or online labs. We offer resources and strategies to launch your career.

- Career Launch Academy and free access to LinkedIn Learning.
- Workshops on 21st Century Skills, job preparation, career exploration, and more.
- Resume and cover letter development, job search, and interviewing techniques.
- In-person lab offers access to computers and internet.
- Free online job board - NOCECareerConnect.



Ready to Get Started?

Once you've applied to NOCE...

1. Complete "General Orientation" in myGateway at noce.edu/mygateway. Pharmacy Technician students need to instead take the "NOCE CTE Pharmacy Technician Program" orientation. Check out noce.edu/orientation for details.
2. Register for classes online using myGateway at noce.edu/mygateway. Check out noce.edu/registration-info for details.
3. Meet with a counselor: **714.808.4682** or counseling@noce.edu.
4. Attend class
 - Online by logging into Canvas at noce.edu/canvas on the start date listed in the class schedule.
 - In person on the date, time, and at the location listed in the class schedule.
 - Attendance on first day of class is **MANDATORY** to secure your place in class. For more information on attendance, drops, and waitlist policy, please visit noce.edu/academic-policies.



Have Questions?

Need Registration Help?

714.808.4679 or starhelp@noce.edu

Info Sessions

Want to learn more about the various CTE certificate programs such as required courses, program length, types of careers, and steps to register? Join us on Zoom: noce.edu/info-sessions.

★ NOTE

As of January 1, 2023, the COVID-19 vaccination is no longer required, but is still strongly recommended for all persons visiting NOCCCD campuses. More information at noce.edu/vaccine.

Business/Office Technology

This series of certificate options to prepare students for entry-level to advanced office and administrative support in a variety of job positions, including general office clerks, retail salespersons, customer service representatives, receptionists, and information clerks. Training includes hands-on courses in customer service, information management, and using computers. Complete the entire program to reach a higher level in your administrative skills.

Computer Basics

OTEC 091

Designed for those who know nothing or very little about computers. Builds computer technology understanding, makes one a better consumer of computers and products, and explores operation systems, software and hardware. Provides foundation for other NOCE computer course.

CRN	Dates	Days	Time	Location	Instructor
61167	1/24 - 2/14	T	09:00am-11:50am	Anaheim Campus - 405	Moreno-Herrera, Enrique
61578	2/21 - 3/14	T	09:00am-11:50am	Anaheim Campus - 405	Moreno-Herrera, Enrique
61580	4/4 - 4/25	T	09:00am-11:50am	Anaheim Campus - 405	Moreno-Herrera, Enrique

Software Essentials

OTEC 092

Learn the beginning basics of MS Word, MS Excel, MS PowerPoint, and MS Access in one class. This class serves as a foundation for OTEC courses.

CRN	Dates	Days	Time	Location	Instructor
61168	1/26 - 2/16	Th	09:00am-11:50am	Anaheim Campus - 405	Moreno-Herrera, Enrique
61579	2/23 - 3/16	Th	09:00am-11:50am	Anaheim Campus - 405	Moreno-Herrera, Enrique
61581	4/6 - 4/27	Th	09:00am-11:50am	Anaheim Campus - 405	Moreno-Herrera, Enrique



Office Essentials

OTEC 100

A course that prepares students for an entry-level position in an office. Includes units on the office environment, becoming a professional, work ethics, and several elements of customer service. Textbook Required.

CRN	Dates	Days	Time	Location	Instructor
60501	1/13 - 3/10	Remote	Remote	ONLINE - ONLINE	McClurkin, Tina
61595	3/27 - 5/19	Remote	Remote	ONLINE - ONLINE	McClurkin, Tina

Microsoft Outlook Fundamentals

OTEC 105

This course introduces students to Microsoft Outlook. Students will learn how to organize and manage emails, schedule appointments, create and manage task and contact records, and customize Outlook.

CRN	Dates	Days	Time	Location	Instructor
60502	2/13 - 3/10	Remote	Remote	ONLINE - ONLINE	Loayza, Santiago
60656	4/17 - 5/26	Remote	Remote	ONLINE - ONLINE	Loayza, Santiago

Business Math for Office Technology

OTEC 110

Provides coverage of personal and business-related mathematics as well as reviewing the basic operations of arithmetic.

CRN	Dates	Days	Time	Location	Instructor
60503	1/13 - 3/10	Remote	Remote	ONLINE - ONLINE	Prey, Maria Josephine
61590	3/27 - 5/19	Remote	Remote	ONLINE - ONLINE	Prey, Maria Josephine

Computer Concepts and Applications I

OTEC 210

This is the first course in a series of three courses that serves as a foundation for working in the office environment and focuses on the entry-level skills students need to succeed in the workforce. Part I introduces students to fundamental workforce skills in computers and information processing; hardware; system software; networks, security, and privacy; troubleshooting and maintenance; and application software. The course series will help prepare students for the Microsoft Office Specialist (MOS) and IC3 Digital Literacy certifications. Textbook Requirement.

CRN	Dates	Days	Time	Location	Instructor
60504	1/13 - 3/17	Remote	Remote	ONLINE - ONLINE	Kretschmar, Judith
60653	3/27 - 5/26	Remote	Remote	ONLINE - ONLINE	Kretschmar, Judith

Computer Concepts and Applications II

OTEC 211

Prerequisite: OTEC 210 Computer Concepts and Applications I and COMP 685 Beginning Keyboarding or Pass the Keyboarding Challenge Exam at a rate of 35 net words a minute with five or fewer errors per minute on a 5-minute timed writing. This is the second course in a series of three courses that serves as a foundation for working in the office environment and focuses on the entry-level skills students need to succeed in the workforce. Part II introduces students to fundamental workforce skills in the internet, digital ethics and awareness, cloud computing, Windows, Microsoft Word, and Microsoft Excel. The course series will help prepare students for the Microsoft Office Specialist (MOS) and IC3 Digital Literacy certifications.

CRN	Dates	Days	Time	Location	Instructor
60505	2/6 - 5/26	Remote	Remote	ONLINE - ONLINE	Sedrak, Afraim

Computer Concepts and Applications II A

OTEC 200

Advisory: OTEC 200 is designed for individuals wanting to learn/enhance specific skills. If you are interested in the Business Information Worker certificate, OTEC 211 Computer Concepts and Applications III is recommended. This course is designed for students who wish to focus on specific areas within the Computer Concepts and Applications II. Part II A introduces students to fundamental workforce skills on the Internet, digital ethics and awareness, cloud computing and Windows.

CRN	Dates	Days	Time	Location	Instructor
61582	1/23 - 3/17	Remote	Remote	ONLINE - ONLINE	Ahmed, Md Riffat

Computer Concepts and Applications II B

OTEC 201

Advisory: OTEC 201 is designed for individuals wanting to learn/enhance specific skills. If you are interested in the Business Information Worker certificate, OTEC 211 Computer Concepts and Applications II is recommended. This course is designed for students who wish to focus on specific areas within the Computer Concepts and Applications II. Part II B introduces students to Microsoft Word.

CRN	Dates	Days	Time	Location	Instructor
61583	1/23 - 3/17	Remote	Remote	ONLINE - ONLINE	Ahmed, Md Riffat

Computer Concepts and Applications II C

OTEC 202

Advisory: OTEC 202 is designed for individuals wanting to learn/enhance specific skills. If you are interested in the Business Information Worker certificate, OTEC 211 Computer Concepts and Applications II is recommended. This course is designed for students who wish to focus on specific areas within the Computer Concepts and Applications II. Part II C introduces students to fundamental workforce skills in Microsoft Excel.

CRN	Dates	Days	Time	Location	Instructor
61597	1/23 - 3/17	Remote	Remote	ONLINE - ONLINE	Sedrak, Afraim

Computer Concepts and Applications III

OTEC 212

Prerequisite: OTEC 211 Computer Concepts and Applications II. This is the third course in a series of three courses that serves as a foundation for working in the office environment and focuses on the entry-level skills students need to succeed in the workforce. Part III builds on the foundations learned in parts I and II and introduces students to fundamental workforce skills in Microsoft Access and Microsoft PowerPoint. The course series will help prepare students for the Microsoft Office Specialist (MOS) and IC3 Digital Literacy certifications.

CRN	Dates	Days	Time	Location	Instructor
60506	3/27 - 5/26	Remote	Remote	ONLINE - ONLINE	Sedrak, Afraim

Computer Concepts and Applications III A**OTEC 205**

Advisory: OTEC 205 is designed for individuals wanting to learn/enhance specific skills. If you are interested in the Business Information Worker certificate, OTEC 212 Computer Concepts and Applications III is recommended. This course serves as a foundation for working in the office environment and focuses on the entry level skills students need to succeed in the workplace. Part III A introduces students to fundamental workforce skills in Microsoft Access. The course will help prepare students for the Microsoft Office Specialist (MOS) and IC3 Digital Literacy certifications.

CRN	Dates	Days	Time	Location	Instructor
61586	1/13 - 2/24	Remote	Remote	ONLINE - ONLINE	Sedrak, Afraim

Computer Concepts and Applications III B**OTEC 206**

Advisory: OTEC 206 is designed for individuals wanting to learn/enhance specific skills. If you are interested in the Business Information Worker certificate, OTEC 212 Computer Concepts and Applications III is recommended. This course serves as a foundation for working in the office environment and focuses on the entry level skills students need to succeed in the workplace. Part III B introduces students to fundamental workforce skills in Microsoft PowerPoint. The course series will help prepare students for the Microsoft Office Specialist (MOS) and IC3 Digital Literacy certifications.

CRN	Dates	Days	Time	Location	Instructor
61598	4/18 - 5/23	T	06:00pm-08:50pm	Anaheim Campus - 403	Loayza, Santiago
61587	1/13 - 2/24	Remote	Remote	ONLINE - ONLINE	Sedrak, Afraim
61588	2/27 - 4/14	Remote	Remote	ONLINE - ONLINE	Loayza, Santiago

MS Office Integrated Projects**OTEC 225**

Prerequisite: OTEC 211 Computer Concepts and Applications II and OTEC 212 Computer Concepts and Applications III. This course is designed to apply knowledge and skills gained from Computer Concepts and Applications II and III to the business environment by giving students the opportunity to work in real world simulations. This is the capstone course for those students completing the Administrative Professional certificate program.

CRN	Dates	Days	Time	Location	Instructor
61589	3/27 - 5/26	Remote	Remote	ONLINE - ONLINE	Sedrak, Afraim

Bookkeeping

This program is designed to prepare students for a career as an entry-level bookkeeper or provide the necessary knowledge of basic bookkeeping functions for business owners or entrepreneurs. Bookkeepers maintain their employers' financial records by using accounting software and other tools. As they play such a significant role in determining their companies' success, employers want only the most highly trained and ethical bookkeepers.

Accounting Fundamentals for Bookkeepers**BUSA 100**

Accounting fundamentals covers foundational topics, such as accounting for purchases, analyzing business transactions, and how accounting acts as the language of business. Upon completion, students will understand the basics of accounting fundamentals in preparation for the bookkeeping certification exam.

CRN	Dates	Days	Time	Location	Instructor
61169	1/13 - 3/17	Remote	Remote	ONLINE - ONLINE	Dunne, Catherine
61535	1/13 - 3/17	Remote	Remote	ONLINE - ONLINE	Dunne, Catherine

Accounting Principles for Bookkeepers**BUSA 101**

Prerequisite BUSA 100 Accounting Fundamentals for Bookkeepers. This course covers accounting for partnerships, long-term bonds, and the statement of cash flows, among other pieces of vital bookkeeping knowledge. The course prepares students for part two of the certification exam - Accounting Principles.

CRN	Dates	Days	Time	Location	Instructor
61170	3/27 - 5/26	Remote	Remote	ONLINE - ONLINE	Dunne, Catherine

Payroll Fundamentals for Bookkeepers

BUSA 102

Prerequisite BUSA 100 Accounting Fundamentals for Bookkeepers. Payroll fundamentals covers foundational topics, such as accounting for computing wages, social security, taxes, withholdings, and analyzing and journalizing payroll transactions. Upon completion students will understand the basics of payroll fundamentals in preparation for the bookkeeping certification exam.

CRN	Dates	Days	Time	Location	Instructor
61171	3/27 - 5/26	Remote	Remote	ONLINE - ONLINE	Dunne, Catherine

Quickbooks Fundamentals for Financial Office Applications

COMP 650

Teaches students the basics of using the QuickBooks software to develop customized financial application for business. The course covers special techniques for reducing data entry time, eliminating errors and getting consistent results. Upon completion, students will understand the basics of QuickBooks to simplify financial tasks.

CRN	Dates	Days	Time	Location	Instructor
60492	1/13 - 3/17	Remote	Remote	ONLINE - ONLINE	Teipe, William



Career Skills and Resources

Career Skills and Resource Lab

WFPR 100

Free, flexible scheduling to complete and receive help on homework and training on computer, industry related and employability skills.

CRN	Dates	Days	Time	Location	Instructor
61223	1/13 - 5/25	MTWTh	10:00am--06:00pm	Anaheim Campus - 606	Staff

Virtual Career Skills and Resource Lab

WFPR 101

Lab designed for online students to have access to seminars, assistance, and resources related to Career Technical Education and/or employment skills.

CRN	Dates	Days	Time	Location	Instructor
60717	1/13 - 3/17	Remote	Remote	ONLINE - ONLINE	McClurkin, Tina
<i>Required Synchronous Zoom Meeting: Friday, 1/13 from 12:15pm-12:45pm.</i>					
60719	3/27 - 5/26	Remote	Remote	ONLINE - ONLINE	Teipe, William

Build Your Career

WFPR 105

Ready to get to work? This course will help you launch your career through learning how to step out of your comfort zone, network, build communication skills, explore career options and land the jobs and internships you want.

CRN	Dates	Days	Time	Location	Instructor
61594	2/27 - 4/14	Remote	Remote	ONLINE - ONLINE	McClurkin, Tina
61596	4/17 - 5/26	Remote	Remote	ONLINE - ONLINE	McClurkin, Tina
<i>Required Synchronous Zoom Meeting Dates/Times: Weekly on Tuesday's from 9am-10am.</i>					

Computer - Keyboarding

Computer Keyboarding - Beginning

COMP 685

Stop hunting and pecking at the keyboard with this short course. Learn the keyboard layout to build speed and accuracy. Course covers proper technique at the computer keyboard as well as 10-key keyboarding. Textbook Required.

CRN	Dates	Days	Time	Location	Instructor
60649	3/28 - 5/23	T	09:00am-12:50pm	Anaheim Campus - 403	Prey, Maria Josephine
60323	1/13 - 3/17	Remote	Remote	ONLINE - ONLINE	Casper, Judith
	<i>Students required to perform synchronous assessment sessions with instructor via Zoom. Dates/Times to be arranged.</i>				
60645	1/13 - 3/17	Remote	Remote	ONLINE - ONLINE	Prey, Maria Josephine
	<i>Students required to perform synchronous assessment sessions with instructor via Zoom. Dates/Times to be arranged.</i>				
60648	1/13 - 3/17	Remote	Remote	ONLINE - ONLINE	Prey, Maria Josephine
	<i>Students required to perform synchronous assessment sessions with instructor via Zoom. Dates/Times to be arranged.</i>				
60650	1/13 - 3/17	Remote	Remote	ONLINE - ONLINE	Kretschmar, Judith
	<i>Students required to perform synchronous assessment sessions with instructor via Zoom. Dates/Times to be arranged.</i>				
60431	3/27 - 5/26	Remote	Remote	ONLINE - ONLINE	Casper, Judith
	<i>Students required to perform synchronous assessment sessions with instructor via Zoom. Dates/Times to be arranged.</i>				
60646	3/27 - 5/26	Remote	Remote	ONLINE - ONLINE	Prey, Maria Josephine
	<i>Students required to perform synchronous assessment sessions with instructor via Zoom. Dates/Times to be arranged.</i>				
60651	3/27 - 5/26	Remote	Remote	ONLINE - ONLINE	Kretschmar, Judith
	<i>Students required to perform synchronous assessment sessions with instructor via Zoom. Dates/Times to be arranged.</i>				

Computer Keyboarding - Mastery I

COMP 510

Prerequisite: The student must be able to key 35 net words per minute (nwpm) timed writing or have completed COMP 685 Computer Keyboarding - Beginning with a pass grade. The first of two keyboarding courses designed to increase keying speed and accuracy to employment levels of 50+ nwpm.

CRN	Dates	Days	Time	Location	Instructor
60324	1/13 - 3/10	Remote	Remote	ONLINE - ONLINE	Casper, Judith
	<i>Students required to perform synchronous assessment sessions with instructor via Zoom. Dates/Times to be arranged.</i>				
60658	3/27 - 5/19	Remote	Remote	ONLINE - ONLINE	Casper, Judith
	<i>Students required to perform synchronous assessment sessions with instructor via Zoom. Dates/Times to be arranged.</i>				

Computer Keyboarding - Mastery II

COMP 511

Prerequisite: The student must have completed COMP 510 Computer Keyboarding - Mastery I with a pass grade. The second of two keyboarding courses designed to increase and maintain keying speed and accuracy to employment levels of 50+ net words per minute (nwpm).

CRN	Dates	Days	Time	Location	Instructor
60325	1/13 - 3/10	Remote	Remote	ONLINE - ONLINE	Casper, Judith
	<i>Students required to perform synchronous assessment sessions with instructor via Zoom. Dates/Times to be arranged.</i>				
60659	3/27 - 5/19	Remote	Remote	ONLINE - ONLINE	Casper, Judith
	<i>Students required to perform synchronous assessment sessions with instructor via Zoom. Dates/Times to be arranged.</i>				

Computer - Software

NOCE offers a variety of noncredit computer classes to help students develop computer skills.

Windows Operating Systems - Introduction

MS 104

Learn the newest Windows operating system; includes desktop and file management, security, adding hardware and software, personalizing Windows XP, making connections and communicating with other people.

CRN	Dates	Days	Time	Location	Instructor
61165	3/30 - 5/25	Th	06:00pm-09:50pm	Anaheim Campus - 405	Ahmed, Md Riffat
60660	1/13 - 3/17	Remote	Remote	ONLINE - ONLINE	Ahmed, Md Riffat

Microsoft Office - Overview

MS 160

Advisory: Knowledge of Windows and keyboarding. Learn the basics of Word, Excel, PowerPoint and Access in one class. Topics include document formatting, working with graphics, basic formulas, queries and reports. This class serves as a foundation for other MS Office Courses.

CRN	Dates	Days	Time	Location	Instructor
60500	1/13 - 3/17	Remote	Remote	ONLINE - ONLINE	Kretschmar, Judith
60661	3/27 - 5/26	Remote	Remote	HYBRID	Kretschmar, Judith
	4/5 - 5/17	W	11:00am-12:50pm	Anaheim Campus - 405	Kretschmar, Judith

Required In-Person Dates/Times: Wednesday's - Apr 5, Apr 26, and May 17 from 11am-12:50pm

Microsoft Word - Introduction

MS 144

Advisory: Introduction to Computers, Introduction to Windows or equivalent. Provides a basic working knowledge of Word. Covers topics such as formatting with fonts, paragraph alignment, indents, margins, inserting clip art bullets and numbering, columns and tables.

CRN	Dates	Days	Time	Location	Instructor
60499	1/18 - 3/15	W	06:00pm-09:50pm	Anaheim Campus - 405	Ahmed, Md Riffat

Microsoft Word - Intermediate

MS 134

Advisory: COMP 100 Computer - Introduction, MS 104 Window Operating Systems - Introduction, MS 144 Microsoft Word - Introduction or equivalent. This continuing course covers features such as mail merging, styles and templates, large documents and WordArt. Textbook purchase may be required at first class.

CRN	Dates	Days	Time	Location	Instructor
60643	3/29 - 5/24	W	06:00pm-09:50pm	Anaheim Campus - 405	Ahmed, Md Riffat

Microsoft Excel - Introduction

MS 105

Advisory: Knowledge of Windows. Provides a basic working knowledge of this popular spreadsheet program. Covers topics such as formulas, functions, and charting.

CRN	Dates	Days	Time	Location	Instructor
60497	1/17 - 3/14	T	06:00pm-09:50pm	Anaheim Campus - 405	DeBiase, Vincent

Microsoft Excel - Power-User Skills

MS 165

Advisory: MS 105 Microsoft Excel - Introduction or equivalent. This course is for people who are comfortable using MS Excel and who want to develop "power skills". Topics include computational techniques (defining names, nested IF functions, summarizing data), using Excel's database tools (tables, database operations, lookup functions), and expert skills (conditional formatting, macros). Also covered are advanced formatting techniques and shortcuts for accelerating productivity.

CRN	Dates	Days	Time	Location	Instructor
61166	3/28 - 5/23	T	06:00pm-09:50pm	Anaheim Campus - 405	DeBiase, Vincent

Microsoft Publisher - Introduction

MS 143

Advisory: Recommended proficiency in COMP 100 Computers - Introduction and MS 104 Windows Operating Systems - Introduction. Provides a basic working knowledge of this popular desktop publishing program. Covers topics such as flyers, newsletters, and business cards.

CRN	Dates	Days	Time	Location	Instructor
60642	1/17 - 3/14	T	06:00pm-09:50pm	Anaheim Campus - 403	Loayza, Santiago
61591	3/27 - 5/26	Remote	Remote	ONLINE - ONLINE	Loayza, Santiago

Early Childhood Development

NOCE's Early Childhood Education (ECE) Certificate Program provides the beginning steps to prepare for your new career. The ECE Program offers four certificate options focusing on childcare, educational support, and the management of childcare programs in a variety of private facilities. Complete the program to earn a certificate and begin your childcare career.

Early Childhood Development

ECED 100

An introduction to the developmental stages of children from prenatal to middle childhood with emphasis on the physical, cognitive, language and social/emotional milestones. Application of developmental and learning theories addressed. This course is part of a program approved by the California Department of Social Services for employment in private facilities.

CRN	Dates	Days	Time	Location	Instructor
61173	1/13 - 3/17	Remote	Remote	ONLINE - ONLINE	Hill-West, Jami
<i>Required Synchronous Zoom Meetings: 1/17, 2/13, and 3/6 from 5:00pm-6:30pm</i>					
61174	3/27 - 5/26	Remote	Remote	ONLINE - ONLINE	Hill-West, Jami
<i>Required Synchronous Zoom Meetings: 3/27, 4/24, 5/15 from 5:00pm-6:30pm</i>					

Early Childhood Education: Principles and Practice

ECED 110

Course examines the history, basic principles, and philosophies of various types of early childhood programs, emphasizing the role of the adult and characteristics of quality programs. This course is part of a program approved by the California Department of Social Services, Community Care Licensing, for employment in private facilities only. Textbook required. This course is part of a program approved by the California Department of Social Services for employment in private facilities.

CRN	Dates	Days	Time	Location	Instructor
61177	1/13 - 3/17	Remote	Remote	ONLINE - ONLINE	Sueng, Suchen
<i>Optional Synchronous Zoom Meetings: 1/18, 2/1, 2/15 and 3/1 from 6:00pm-8:00pm</i>					

Child Health and Safety

ECED 115

For teachers and directors of pre-schools, this course will focus on the skills and knowledge needed for developing emergency plans and responding to health and safety issues in the classroom. Textbook required. This course is part of a program approved by the California Department of Social Services for employment in private facilities.

CRN	Dates	Days	Time	Location	Instructor
61178	3/27 - 5/26	Remote	Remote	ONLINE - ONLINE	Sueng, Suchen
<i>Optional Synchronous Zoom Meetings: 3/28, 4/11, 4/25, and 5/9 from 7:00pm-8:00pm</i>					

Language Arts and Literacy in Early Childhood

ECED 215

This course examines the teacher's role in promoting and facilitating children's emerging literacy and language development through the use of storytelling, books, songs, flannel board stories and puppetry. This course is part of a program approved by the California Department of Social Services, for employment in a private facility.

CRN	Dates	Days	Time	Location	Instructor
61182	3/27 - 5/26	Remote	Remote	ONLINE - ONLINE	Hill-West, Jami
<i>Required Synchronous Zoom Meeting: 3/27 from 6:00pm-7:00pm</i>					

Family and Community Relationships

ECED 105

Examination of the sociological relationships between family and society; institutional, racial, social, and economical factors affecting the family and the child. Textbook required. This course is part of a program approved by the California Department of Social Services for employment in private facilities.

CRN	Dates	Days	Time	Location	Instructor
61175	1/13 - 3/17	Remote	Remote	ONLINE - ONLINE	Sueng, Suchen
<i>Optional Synchronous Zoom Meetings: 1/17, 1/31, 2/14, and 2/28 from 5:30pm-6:30pm</i>					
61176	3/27 - 5/26	Remote	Remote	ONLINE - ONLINE	Sueng, Suchen
<i>Optional Synchronous Zoom Meetings: 3/28, 4/11, 4/25, and 5/9 from 5:30pm-6:30pm</i>					

Curriculum for Early Childhood Education, Introduction **ECED 120**

Prerequisite: ECED 100: Early Childhood Development. This course provides the foundation for curriculum planning, implementation, observation, assessment and evaluation. Emphasis includes modalities, learning styles, environments, activities, schedules, routines and adaptations to facilitate learning for all children. This course is part of a program approved by the California Department of Social Services for employment in private facilities. Textbook required. This course is part of a program approved by the California Department of Social Services for employment in private facilities.

CRN	Dates	Days	Time	Location	Instructor
61179	3/27 - 5/26	Remote	Remote	ONLINE - ONLINE	Hill-West, Jami
<i>Required Synchronous Zoom Meetings: 3/29, 4/26, 5/17 from 5:00pm-6:30pm</i>					

Children with Special Needs **ECED 205**

This course offers a broad study of children with special needs and early childhood education as it relates to inclusion. This course covers federal and state laws and regulations, terminology and definitions, appropriate practices and intervention. This course is part of a program approved by Department of Social Services, Community Care Licensing. This course is part of a program approved by the California Department of Social Services for employment in private facilities.

CRN	Dates	Days	Time	Location	Instructor
61533	1/13 - 3/17	Remote	Remote	ONLINE - ONLINE	Sueng, Suchen
<i>Optional Synchronous Zoom Meetings: 1/17, 1/31, 2/14, and 2/28 from 7:00pm-8:00pm</i>					

Infant-Toddler Care and Education **ECED 210**

This course explores the theories, principles and practices of an infant/toddler program. Content includes respectful, responsive care giving; licensing and regulation issues; and enriching, safe, healthy developmentally appropriate environments. This course is part of a program approved by the California Department of Social Services for employment in private facilities.

CRN	Dates	Days	Time	Location	Instructor
61180	1/13 - 3/17	Remote	Remote	ONLINE - ONLINE	Hill-West, Jami
<i>Required Synchronous Zoom Meetings: 1/18, 2/15, and 3/8 from 5:00pm-6:30pm</i>					

Early Childhood Education: Music and Movement **ECED 225**

Explores areas of music and movement appropriate to a child's development through participating and experimenting. Textbook Required. This course is part of a program approved by the California Department of Social Services for employment in private facilities.

CRN	Dates	Days	Time	Location	Instructor
61534	1/13 - 3/17	Remote	Remote	ONLINE - ONLINE	Hill-West, Jami
<i>Required Synchronous Zoom Meetings: 1/13 from 6:00pm-7:00pm</i>					

Child Care Supervision and Administration **ECED 400**

Prerequisite: ECED 100 Early Childhood Development, and ECED 105 Family Community Relations, and ECED 110 ECE Program Principles and Practice, and ECED 115 Child Health and Safety, and ECED 120 Curriculum for Early Childhood Education, Introduction. This course covers the laws and regulations to operate a childcare center. Upon completion, the student will have learned business and management skills, health and safety, and parent/child relationship. This course is part of a program approved by the California Department of Social Services for employment in private facilities.

CRN	Dates	Days	Time	Location	Instructor
61181	3/27 - 5/26	Remote	Remote	ONLINE - ONLINE	Sueng, Suchen
<i>Optional Synchronous Zoom Meetings: 3/29, 4/12, 4/26, and 5/10 from 6:00pm-8:00pm</i>					

Electrical Technology

Prepare for a career in the electrical field with training at NOCE. Our Electrical Technology (ET) Certificate offers practical training to install, maintain, and repair electrical equipment and systems. The ET Certificate Program prepares students for entry-level employment in numerous electrical and electrical-related trades. The program integrates electrical theory with a hands-on application where students receive practical training to develop the foundational skills necessary to install, maintain, and repair electrical equipment and systems in residential, commercial, and industrial buildings.

Electrical Trades Mathematics II

ELET 176

Prerequisite: ELET 175 Electrical Trades Mathematics I. This course will present basic algebra and trigonometry and their application to the solution of practical problems in the electrical construction field with an emphasis on trigonometric solutions to alternating current electrical theory.

CRN	Dates	Days	Time	Location	Instructor
61592	1/18 - 5/24	W	06:00pm-08:50pm	Anaheim Campus - 504	Massia, Freddy

National Electrical Code - Residential

ELET 190

This course is an introduction to the National Electrical Code. The interpretation of electrical wiring diagrams, material use, installation methods and calculations of electrical loads to size feeders, branch circuits and conductors as they relate to residential occupancies is included.

CRN	Dates	Days	Time	Location	Instructor
61593	1/19 - 5/25	Th	06:00pm-08:50pm	Anaheim Campus	Faessel, Stephen

Blueprint Reading Basics

ELET 196

This course uses a fundamental approach to blueprint reading. Students will become familiar with basic blueprint terms, components, and symbols. Students will also learn different type(s) of blueprint drawings (civil, architectural, structural, mechanical, plumbing/piping, and eleCenterical) and how to interpret and use drawing dimensions.

CRN	Dates	Days	Time	Location	Instructor
61185	1/17 - 5/23	T	06:00pm-08:50pm	Anaheim Campus - 504	Massia, Freddy

Funeral Service Assistant

Prepare for a career in the funeral services field with training at NOCE. If you enjoy talking to others and looking for ways to help people, consider the Funeral Service Assistant Program. It provides an overview of the funeral service industry and offers training on how to start as a funeral assistant. The program is a pathway for interested students to transition to Cypress College's mortuary science associate and baccalaureate degrees.

Computers in Healthcare and EHR, Introduction

MEDA 101

Prerequisite: COMP 685 Computer Keyboarding - Beginning. This course is an introduction to computers for individuals entering the health care field. This course provides a general introduction to computer literacy and information technology for health care students. Students will learn and exercise the practical use of EHR in administrative roles within the allied health field. Textbook Required.

CRN	Dates	Days	Time	Location	Instructor
60617	1/13 - 3/17	Remote	Remote	ONLINE - ONLINE	Kane, Raenie
60618	3/27 - 5/26	Remote	Remote	ONLINE - ONLINE	Kane, Raenie

Funeral Service Practices and Procedures I

FSRV 125

Prerequisite: FSRV 100 Introduction to Funeral Service Practice. This course introduces students to the sociology of funeral service practice. It is designed to develop the necessary skills for arranging religious funeral ceremonies, conducting funeral and memorial services, and assisting in the disposition of human remains including cremation and scattering. Funeral service merchandise options are also covered. Textbook Required.

CRN	Dates	Days	Time	Location	Instructor
60633	1/13 - 3/17	Remote	Remote	ONLINE - ONLINE	Ojeda, Gary

Funeral Service Operations					FSRV 120
Prerequisite: FSRV 100 Introduction to Funeral Service Practice. This course introduces students to funeral service practices and procedures in preparation for entry-level positions in the funeral home. These include funeral service assistant, receptionist, mortuary representative, transfer personnel, funeral director assistant, and pre-need salesperson. Students review historical funeral service practices, funeral service price lists, and service arrangements. Textbook Required.					

CRN	Dates	Days	Time	Location	Instructor
60634	1/13 - 3/17	Remote	Remote	ONLINE - ONLINE	Ojeda, Gary

Funeral Service Practices and Procedures II					FSRV 126
Prerequisite: FSRV 125 Service Practices and Procedures I. This course provides students with experience related to administrative and managerial funeral directing. Students will explore the necessary skills required to operate within the funeral home, including advertising and public relations, marketing and merchandising, and compliance with applicable laws, rules, and regulations. Textbook Required.					

CRN	Dates	Days	Time	Location	Instructor
60635	3/27 - 5/26	Remote	Remote	ONLINE - ONLINE	Ojeda, Gary

Management					
NOCE's Management Certificate trains students for a promotion in management. The program will prepare students for first-line supervisory or management positions. Students will learn management principles and develop basic skills in decision-making, problem-solving, planning, organizing, speaking, and writing. The course sequence builds a knowledge base to enhance effectiveness on the job through topics such as leadership development, business law, finance, negotiations, marketing, and more.					

Elements of Supervision					BMGR 410
Provides instruction in communication, problem solving, team building and leadership. Designed for managers in both public and nonprofit organizations.					

CRN	Dates	Days	Time	Location	Instructor
60541	1/13 - 2/24	Remote	Remote	ONLINE - ONLINE	Baltazar, Ramon

Management Skills I					BMGR 412
This course provides an overview of the functions of the management process and its practical applications in a business environment. The course focuses on the planning process and organizing skills, including decision-making, strategic planning, delegating and staffing. Students will learn management principles that provide basic guidelines for supervisory decisions and actions.					

CRN	Dates	Days	Time	Location	Instructor
60540	1/13 - 2/24	Remote	Remote	ONLINE - ONLINE	Baltazar, Ramon

Written Communications for Business					BMGR 415
Provides extensive hands-on experience with all types of written business communications including letters, resumes, cover letters, memos, and reports.					

CRN	Dates	Days	Time	Location	Instructor
60542	1/13 - 2/24	Remote	Remote	ONLINE - ONLINE	Dunne, Catherine

Finance for the Non-Financial Manager					BMGR 431
This course introduces students to the basics of business finance for the non-financial manager. Financial statements will be covered along with discussions on sales and expenses, assets and liabilities, budgeting and planning, and financial analysis.					

CRN	Dates	Days	Time	Location	Instructor
60550	4/17 - 5/26	Remote	Remote	ONLINE - ONLINE	Baltazar, Ramon

Management Skills II**BMGR 610**

This course focuses on developing management skills in working with individuals and teams to promote productivity, quality and innovation. Topics include employee performance appraisal, performance management, work groups, and the control process for keeping people, plans and programs on track.

CRN	Dates	Days	Time	Location	Instructor
60547	2/27 - 4/14	Remote	Remote	ONLINE - ONLINE	Baltazar, Ramon

Successful Negotiations**BMGR 421**

This course is designed to plan and achieve business objectives and effect change through effective negotiating tactics and strategies, discover the art of persuasion in an ethical, empathetic, and assertive way, and develop confidence to influence and overcome psychological barriers and biases to achieve better outcomes.

CRN	Dates	Days	Time	Location	Instructor
60548	2/27 - 4/14	Remote	Remote	ONLINE - ONLINE	Berry, Nera

Introduction to Employment Law**BMGR 423**

This course introduces the legal system, court structure, and laws governing the employer-employee relationship. It defines the employee status and common contracts, and examines unlawful practices by an employer, obligations of an employee, the principles of non-discrimination, harassment, labor laws, and the time limit to bring actions are also discussed.

CRN	Dates	Days	Time	Location	Instructor
61172	1/13 - 2/24	Remote	Remote	ONLINE - ONLINE	Berry, Nera

Understanding Business Contracts**BMGR 452**

This course is an overview of basic contract principles and explores the meaning and effect of common contracts clauses. Topics covered include the different types of contracts, defenses available to the enforcement of a contract, subsequent remedies for the breach of a contract, and alternatives in the absence of a contract.

CRN	Dates	Days	Time	Location	Instructor
60546	4/17 - 5/26	Remote	Remote	ONLINE - ONLINE	Berry, Nera

Marketing Principles**BMGR 430**

Introduces the student to the marketing principles of product, price, distribution and promotion in support of goods and services. The course will focus on real world application and current business case studies. The student will learn to apply marketing skills in the development of a marketing plan.

CRN	Dates	Days	Time	Location	Instructor
60549	4/17 - 5/26	Remote	Remote	ONLINE - ONLINE	Baltazar, Ramon

Effective Business Presentations**BMGR 417**

This course provides instruction and practice in business presentation skills. Students will learn techniques to enhance their ability to speak before any size group with more confidence and communicate their message effectively. Students are encouraged to participate in a video tape exercise for their own assessment of strengths and weaknesses.

CRN	Dates	Days	Time	Location	Instructor
60544	2/27 - 4/14	Remote	Remote	ONLINE - ONLINE	Baltazar, Ramon

Medical Assistant

NOCE's Medical Assistant Certificate provides the first steps to enter a new career. This program will prepare students for an entry-level position as a medical assistant in an administrative and/or a clinical setting. The program consists of courses that prepare students with the knowledge and skills needed to perform a medical assistant's tasks in healthcare settings.

Medical Terminology

MEDO 105

(Formerly MEOC 104)

This course introduces students to medical terminology in preparation for careers in the medical field. It covers the study of the basic elements of medical terms and the anatomy and physiology of the human body. It also covers different pathological conditions and procedures for their treatment.

CRN	Dates	Days	Time	Location	Instructor
60560	1/13 - 3/17	Remote	Remote	ONLINE - ONLINE	Smith, Fawn
60562	1/13 - 3/17	Remote	Remote	ONLINE - ONLINE	Tarango, Courtney
60561	3/27 - 5/26	Remote	Remote	ONLINE - ONLINE	Smith, Fawn
60850	3/27 - 5/26	Remote	Remote	ONLINE - ONLINE	Tarango, Courtney

Medical Assistant, Core Concepts

MEDA 100

Explores past history and current issues of healthcare; the health care field; the role of the Medical Assistant; ethics and law for medical assistants; customer service; communication/cultural competencies in healthcare; student success; math skills for healthcare; safety in healthcare; and job skills and the professional portfolio. Textbook Required.

CRN	Dates	Days	Time	Location	Instructor
60494	1/13 - 3/17	Remote	Remote	ONLINE - ONLINE	Tarango, Courtney
60614	1/13 - 3/17	Remote	Remote	ONLINE - ONLINE	Tarango, Courtney
60615	3/27 - 5/26	Remote	Remote	ONLINE - ONLINE	Tarango, Courtney
60616	3/27 - 5/26	Remote	Remote	ONLINE - ONLINE	Tarango, Courtney

Computers in Healthcare and EHR, Introduction

MEDA 101

Prerequisite: COMP 685 Computer Keyboarding - Beginning. This course is an introduction to computers for individuals entering the health care field. This course provides a general introduction to computer literacy and information technology for health care students. Students will learn and exercise the practical use of EHR in administrative roles within the allied health field. Textbook Required.

CRN	Dates	Days	Time	Location	Instructor
60617	1/13 - 3/17	Remote	Remote	ONLINE - ONLINE	Kane, Raenie
Optional Synchronous Zoom Meetings: Every Monday from 11:00am-12:00pm					
60618	3/27 - 5/26	Remote	Remote	ONLINE - ONLINE	Kane, Raenie
Optional Synchronous Zoom Meetings: Every Monday from 11:00am-12:00pm					

Medical Assistant Administrative

MEDA 110

Prerequisite: COMP 685 Computer Keyboarding - Beginning, and MEDA 100 Medical Assistant, Core Concepts, and MEDO 105 Medical Terminology. Co-requisite: MEDA 111 Medical Assistant Administrative Lab. This course introduces students to medical office procedures in preparation for entry-level positions in the administrative or reception area of a medical facility. Students review reception techniques, computers in the medical clinic, telecommunications, scheduling, medical record management, and written communications. Textbook Required.

CRN	Dates	Days	Time	Location	Instructor
60306	1/13 - 3/10	Remote	Remote	ONLINE - ONLINE	Bacon, Amy
60619	3/27 - 5/19	Remote	Remote	ONLINE - ONLINE	Bacon, Amy

Medical Assistant Administrative Lab**MEDA 111**

Prerequisite: COMP 685 Computer Keyboarding - Beginning, and MEDA 100 Medical Assistant, Core Concepts, and MEDO 105 Medical Terminology. Co-requisite: MEDA 110 Medical Assistant Administrative. This course introduces students to medical office procedures in preparation for entry-level positions in the administrative or reception area of a medical facility. Students review reception techniques, computers in the medical clinic, telecommunications, scheduling, medical record management, and written communications. Textbook Required.

CRN	Dates	Days	Time	Location	Instructor
60307	1/13 - 3/10	Remote	Remote	ONLINE - ONLINE	Bacon, Amy
60620	3/27 - 5/19	Remote	Remote	ONLINE - ONLINE	Bacon, Amy

Medical Assistant Electronic Health Records**MEDA 120**

Prerequisite: COMP 685 Computer Keyboarding - Beginning, and MEDA 100 Medical Assistant, Core Concepts, and MEDO 105 Medical Terminology, and MEOC 210 Introduction of Computers for Health Care Workers. Co-requisite: MEDA 121 Medical Assistant Electrical Health Records. This course introduces students to the fundamental concepts of working with Electronic Health Records (EHRs). Students will learn and exercise the practical use of EHR in administrative roles within the allied health field. Topics covered include: the history of EHR, EHR standards, patient charts, and EHR regulations. Textbook Required.

CRN	Dates	Days	Time	Location	Instructor
60621	2/27 - 4/14	Remote	Remote	ONLINE - ONLINE	Echolds, Nora
60622	4/17 - 5/26	Remote	Remote	ONLINE - ONLINE	Echolds, Nora

Medical Assistant Electronic Health Records Lab**MEDA 121**

Prerequisite: COMP 685 Computer Keyboarding - Beginning, and MEDO 105 Medical Terminology, and MEOC 210 Introduction of Computers for Health Care Workers. Co-requisite: MEDA 120 Medical Assistant Electronic Health Records. This course introduces students to the fundamental concepts of working with Electronic Health Records (EHRs). Students will practice setting up EHR features, creation and administration of patient charts, and using clinical administrative tools. Textbook Required.

CRN	Dates	Days	Time	Location	Instructor
60623	2/27 - 4/14	Remote	Remote	ONLINE - ONLINE	Echolds, Nora
60624	4/17 - 5/26	Remote	Remote	ONLINE - ONLINE	Echolds, Nora

Medical Assistant Financial Concepts**MEDA 130**

Prerequisite: COMP 685 Computer Keyboarding - Beginning, and MEDA 100 Medical Assistant, Core Concepts, and MEDO 105 Medical Terminology. Co-requisite: MEDA 131 Medical Assistant Financial Concepts Lab. This course discusses the theory of financial management for a medical assistant. Topics covered include medical insurance, medical coding, daily financial practices, billing and collections, and general accounting practices. Textbook Required.

CRN	Dates	Days	Time	Location	Instructor
60308	1/13 - 3/10	Remote	Remote	ONLINE - ONLINE	Bacon, Amy
60625	3/27 - 5/19	Remote	Remote	ONLINE - ONLINE	Bacon, Amy

Medical Assistant Financial Concepts Lab**MEDA 131**

Prerequisite: COMP 685 Computer Keyboarding - Beginning, and MEDO 105 Medical Terminology, and MEDA 100 Medical Assistant, Core Concepts. Co-requisite: MEDA 130 Medical Assistant Financial Concepts. This course develops the necessary skills for financial management for a medical assistant. Topics covered include medical insurance, medical coding, daily financial practices, billing and collections, and general accounting practices in a direct hands on, simulated environment. Textbook Required.

CRN	Dates	Days	Time	Location	Instructor
60309	1/13 - 3/10	Remote	Remote	ONLINE - ONLINE	Bacon, Amy
60626	3/27 - 5/19	Remote	Remote	ONLINE - ONLINE	Bacon, Amy

Medical Billing, Introduction

MEDA 140

Prerequisite: COMP 685 Computer Keyboarding - Beginning, and MEDA 101 Computers in Healthcare and EHR, Introduction or MEOC 210 Introduction of Computers for Health Care Workers. Co-requisite: MEDA 141 Medical Billing Lab, Introduction. An overview of outpatient medical insurance billing in preparing students for entry-level positions. Includes review of theory of data entry for private, PPO, Medicare, Medicaid/Medi-Cal, TRICARE/CHAMPUS and workers' compensation billing. Current CPT and ICD coding is also covered. Textbook Required.

CRN	Dates	Days	Time	Location	Instructor
60310	1/13 - 3/10	Remote	Remote	ONLINE - ONLINE	Echolds, Nora
60627	3/27 - 5/19	Remote	Remote	ONLINE - ONLINE	Echolds, Nora



Medical Billing Lab, Introduction

MEDA 141

Prerequisite: COMP 685 Computer Keyboarding - Beginning, and MEDA 101 Computers in Healthcare and EHR, or MEOC 210 Introduction of Computers for Health Care Workers. Co-requisite: MEDA 140 Medical Billing, Introduction. An overview of outpatient medical insurance billing in preparing students for entry-level positions. Includes practice of data entry for private, PPO, Medicare, Medicaid/Medi-Cal, TRICARE/CHAMPUS and workers' compensation billing. Current CPT and ICD coding is also covered. Textbook Required.

CRN	Dates	Days	Time	Location	Instructor
60311	1/13 - 3/10	Remote	Remote	ONLINE - ONLINE	Echolds, Nora
60628	3/27 - 5/19	Remote	Remote	ONLINE - ONLINE	Echolds, Nora

Medical Assistant Clinical Procedures Theory I

MEDA 200

Prerequisite: MEDO 105 Medical Terminology, and MEDA 100 Medical Assistant, Core Concepts. Co-requisite: MEDA 201 Medical Assistant Clinical Procedures Lab I. This course reviews the theory of clinical procedures. Students review performing exam room procedures, including medical asepsis, infection control, patient intake, vital signs, and assisting with physical examination, specialty exams, electrocardiograph, assisting physicians with minor surgical procedures, pharmacology, laboratory procedures, nutrition, patient education, diagnostic imaging, and urgent care and emergency procedures. Textbook Required.

CRN	Dates	Days	Time	Location	Instructor
60312	1/13 - 3/17	Remote	Remote	ONLINE - ONLINE	Kane, Raenie
<i>Optional Synchronous Zoom Meetings: Every Monday from 1:00pm-2:00pm</i>					
61186	3/27 - 5/26	Remote	Remote	ONLINE - ONLINE	Kane, Raenie
<i>Optional Synchronous Zoom Meetings: Every Monday from 1:00pm-2:00pm</i>					

Medical Assistant Clinical Procedures Lab I**MEDA 201**

Prerequisite: MEDO 105 Medical Terminology, and MEDA 100 Medical Assistant, Core Concepts. Co-requisite: MEDA 200 Medical Assistant Clinical Procedures Theory I. This course develops skills needed for students to work in a clinical environment. Students will have hands-on practice of the following skills: exam room procedures, medical asepsis, infection control, patient intake, vital signs, assisting with physical examination, specialty exams, electrocardiograph, public health education, assisting physicians with minor surgical procedures, pharmacology, laboratory procedures, nutrition, patient education, diagnostic imaging, and urgent care and emergency procedures. Textbook Required.

CRN	Dates	Days	Time	Location	Instructor
60629	1/13 - 3/17	Remote	Remote	HYBRID	Kane, Raenie
	2/21 - 3/7	T	09:00am-12:00pm	Anaheim Campus - 510	Kane, Raenie
<i>Required In-Person Dates/Times: Feb 21, Feb 28, and Mar 7 from 9:00am-12:00pm.</i>					
60640	1/13 - 3/17	Remote	Remote	HYBRID	Kane, Raenie
	2/21 - 3/7	T	06:30pm-09:30pm	Anaheim Campus - 510	Kane, Raenie
<i>Required In-Person Dates/Times: Feb 21, Feb 28, and Mar 7 from 6:30pm-9:30pm.</i>					
60771	3/27 - 5/26	Remote	Remote	HYBRID	Kane, Raenie
	5/2 - 5/16	T	09:00am-12:00pm	Anaheim Campus - 510	Kane, Raenie
<i>Required In-Person Dates/Times: May 2, May 9, and May 16 from 9:00am-12:00pm.</i>					
61187	3/27 - 5/26	Remote	Remote	HYBRID	Kane, Raenie
	5/2 - 5/16	T	06:30pm-09:30pm	Anaheim Campus - 510	Kane, Raenie
<i>Required In-Person Dates/Times: May 2, May 9, and May 16 from 6:30pm-9:30pm</i>					

Medical Assistant Clinical Procedures Theory II**MEDA 210**

Prerequisite: MEDA 200 Medical Assistant Clinical Procedures Theory I. Co-requisite: MEDA 211 Medical Assistant Clinical Procedures Lab II. This course reviews the theory behind back office procedures. Students review assisting physicians with minor surgical procedures, pharmacology, laboratory procedures, nutrition, patient education, diagnostic imaging, and urgent care and emergency procedures. Textbook Required.

CRN	Dates	Days	Time	Location	Instructor
60313	1/13 - 3/17	Remote	Remote	ONLINE - ONLINE	Oo, Jennifer
61188	3/27 - 5/26	Remote	Remote	ONLINE - ONLINE	Oo, Jennifer

Medical Assistant Clinical Procedures Lab II**MEDA 211**

Prerequisite: MEDA 201 Medical Assistant Clinical Procedures Lab I. Corequisite: MEDA 210 Medical Assistant Clinical Procedures Theory II. This course develops skills needed for students to work in a clinical environment. Students will have hands-on practice of the following skills: assisting in minor procedures, creating a sterile environment, wound care, using a microscope, specimen collection, specimen processing, administering medications, injections, and venipuncture. Textbook Required.

CRN	Dates	Days	Time	Location	Instructor
60630	1/13 - 3/17	Remote	Remote	HYBRID	Oo, Jennifer
	2/8 - 3/8	W	09:00am-12:00pm	Anaheim Campus - 510	Oo, Jennifer
<i>Required In-Person Dates/Times: Feb 8, Feb 22, Mar 1, and Mar 8 from 9:00am-12:00pm</i>					
60641	1/13 - 3/17	Remote	Remote	HYBRID	Uy, Audrey
	2/8 - 3/8	W	06:30pm-09:30pm	Anaheim Campus - 510	Uy, Audrey
<i>Required In-Person Dates/Times: Feb 8, Feb 22, Mar 1, and Mar 8 from 6:30pm-9:30pm</i>					
60781	3/27 - 5/26	Remote	Remote	HYBRID	Oo, Jennifer
	4/19 - 5/17	W	09:00am-12:00pm	Anaheim Campus - 510	Oo, Jennifer
<i>Required In-Person Dates/Times: Apr 19, May 3, May 10, and May 17 from 9:00am-12:00pm</i>					
61189	3/27 - 5/26	Remote	Remote	HYBRID	Uy, Audrey
	4/19 - 5/17	W	06:30pm-09:30pm	Anaheim Campus - 510	Uy, Audrey
<i>Required In-Person Dates/Times: Apr 19, May 3, May 10, and May 17 from 6:30pm-9:30pm</i>					



Personal Care Aide

This program is designed to prepare students for an entry-level position as a personal care aide. The program consists of courses to provide students with the knowledge and skills needed to perform personal care aide tasks in a consumers' home or a residential care setting.

Personal Care Aide 1					MEDO 311
This course introduces key concepts for the personal care aide, working in different settings, teamwork, and professional behavior. Students will also gain foundational knowledge and skills in the following areas: working with elders; respecting clients; communication; working with depressed patients; infection control; basic nutrition and eating; body systems and common diseases; and proper body mechanics. This is the first course required for the Personal Care Aide Certificate designed to prepare students for employment as a Personal Care Aide (PCA). PCA's assist the elderly, convalescents, or persons with disabilities with daily living activities at their homes or in a care facility.					
CRN	Dates	Days	Time	Location	Instructor
61190	1/13 - 2/24	Remote	Remote	ONLINE - ONLINE	Uy, Audrey

Personal Care Aide 2					MEDO 312
Prerequisite: MEDO 311 Personal Care Aide 1 This course focuses on activities of daily living (ADL): bathing and personal care, toileting, bed making, and dressing. Students will learn about working with patients with dementia, mental illness, and developmental disabilities, as well as different types of abuse and neglect. This is the second course required for the Personal Care Aide Certificate designed to prepare students for employment as a Personal Care Aide (PCA). PCA's assist the elderly, convalescents, or persons with disabilities with activities of daily living at their homes or in a care facility.					
CRN	Dates	Days	Time	Location	Instructor
60769	2/27 - 4/14	Remote	Remote	HYBRID	Uy, Audrey
	3/13 - 4/3	M	06:30pm-09:30pm	Anaheim Campus - 611	Uy, Audrey
Required In-Person Dates/Times: Mar 13 and Apr 3 from 6:30pm-9:30pm					

Personal Care Aide 3					MEDO 313
Prerequisite: MEDO 311 Personal Care Aide 1 and MEDO 312 Personal Care Aide Personal Care Aides ensure better care to people while they are aging or recovering at home. This career development course will provide students with the skills needed to obtain employment as a personal care aide. Topics includes: resume writing, interviewing skills, and job search. Students will also complete CPR and First Aid training for certification.					
CRN	Dates	Days	Time	Location	Instructor
60770	4/17 - 5/26	Remote	Remote	HYBRID	Uy, Audrey
	4/24 - 5/15	M	06:30pm-09:30pm	Anaheim Campus - 611	Uy, Audrey
Required In-Person Dates/Times: Apr 24 and May 15 from 6:30pm-9:30pm					

Pharmacy Technician

NOCE's Pharmacy Technician Certificate provides the first steps to enter a new career. The program is accredited by the American Society of Health-System Pharmacists (ASHP). Become a certified pharmacy technician and prepare to work in a retail or hospital pharmacy.

Medical Terminology

(Formerly MEOC 104)

MEDO 105

This course introduces students to medical terminology in preparation for careers in the medical field. It covers the study of the basic elements of medical terms and the anatomy and physiology of the human body. It also covers different pathological conditions and procedures for their treatment.

CRN	Dates	Days	Time	Location	Instructor
60560	1/13 - 3/17	Remote	Remote	ONLINE - ONLINE	Smith, Fawn
60562	1/13 - 3/17	Remote	Remote	ONLINE - ONLINE	Tarango, Courtney
60561	3/27 - 5/26	Remote	Remote	ONLINE - ONLINE	Smith, Fawn
60850	3/27 - 5/26	Remote	Remote	ONLINE - ONLINE	Tarango, Courtney

Pharmacy Technician, Introduction

(Formerly MEOC 130)

PTEC 100

Course orients students to pharmacy practice and the work of pharmacy technicians. It covers pharmacy technician registration process and educational requirements, the role of the technician, duties and tasks technicians perform as regulated by pharmacy law, and the necessary abilities and skills for a successful career as a pharmacy technician. Textbook Required.

CRN	Dates	Days	Time	Location	Instructor
60315	1/13 - 3/17	Remote	Remote	ONLINE - ONLINE	Dunne, Catherine
<i>Students required to perform synchronous assessment sessions. Dates/Times to be listed in syllabus and arranged with instructor.</i>					
60563	3/27 - 5/26	Remote	Remote	ONLINE - ONLINE	Dunne, Catherine
<i>Students required to perform synchronous assessment sessions. Dates/Times to be listed in syllabus and arranged with instructor.</i>					

Pharmacy Operations Lab

(Formerly MEDO 230)

PTEC 105

Prerequisite: PTEC 100 Pharmacy Technician, Introduction and COMP 685 Beginning Keyboarding or Keyboarding Challenge Exam with a pass rate of 30 net words a minute. This course is an introduction to the operations of a pharmacy and provides students with a working knowledge of its structural, functional, business and inter-relational aspects within the health care system. The course also covers the basics of compounding, medication distribution and inventory control. Textbook Required.

CRN	Dates	Days	Time	Location	Instructor
60316	3/27 - 5/26	Remote	Remote	ONLINE - ONLINE	Shields, Julie
<i>Students required to perform synchronous assessment sessions. Dates/Times to be listed in syllabus and arranged with instructor.</i>					

Pharmaceutical Mathematics

(Formerly MEOC 140)

PTEC 110

Prerequisite: PTEC 100 Pharmacy Technician, Introduction. Includes a review of basic mathematics focusing on its application to common pharmaceutical calculations; terminology, abbreviations and units needed to perform pharmaceutical calculations; and how to interpret pharmaceutical documents using acquired pharmaceutical math knowledge. Textbook Required.

CRN	Dates	Days	Time	Location	Instructor
60317	1/13 - 3/17	Remote	Remote	ONLINE - ONLINE	Shields, Julie
<i>Students required to perform synchronous assessment sessions. Dates/Times to be listed in syllabus and arranged with instructor.</i>					

Pharmacology I
(Formerly MEOC 121)

PTEC 115

Prerequisite: MEDO 105 Medical Terminology. Students will learn the principles of pharmacology. Students will review classifications of medicines, trade and generic names, side effects and drug interactions related to the neurological, visual, auditory, integumentary, and musculoskeletal body systems. Over-the-counter drugs including antihistamines, anti-inflammatory, analgesics, vitamins and natural substances will be covered. Textbook Required.

CRN	Dates	Days	Time	Location	Instructor
60318	1/13 - 3/17	Remote	Remote	ONLINE - ONLINE	Shields, Julie
<i>Students required to perform synchronous assessment sessions.</i>					
<i>Dates/Times to be listed in syllabus and arranged with instructor.</i>					

Pharmacology II
(Formerly MEOC 122)

PTEC 120

Prerequisite: MEDO 105 Medical Terminology. Students will learn the principles of pharmacology. Students will review classifications of medicines, trade and generic names, side effects and drug interactions related to the cardiovascular, blood, respiratory, urinary, digestive, endocrine and reproductive body systems. Anti-infectives, vaccines, oncology agents, as well as fluid and electrolytes are covered. Textbook Required.

CRN	Dates	Days	Time	Location	Instructor
60319	3/27 - 5/26	Remote	Remote	ONLINE - ONLINE	Shields, Julie
<i>Students required to perform synchronous assessment sessions.</i>					
<i>Dates/Times to be listed in syllabus and arranged with instructor.</i>					

Human Relations for Healthcare Workers
(Formerly MEOC 135)

PTEC 125

Covers basic communications skills with emphasis on the healthcare profession. Topics include non-verbal communication, group communication, conflict resolution, ethics in health communication, elements of intercultural communication, resume writing, job application and interviewing techniques. Textbook Required.

CRN	Dates	Days	Time	Location	Instructor
60320	1/13 - 3/17	Remote	Remote	ONLINE - ONLINE	Dunne, Catherine

Pharmacy Technician, Lab for the In-Patient
(Formerly MEDO 221)

PTEC 200

Prerequisite: PTEC 105 Pharmacy Operations Lab and PTEC 110 Pharmaceutical Mathematics and PTEC 115 Pharmacology I and PTEC 120 Pharmacology II. Course covers the preparation of medications given by intravenous, epidural and subcutaneous routes of administration. The student will learn aseptic techniques, pharmacy IV calculations, drug compatibilities and stabilities, IV therapy management, and specialized equipment. The laboratory incorporates use of laminar and vertical flow hoods and computerized software for IV preparation. Textbook Required.

CRN	Dates	Days	Time	Location	Instructor
60321	1/13 - 3/17	Remote	Remote	HYBRID	Shields, Julie
	1/18 - 3/15	W	06:00pm-08:00pm	Anaheim Campus - 408	Shields, Julie
61191	3/27 - 5/26	Remote	Remote	HYBRID	Shields, Julie
	3/29 - 5/24	W	09:00am-11:00am	Anaheim Campus - 408	Shields, Julie

Pharmacy Technician, Lab for the Out-Patient (Formerly MEDO 220)

PTEC 205

Prerequisite: MEDO 105 Medical Terminology and PTEC 105 Pharmacy Operations Lab and PTEC 110 Pharmaceutical Mathematics and PTEC 115 Pharmacology I and PTEC 120 Pharmacology II. This course is designed to provide pharmacy technician students with practical experience in a simulated out-patient pharmacy setting. It includes hands-on experience working with a computerized pharmacy management system in the retail setting, third party billing and telephone etiquette. Textbook Required.

CRN	Dates	Days	Time	Location	Instructor
60322	1/13 - 3/17	Remote	Remote	ONLINE - ONLINE	Dunne, Catherine
<i>Students required to perform synchronous assessment sessions. Dates/Times to be listed in syllabus and arranged with instructor.</i>					
60566	3/27 - 5/26	Remote	Remote	ONLINE - ONLINE	Dunne, Catherine
<i>Students required to perform synchronous assessment sessions. Dates/Times to be listed in syllabus and arranged with instructor.</i>					



Pharmacy Technician Practical Career Training - Entry (Formerly MEDO 316)

PTEC 300

Prerequisite: PTEC 125 Human Relations for Healthcare Workers and PTEC 200 Pharmacy Technician, Lab for the In-Patient and PTEC 205 Pharmacy Technician, Lab for the Out-Patient. This course is designed to provide pharmacy technician students with field experience in an out-patient pharmacy environment. It requires weekly class meetings plus 130-hours of externship in an approved pharmacy. Class topics include professionalism, current issues in pharmacy, and work performance. Textbook Required.

CRN	Dates	Days	Time	Location	Instructor
61192	3/27 - 5/26	Remote	Remote	ONLINE - ONLINE	Dunne, Catherine

Pharmacy Technician Certification Exam Review

PTEC 310

This course is a review for the pharmacy technician certification exam. It covers the registration process and re-certification requirements, and reviews the materials contained on the exam. This course is designed as a review for individuals who have completed a pharmacy technician program or who are working pharmacy technicians. Textbook Required.

CRN	Dates	Days	Time	Location	Instructor
60580	2/27 - 5/26	Remote	Remote	ONLINE - ONLINE	Shields, Julie

Quality Assurance Management for Medical Devices

The Quality Assurance Management for Medical Devices Program prepares students for an entry-level job within the medical device industry. This program provides detailed training on the standards and regulations of medical devices. If you are detailed-oriented, love to read and write, and are good at problem solving, this career path is for you!

Medical Device Quality Assurance Specialist, Introduction

(Formerly BMGR 645)

QAMD 400

This course introduces students to the medical device industry in preparation for an entry-level position as a quality assurance specialist. Learn the role and responsibilities of a quality assurance specialist within the medical device industry. Learn about the industry's size and scope, current trends, and products used in healthcare settings.

CRN	Dates	Days	Time	Location	Instructor
61193	1/18 - 3/15	W	05:30pm-09:20pm	Anaheim Campus - 610	Vu, David

Quality Assurance for Medical Devices

(Formerly BMGR 654)

QAMD 415

This course provides students with an in-depth overview of quality assurance and its role within the medical device industry. The course covers the role of assurance during the manufacturing and production stages. Topics will include the step-by-step process of ensuring quality requirements are met for a product or service.

CRN	Dates	Days	Time	Location	Instructor
61195	3/29 - 5/24	W	05:30pm-09:20pm	Anaheim Campus - 610	Vu, David



DISABILITY SUPPORT SERVICES

Increase independence and self-advocacy.

Prepare for and obtain competitive employment.

Get support with emotional health and relationship skills.

Access disability resources for college courses.

Explore noce.edu/dss.



Need Translated Instructions?

¿Necesita instrucciones traducidas?

Haga clic en "Traducir" en la esquina superior derecha de la página. Seleccione su idioma para traducir el sitio. O llame al **714.808.4679** para obtener más ayuda.

Program Overview

Disability Support Services

The Disability Support Services (DSS) Program provides support to adults with disabilities so they can successfully complete their postsecondary education, job, and independent living goals at NOCE.

Academics Relationships Independence Self-advocacy Emotional-health (ARISE)

ARISE is a neurodiversity and wellness lab designed to bolster student persistence by supporting students with organization, time management, self-monitoring, critical thinking, and social skills that lead to academic and vocational success. The lab is a safe space where students can relax quietly, or access faculty and staff for help managing daily stressors.

Visit noce.edu/arise.

College to Career (C2C)

C2C provides support services to help students with intellectual disabilities succeed in noncredit and credit classes leading to an inclusive college experience.

Visit noce.edu/college2career.

Independent Vocational and Educational Supports (IVES)

IVES and Equity Coaching provides educational coaching to support students enrolled in inclusive noncredit and credit courses at NOCE, Cypress College, and Fullerton College.

Visit noce.edu/ives.

Mobility Training

Students learn the skills needed to independently use the public transportation system.

Visit noce.edu/mobility.

Work Independence Self-Advocacy Education (WISE)

Students learn to live more independently, build employment skills, and navigate their community. WISE is open to adults with disabilities who are served by Regional Center and who require a higher level of instructional support than the NOCE DSS classes. With a 1:4 staff-to-student ratio, students get personalized attention and earn certificates for completing the program. Visit noce.edu/wise.

Workability III

Workability III, a collaboration between NOCE and the Department of Rehabilitation, helps students with disabilities overcome barriers to employment. Job and employment specialists meet with students to determine individual skills, job aptitude, and work readiness.

Visit noce.edu/workability.

Ready to Get Started?

Once you've applied to NOCE...

1. Meet with a DSS counselor to complete onboarding and registration: **714.484.7057** or disabilitysupport@noce.edu.
2. Attend class
 - Online by logging into Canvas on the start date listed in the class schedule.
 - In person on the date, time, and at the location listed in the class schedule.

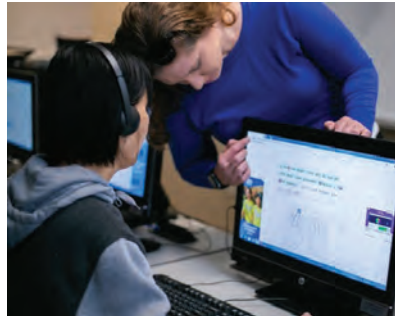


Have Questions?

Need Registration Help?

714.484.7057 or disabilitysupport@noce.edu

★ TIP: Make arrangements for support four weeks prior to the start of class. For information about what to bring to the appointment with the DSS counselor, visit noce.edu/dss/registration.



Info Sessions

Want to learn more about the DSS programs including Workability or College to Career? Join us for an information session via Zoom: noce.edu/info-sessions.



★ NOTE

As of January 1, 2023, the COVID-19 vaccination is no longer required, but is still strongly recommended for all persons visiting NOCCCD campuses. More information at noce.edu/vaccine.

Academic Track

Reading: Use in Real Life Situations

DSSS 117

This course is designed to assist students in increasing their functional reading comprehension and writing skills found in real life and vocational situations.

CRN	Dates	Days	Time	Location	Instructor
61513	1/13 - 5/27	Remote	Remote	ONLINE - ONLINE	Prell, Megan
<i>Optional: Online class meetings - Mondays & Wednesdays, from 10:00 - 11a. Zoom link provided by instructor.</i>					
61551	1/13 - 5/27	Remote	Remote	ONLINE - ONLINE	Ferrier, Allison
<i>Optional: Online class meetings - Tuesdays & Thursdays from 9:00 - 10:00a. Zoom link provided by instructor.</i>					
61570	1/13 - 5/27	Remote	Remote	ONLINE - ONLINE	Sorooshian-Tafti, Rose
<i>Optional: Online class meetings - Tuesdays & Thursdays from 12:30 - 1:30p. Zoom link provided by instructor</i>					

Money Skills: Smart Shopping & Completing Transaction

DSSS 133

This course is designed to provide students with the skills necessary for accurately making money exchanges, as well as saving and shopping smartly. Course topics will include counting the appropriate amounts of money for purchases, making change, tip calculations and tools, comparison shopping techniques and online deals to find the best bargain.

CRN	Dates	Days	Time	Location	Instructor
61515	1/13 - 5/27	Remote	Remote	ONLINE - ONLINE	Sorooshian-Tafti, Rose
<i>Optional: Online class meetings - Mondays and Wednesdays from 10:00 - 11:00a. Zoom link provided by instructor.</i>					
61558	1/13 - 5/27	Remote	Remote	ONLINE - ONLINE	Sorooshian-Tafti, Rose
<i>Optional: Online class meetings - Mondays & Wednesdays from 1:00 - 2:00p. Zoom link provided by instructor.</i>					

Community Track

Community Resources, Advanced

DSSS 111

This course is designed for students to utilize public transportation to access community agencies and resources. Topics include occupational resources in the community and more advanced public transportation skills.

CRN	Dates	Days	Time	Location	Instructor
61565	1/13 - 5/27	Remote	Remote	ONLINE - ONLINE	Stanojkovic, Alli
<i>Optional: Online class meetings Mondays from 2:00 - 3:00p and Fridays from 9:00 - 10:00a. Zoom link provided by instructor.</i>					
61556	1/18 - 5/24	W	09:00am-02:50pm	Tech Ed II - CC - 223	Cunningham, Julia

Computer Track

Computer Fundamentals: Basic Word Processing Editing

DSSS 121

This course is designed for students interested in learning basic word processing editing and problem solving skills using technology. Topics include keyboarding, editing, and exploration of basics in word processing software.

CRN	Dates	Days	Time	Location	Instructor
61561	1/18 - 5/24	M W	12:30pm-02:50pm	Tech Ed II - CC - 200	Van Gelder, Matthew

Computers: Presentation Software & Basic Formatting**DSSS 122**

Designed for students interested in developing introductory skills on the use of presentation software and entry level data entry. Topics include training on the use of PowerPoint slide presentation software and basic spreadsheet software for data entry skill development.

CRN	Dates	Days	Time	Location	Instructor
61555	1/17 – 5/25	T Th	09:00am-11:50pm	Tech Ed II - CC - 200	Van Gelder, Matthew
61546	1/17 - 5/25	T Th	12:30pm-02:50pm	Anaheim Campus - 308	Prell, Megan

Photoshop Elements: Layering and Special Effects**DSSS 125**

Designed for individuals interested in increasing their basic knowledge of photo editing software. Topics include introduction to layering special effects and adding text.

CRN	Dates	Days	Time	Location	Instructor
61549	1/13 - 5/27	Remote	Remote	ONLINE - ONLINE	Van Gelder, Matthew
<i>Optional: Online class meetings - Fridays from 9:00 - 11:00a. Zoom link provided by instructor.</i>					

Core Skills Track**Self Advocacy: Communication with Authority & Emergency Personnel****DSSS 151**

This course prepares students with the skills necessary for interaction with police and emergency personnel. Topics include an overview of the criminal justice system, rights of individuals if taken into custody and reporting victimization.

CRN	Dates	Days	Time	Location	Instructor
61514	1/13 - 5/27	Remote	Remote	ONLINE - ONLINE	Prell, Megan
<i>Optional: Online class meetings - Tuesdays & Thursdays, from 10:00 - 11:00a. Zoom link provided by instructor.</i>					
61559	1/13 - 5/27	Remote	Remote	ONLINE - ONLINE	Stanojkovic, Alli
<i>Optional: Online class meetings - Tuesdays & Thursdays, from 1:00 - 2:00p. Zoom link provided by instructor.</i>					
61566	1/18 - 5/24	M W	09:00am-11:20am	Wilshire NOCE 200 BLDG - 201	Williams, Courtney

Social Skills: Conflict Management and Resolution Basics**DSSS 153**

This course is designed to provide students with an overview of conflict management and resolution skills at home, school, work, and in the community, using a variety of basic skills.

CRN	Dates	Days	Time	Location	Instructor
61552	1/18 - 5/24	M W	09:00am-11:20am	Tech Ed II - CC - 200	Van Gelder, Matthew
61518	1/17 - 5/25	T Th	09:00am-11:20am	Anaheim Campus - 610	Cunningham, Julia

Employment Skills Track**Job Skills: Work Attitude & Employer Expectations****DSSS 141**

This course is intended to prepare students for successful employment by introducing them to appropriate on-the-job behavior, communication, attitude and work ethics. Students will also be introduced to the importance of workplace safety and customer service.

CRN	Dates	Days	Time	Location	Instructor
61569	1/13 - 5/27	Remote	Remote	ONLINE - ONLINE	Stanojkovic, Alli
<i>Optional: Online class meetings - Mondays & Wednesdays from 1:00 - 2:00p. Zoom link provided by instructor.</i>					
61562	1/17 - 5/25	T Th	12:30pm-02:50pm	Tech Ed II - CC - 200	Van Gelder, Matthew

Communication on the Job: Effectively Dealing with Work Related Problems

DSSS 143

A class designed for students interested in enhancing their communication skills in relationship to employment. Course topics will include communication styles, making good first impressions, workplace bullying, Title IX, basics in professional verbal and written communication

CRN	Dates	Days	Time	Location	Instructor
61519	1/13 - 5/27	Remote	Remote	ONLINE - ONLINE	Calsita, Ciara
Online class meetings - Tuesdays & Thursdays from 12:00 - 1:00p. Zoom link provided by instructor.					
61517	1/18 - 5/24	M W	09:00am-11:20am	Anaheim Campus - 312	Pietrzak, Edyta

Educational Support and Employment Prep Lab

DSSS 370

This course is designed to provide students with the basic knowledge to develop educational and vocational skills. Students will increase awareness of campus and community supports, build self-advocacy skills, as well as exercise communication and mobility skills.

CRN	Dates	Days	Time	Location	Instructor
61516	1/13 - 5/27	Remote	Remote	ONLINE - ONLINE	Calsita, Ciara
	1/19 - 5/25	Th	09:00am-11:20am	Anaheim Campus - 313	Calsita, Ciara

Interpersonal Skills Track

Relationships: Values, Intimacy & Sexuality Concepts

DSSS 161

This course is designed to give students a more in depth understanding of the aspects of building and growing general relationships, intimate relationships and boundaries. Topics include relationship types, setting boundaries as well as an overview of sexuality concepts, using a variety of basic skills.

CRN	Dates	Days	Time	Location	Instructor
61571	1/18 - 5/24	M W	12:30pm-02:50pm	Wilshire NOCE 200 BLDG - 201	Williams, Courtney

Boundaries & Relationships: Personal Development and Safety

DSSS 163

This course is designed to provide students the knowledge and skills they need to have safe and healthy interpersonal relationships. Topics covered include personal values, making choices, dating and sexual relationships, human development, sexual activity, birth control, and pregnancy.

CRN	Dates	Days	Time	Location	Instructor
61550	1/13 - 5/27	Remote	Remote	ONLINE - ONLINE	Ferrier, Allison
Optional: Online Class meetings- Mondays from 9:00 - 11:00a. Zoom link provided by instructor.					
61545	1/18 - 5/27	M W	12:30pm-02:50pm	Anaheim Campus - 308	Prell, Megan

Life Skills Track

Banking & Bill Paying: Budgeting

DSSS 131

A quick-paced course designed to provide money-management skills for students interested in living in their own apartment and managing finances.

CRN	Dates	Days	Time	Location	Instructor
61564	1/13 - 5/27	Remote	Remote	ONLINE - ONLINE	Breen, Theresa
Optional: Online class meetings - Tuesdays & Thursdays from 10:00 - 11:00a. Zoom link provided by instructor.					

Basic Cooking: Advanced Skills**DSSS 135**

This course is designed for students interested in learning more advanced skills of cooking and food preparation concepts and activities. Topics include kitchen cleanliness and safety, nutrition, and grocery shopping skills, using a variety of basic skills.

CRN	Dates	Days	Time	Location	Instructor
61553	1/13 - 5/26	F	09:00am-02:50am	NOCE Cypress BLDG 18 - 107	Prell, Megan
61554	1/13 - 5/26	F	09:00am-02:50am	NOCE Cypress BLDG 18 - 107	Carmona, Mirta
61563	1/13 - 5/27	Remote	Remote	ONLINE - ONLINE	Stanojkovic, Alli

Optional: Online class meetings - Mondays & Wednesdays from 10:00 - 11:00a. Zoom link provided by instructor.

Independent Living: Health, Safety & Living with Roommates**DSSS 138**

This course is designed to help students to learn about the responsibilities of maintaining a home. Students will be presented with strategies for cooperative living and problem solving, identifying needs and safety.

CRN	Dates	Days	Time	Location	Instructor
61547	1/17 - 5/25	T Th	12:30pm-02:50pm	Anaheim Campus – 610	Cunningham, Julia
61560	1/18 - 5/24	M W	12:30pm-02:50pm	NOCE Cypress BLDG 18 - 107	Calsita, Ciara
61567	1/17 - 5/25	T Th	09:00am-11:20am	Wilshire NOCE 200 BLDG - 201	Stanojkovic, Alli
	1/17 - 5/25	T Th	09:00am-11:20am	ZOOM - ZOOM	Stanojkovic, Alli

WISE Program**WISE - US Geography****DSSS 309**

This class is designed for adults with developmental disabilities and learning disabilities who want to learn United States geography. Students will learn about states, state capitals, and major United States landmarks.

CRN	Dates	Days	Time	Location	Instructor
61557	1/13 - 5/26	MTWThF	09:00am-02:20pm	NOCE Cypress BLDG – 103	Brown, Julie
					Pietrzak, Edyta
61568	1/13 - 5/26	MTWThF	09:00am-02:20pm	Wilshire NOCE 200 BLDG - 207	Reeves, Megan
					Breen, Theresa

DSS Off-Site Location

CRN	Location
61572	My Day Counts
61573	My Day Counts
61574	My Day Counts
61575	West Anaheim TRC
61576	West Anaheim TRC



ENGLISH AS A SECOND LANGUAGE AND CITIZENSHIP

Practice listening, speaking, reading, and writing skills.

Learn English and job skills at the same time.

Prepare for the U.S. Citizenship Test.

Develop academic skills for success in college.

Explore noce.edu/ESL

714.808.4638 | ESL4ALL@noce.edu



Need Translated Instructions?

¿Necesita instrucciones traducidas?

Haga clic en “Traducir” en la esquina superior derecha de la página. Seleccione su idioma para traducir el sitio. O llame al **714.808.4638** para obtener más ayuda.

Program Overview

English as a Second Language (ESL) Courses

The ESL Program offers six levels of English – from literacy to advanced - with instruction in listening, speaking, reading, writing, and grammar. Specialty courses for beginning and intermediate/advanced students offer additional practice. Visit noce.edu/esl.

ESL Learning Center

ESL Learning Centers have instructors and staff available to help students with homework, resources, technology, and more. In-person at Anaheim Campus, Cypress Center, and Wilshire Center, and online in Zoom: noce.edu/ESL/LC.

Pathway to Citizenship

Citizenship classes prepare students to take the USCIS Citizenship Test. Students examine required forms and prepare for their USCIS Citizenship Interview by practicing the USCIS Civics Questions, conversation strategies, and dictation. Classes available for Beginning and Intermediate/Advanced level students. More info at noce.edu/citizenship.

Career Pathways for English Language Learners (ELLs)

In partnership with our Career Technical Education (CTE) Program, NOCE offers career pathway programs for ESL students. Two instructors work with students to learn career-specific language and job skills to prepare them for rewarding entry-level positions. See page 63 or visit noce.edu/esl/careerpathways. For more information and/or to register, contact the ESL Program at 714.808.4638 or ESL4ALL@noce.edu.

Get Ready for College

Academic Success classes and certificates are available for Intermediate-Advanced ESL Program students with a goal of transferring to college or university. More info at noce.edu/esl-academic.

Ready to Get Started?

Once you've applied to NOCE...

1. Complete "NOCE ESL Orientation" through myGateway at noce.edu/mygateway. Visit noce.edu/orientation for details.
2. Call or e-mail the ESL Program to schedule a placement test and registration at 714.808.4638 or ESL4ALL@noce.edu.
3. Attend class in-person or online through Canvas at noce.edu/canvas.

Have Questions?

Need Registration Help?

¿Necesita ayuda con el registro?

714.808.4638 or ESL4ALL@noce.edu

ESL Program Certificates

The ESL Program offers certificates of completion that students can earn when they pass all courses listed. The state-approved certificates awarded appear on official student transcripts. For more information on certificate requirements, please visit noce.edu/esl/certificates.

Core Certificates

ESL Intergrated Skills	
• Beginning Literacy	ESLA 229 + 18 hours ESLA 001
• Beginning Low	ESLA 230 + 18 hours ESLA 001
• Beginning High	ESLA 231 + 18 hours ESLA 001
• Intermediate Low	ESLA 232 + 18 hours ESLA 001
• Intermediate High	ESLA 233 + 18 hours ESLA 001
• Advanced	ESLA 234 + 18 hours ESLA 001

Specialty Certificates

ESL for Community Involvement	
• Beginning	ESLA 260 + One elective: ESLA 180, 182, 185, 222, 225, 250, or 801
• Intermediate/Advanced	ESLA 261 + One elective: ESLA 181, 183, 186, 223, 226, 251, or 815
ESL Grammar Review	ESLA 222 + ESLA 223
ESL Reading & Writing Skills	
• Beginning	ESLA 180 + ESLA 185
• Intermediate/Advanced	ESLA 181 + ESLA 186
ESL Speaking Skills	
• Beginning	ESLA 182 + (ESLA 222 or ESLA 225)
• Intermediate/Advanced	ESLA 183 + (ESLA 223 or ESLA 226)
ESL Specialty Courses	ESL Learning Center, 12 hrs (ESLA 001) + One elective: ESLA 180, 181, 182, 183, 185, 186, 211, 222, 223, 225, 226, 250, 251, 801, 804, or 815
ESL Vocabulary Review	ESLA 225 + ESLA 226

College and Career Pathway Certificates

ESL for Academic Success I	ESLA 1060 + ESLA 1062
ESL for Academic Success II	ESLA 1065 + ESLA 1067
ESL for Workforce Preparation	
• Intermediate	ESLA 1050 + ESLA 1052
• Advanced	ESLA 1056 + ESLA 1054

Info Sessions

Want to learn more about the various ESL and citizenship preparation classes including how to earn certificates and steps to register? Join us for an information session via Zoom: noce.edu/info-sessions,

★ NOTE

As of January 1, 2023, the COVID-19 vaccination is no longer required, but is still strongly recommended for all persons visiting NOCCCD campuses. More information at noce.edu/vaccine.

ESL Learning Center

Need extra practice with English? Want help participating in your online class?

At the ESL Learning Center, students can:

- Get help with technology
- Learn at your own pace, guided by experienced and professional teachers
- Focus on conversation, grammar, reading, or writing skills
- Explore American idioms and culture
- Use technology resources to learn and practice English

ESL Learning Center schedule: NOCE.EDU/ESL/LC | Questions: 714.808.4638 or ESL4ALL@noce.edu

ESL Learning Center

ESLA 001

The ESL Learning Center offers an opportunity to practice English through various instructional media. Students learn through ESL software and/or receive individual and group tutoring to improve their speaking, listening, reading and writing skills. Special interest areas such as Vocational ESL and EL Civics are also part of the instruction.

CRN	Dates	Days	Time	Location
In-Person Classes				
61400	1/13 - 5/25	MTWTh	12:00pm-06:00pm	Anaheim Campus - 121
61286	1/13 - 5/25	MTWTh	12:00pm-06:00pm	Cypress Tech Ed 2 - 203
61288	1/13 - 5/25	MTWTh	12:00pm-02:00pm	Wilshire NOCE 200 BLDG – 214
	1/13 - 5/25	MTWTh	05:00pm-06:00pm	Wilshire NOCE 200 BLDG – 214
Online Classes				
61413	1/13 - 5/26	MTWTh	12:00pm-09:00pm	Online Zoom
	1/13 - 5/26	F	8:00a-09:00pm	Online Zoom

*Schedule subject to change. Check website for current schedule and Zoom links: www.noce.edu/esl/lc.
Call 714-808-4638 or email ESL4ALL@noce.edu for more information.*



ESL Core Classes – Integrated Skills

ESL Integrated Skills, Beginning Literacy

ESLA 229

This course is designed for adult language learners who possess limited to no proficiency in English. Students also may not possess literacy skills in their first language. The class will focus on basic vocabulary in English along with basic writing conventions and pronunciation. Students will start to build competency in all four-language skills: reading, writing, listening and speaking. Course topics relate to everyday needs and include information related to community resources, the workplace and lifelong learning opportunities. English language and civics topics are chosen each semester based on student needs.

CRN	Dates	Days	Time	Location	Instructor
In-Person Classes					
61296	1/13 - 5/25	MTWTh	08:30am-11:50am	Anaheim Campus - 106	Takeda, Nancy
61303	1/13 - 5/25	MTWTh	06:00pm-09:20pm	Anaheim Campus - 106	Witt, Sharon
Online Classes					
61347	1/13 - 5/26	MTWTh	08:30am-11:20am	ZOOM - ZOOM	Pico, Karina
61348	1/13 - 5/26	MTWTh	09:00am-11:50am	ZOOM - ZOOM	Billiter, Laura
61349	1/13 - 5/26	MTWTh	06:30pm-09:20pm	ZOOM - ZOOM	Lee, Julie

ESL Integrated Skills, Beginning Low

ESLA 230

This course focuses on developing basic-level listening, speaking, reading and writing skills. Students will acquire basic language forms and functions to help them access community resources, prepare for the workplace and introduce them to lifelong learning opportunities.

CRN	Dates	Days	Time	Location	Instructor
In-Person Classes					
61297	1/13 - 5/25	MTWTh	08:30am-11:50am	Anaheim Campus - 104	Glicker, Eric
61438	1/13 - 5/25	MTWTh	08:30am-11:50am	Anaheim Campus - 108	Choi, Jean
61305	1/13 - 5/25	MTWTh	06:00pm-08:50pm	Anaheim Campus - 117	Alvarez, Cristina
61304	1/13 - 5/25	MTWTh	06:00pm-09:20pm	Anaheim Campus - 104	Robinson, Chris
61316	1/13 - 5/25	MTWTh	08:30am-11:50am	Cypress Tech Ed 2 - 215	Kepler, Marc
61320	1/13 - 5/25	MTWTh	08:30am-11:50am	Wilshire NOCE 200 BLDG - 215	Koh, Myung
Online Classes					
61351	1/13 - 5/26	MTWTh	08:30am-11:20am	ZOOM - ZOOM	Howie, Sherri
61352	1/13 - 5/26	MTWTh	06:30pm-09:20pm	ZOOM - ZOOM	Stasiuk, Pedro



ESL Integrated Skills, Beginning High

ESLA 231

This course focuses on developing beginning-level listening, speaking, reading and writing skills. It also involves competency-based learning to help students access community resources, prepare them for the workplace and introduce them to lifelong learning opportunities.

CRN	Dates	Days	Time	Location	Instructor
In-Person Classes					
61298	1/13 - 5/25	MTWTh	08:30am-11:50am	Anaheim Campus - 110	Arellano, Peggy
61299	1/13 - 5/25	MTWTh	08:30am-11:50am	Anaheim Campus - 124	Fu, Agnes
61308	1/13 - 5/25	MTWTh	06:00pm-09:20pm	Anaheim Campus - 124	Arias, Ana
61306	1/13 - 5/25	MTWTh	06:00pm-09:20pm	Anaheim Campus - 110	Lim, Emmie
61317	1/13 - 5/25	MTWTh	08:30am-11:50am	Cypress Tech Ed 2 - 221	Smith, Marlo
61321	1/13 - 5/25	MTWTh	08:30am-11:50am	Wilshire NOCE 200 BLDG - 218	Lorge, Mary
Online Classes					
61353	1/13 - 5/26	MTWTh	08:30am-11:20am	ZOOM - ZOOM	Hasan, Fouton
61354	1/13 - 5/26	MTWTh	08:30am-11:20am	ZOOM - ZOOM	Espinoza, Maria
61355	1/13 - 5/26	MTWTh	08:30am-11:20am	ZOOM - ZOOM	Moore, Catherine
61357	1/13 - 5/26	MTWTh	06:30pm-09:20pm	ZOOM - ZOOM	Lewis, Waymon
61356	1/13 - 5/26	MTWTh	06:30pm-09:20pm	ZOOM - ZOOM	Pabla, Hardeep

ESL Integrated Skills, Intermediate Low**ESLA 232**

This course focuses on developing intermediate-level listening, speaking, reading and writing language skills. It also involves competency-based learning to help students access community resources, prepare them for the workplace and introduce them to lifelong learning opportunities.

CRN	Dates	Days	Time	Location	Instructor
In-Person Classes					
61300	1/13 - 5/25	MTWTh	08:30am-11:50am	Anaheim Campus - 130	Pyo, Henry
61310	1/13 - 5/25	MTWTh	06:00pm-08:50pm	Anaheim Campus - 130	Sivri, Ecenur
61285	1/13 - 5/25	MTWTh	08:30am-11:50am	Cypress Tech Ed 2 - 219	Niyondagara, Alice
61322	1/13 - 5/25	MTWTh	08:30am-11:50am	Wilshire NOCE 200 BLDG - 203	Sanchez, Patricia
Online Classes					
61366	1/13 - 5/26	MTWTh	08:30am-10:30am	ONLINE - ONLINE	Jones, Abram
<i>Class is 12 hours per week. Live online class meetings MTWTh 8:30-10:30a (1/17-5/26/23). Zoom link and independent coursework in Canvas.</i>					
61365	1/13 - 5/26	MTWTh	09:00am-10:45am	ONLINE - ONLINE	Azarcon, Cynthia
<i>Class is 14 hours per week. Live online class meetings MTWTh 9:00-10:45a (1/17-5/26/23). Zoom link and independent coursework in Canvas.</i>					
61367	1/13 - 5/26	MTWTh	09:00am-10:45am	ONLINE - ONLINE	Jimenez, Alvin
<i>Class is 14 hours per week. Live online class meetings MTWTh 9:00-10:45a (1/17-5/26/23). Zoom link and independent coursework in Canvas.</i>					
61293	1/13 - 5/26	MTWTh	09:15am-11:15am	ONLINE - ONLINE	Diaz, Carlos
<i>Class is 12 hours per week. Live online class meetings MTWTh 9:15-11:15a (1/17-5/26/23). Zoom link and independent coursework in Canvas.</i>					
61370	1/13 - 5/26	MTWTh	06:30pm-08:15pm	ONLINE - ONLINE	Murillo, Sandra
<i>Class is 12.5 hours per week. Live online class meetings MTWTh 6:30-8:15p (1/17-5/26/23). Zoom link and independent coursework in Canvas.</i>					
61369	1/13 - 5/26	MTWTh	06:30pm-08:15pm	ONLINE - ONLINE	Peterson, Lucas
<i>Class is 14 hours per week. Live online class meetings MTWTh 6:30-8:15p (1/17-5/26/23). Zoom link and independent coursework in Canvas.</i>					
61368	1/13 - 5/26	MTWTh	07:00pm-08:30pm	ONLINE - ONLINE	Khssassi, Zineb
<i>Class is 12 hours per week. Live online class meetings MTWTh 7:00-8:30p (1/17-5/26/23). Zoom link and independent coursework in Canvas.</i>					



Student Success Spotlight: Zully Torres

Zully Torres immigrated to the United States from Mexico in 2021 to reunite with her two teenage children. Although she had nearly 20 years' experience as a family medicine nurse in Mexico, Zully had to start from the very beginning in America. Learning a new language, new rules, new challenges, and setting new goals was difficult for her at first, until she discovered NOCE. She first enrolled in English as a Second Language classes to increase her chances of achieving her personal goals. Right away, Zully loved

the warmth of the staff and the attention that NOCE gave to her. The faculty and staff helped her understand the step-by-step processes, resolve her doubts, and develop an educational plan. The counselors shared the benefits of finishing her high school diploma and college opportunities. Zully also received support services from NOCE Grads to Be, a program that supports undocumented students through resources and services to successfully continue their educational journey and personal well-being. With her positive attitude, Zully has left an impression on NOCE too! "Zully is a gifted student," says counselor Rosemary Rangel. "She is an inspiration to me." This year, Zully plans to complete her high school diploma, continue to build her English fluency, and transfer to Cypress College to enroll in medical sonography. Way to go, Zully!

English and U.S. Citizenship

ESL Integrated Skills, Intermediate High

ESLA 233

This is a four-skill language course using topics and information sources related to student need. Students will build English fluency in reading, writing, listening and speaking by acquiring new vocabulary and applying learned grammatical structures. In this course, students will apply learned language skills to accessing community resources and being an active community participant. Language acquisition and practice is focused on helping students navigate the many ins and outs of their communities. Civics topics will be chosen each term based on the needs of the students.

CRN	Dates	Days	Time	Location	Instructor
In-Person Classes					
61301	1/13 - 5/25	MTWTh	08:30am-11:50am	Anaheim Campus - 128	Rezai, Maryam
61311	1/13 - 5/25	MTWTh	06:00pm-09:20pm	Anaheim Campus - 128	Ramirez, Cindy
61318	1/13 - 5/25	MTWTh	08:30am-11:50am	Cypress Tech Ed 2 - 208	Sahakian, Souzan
61287	1/13 - 5/25	MTWTh	08:30am-11:50am	Wilshire NOCE 200 BLDG - 214	Lynch, Candace
Online Classes					
61373	1/13 - 5/26	MTWTh	08:30am-10:15am	ONLINE - ONLINE	Carson, Gerald
<i>Class 14 hours per week. Live online class meetings MTWTh 8:30-10:15a (1/17-5/26/23). Zoom link and independent coursework in Canvas.</i>					
61372	1/13 - 5/26	MTWTh	08:30am-10:15am	ONLINE - ONLINE	Myers, Victoria
<i>Class 14 hours per week. Live online class meetings MTWTh 8:30-10:15a (1/17-5/26/23). Zoom link and independent coursework in Canvas.</i>					
61374	1/13 - 5/26	MTWTh	08:30am-10:15am	ONLINE - ONLINE	Kahlon, Harinder
<i>Class 14 hours per week. Live online class meetings MTWTh 8:30-10:15a (1/17-5/26/23). Zoom link and independent coursework in Canvas.</i>					
61371	1/13 - 5/26	MTWTh	08:30am-10:15am	ONLINE - ONLINE	Kopydlowska, Grazyna
<i>Class is 14 hours per week. Live online class meetings MTWTh 8:30-10:15a (1/17-5/26/23). Zoom link and independent coursework in Canvas.</i>					
61375	1/13 - 5/26	MTWTh	06:30pm-08:15pm	ONLINE - ONLINE	Croteau, Ronald
<i>Class is 12.5 hours per week. Live online class meetings MTWTh 6:30-8:15p (1/17-5/26/23). Zoom link and independent coursework in Canvas.</i>					
61377	1/13 - 5/26	MTWTh	06:30pm-08:15pm	ONLINE - ONLINE	Gray, Richard
<i>Class 14 hours per week. Live online class meetings MTWTh 6:30-8:15p (1/17-5/26/23). Zoom link and independent coursework in Canvas.</i>					
61376	1/13 - 5/26	MTWTh	06:30pm-08:15pm	ONLINE - ONLINE	Lee, Eugene
<i>Class is 14 hours per week. Live online class meetings MTWTh 6:30-8:15p (1/17-5/26/23). Zoom link and independent coursework in Canvas.</i>					

ESL Integrated Skills, Advanced

ESLA 234

This is a four-skill language course using topics and information sources related to students' lives, experiences and goals. Students will expand English fluency in reading, writing, listening and speaking by acquiring new vocabulary and applying learned grammatical structures. In this course, students will apply learned language skills to accessing community resources and being an active community participant. Language acquisition and practice is focused on helping students feel competent and capable in their communities. Civics topics will be chosen each term based on the needs of the students.

CRN	Dates	Days	Time	Location	Instructor
In-Person Classes					
61302	1/13 - 5/25	MTWTh	08:30am-11:50am	Anaheim Campus - 410	Cruz, Cassandra
61536	1/13 - 5/25	MTWTh	06:00pm-09:20pm	Anaheim Campus - 112	Staff
61537	1/13 - 5/25	MTWTh	08:30am-11:50am	Cypress Tech Ed 2 - 217	Wasby, Roger
61539	1/13 - 5/25	MTWTh	08:30am-11:50am	Wilshire NOCE 200 BLDG - 217	Staff
Online Classes					
61378	1/13 - 5/26	MTWTh	09:00am-10:30am	ONLINE - ONLINE	Filloy, Eileen
<i>Class is 12 hours per week. Live online class meetings MTWTh 9:00-10:30a (1/17-5/26/23). Zoom link and independent coursework in Canvas.</i>					
61379	1/13 - 5/26	MTWTh	09:00am-10:30am	ONLINE - ONLINE	Nguyen, Sophie
<i>Class is 14 hours per week. Live online class meetings MTWTh 9:00-10:30a (1/17-5/26/23). Zoom link and independent coursework in Canvas.</i>					
61382	1/13 - 5/26	MTWTh	06:30pm-08:00pm	ONLINE - ONLINE	Kunimoto, Trisha
<i>Class is 14 hours per week. Live online class meetings MTWTh 6:30-8:00p (1/17-5/26/23). Zoom link and independent coursework in Canvas.</i>					
61383	1/13 - 5/26	MTWTh	06:30pm-08:00pm	ONLINE - ONLINE	Santostefano, Michela
<i>Class is 14 hours per week. Live online class meetings MTWTh 6:30-8:00p (1/17-5/26/23). Zoom link and independent coursework in Canvas.</i>					
61381	1/13 - 5/26	MTWTh	06:30pm-08:00pm	ONLINE - ONLINE	Usary, Danny
<i>Class is 14 hours per week. Live online class meetings MTWTh 6:30-8:00p (1/17-5/26/23). Zoom link and independent coursework in Canvas.</i>					

ESL for Community Involvement, Beginning**ESLA 260**

This course covers beginning level English to adult learners. The focus is on instruction that addresses the students' personal, family and community-based goals appropriate to their emerging language abilities. It develops beginning level listening, speaking, reading, and writing skills to prepare students to function successfully in the community.

CRN	Dates	Days	Time	Location	Instructor
61401	1/13 - 5/25	MTWTh	06:00pm-09:20pm	Cypress Tech Ed 2 - 221	Doherty, Doreen
61403	1/13 - 5/25	MTWTh	06:00pm-08:50pm	Wilshire NOCE 200 BLDG - 217	Amirehteshami, Marina

ESL for Community Involvement, Intermediate to Advanced**ESLA 261**

This course covers intermediate-advanced level English to adult learners. The focus is on instruction that addresses the students' personal, family and community-based goals appropriate to their developing language abilities. It develops intermediate-advanced level listening, speaking, reading, and writing skills to prepare students to function fully in the community.

CRN	Dates	Days	Time	Location	Instructor
61319	1/13 - 5/25	MTWTh	06:00pm-09:20pm	Cypress Tech Ed 2 - 219	Yang, Samuel
61329	1/13 - 5/25	MTWTh	06:00pm-08:50pm	Wilshire NOCE 200 BLDG - 219	Hug, Daniel

ESL Academic Success / Transition to College**ESL for Academic Success: Reading and Writing I****ESLA 1060**

Acquire reading and writing skills for academic success in higher-level academic ESL courses, college, high school, GED, or career technical education programs. Students will participate in a variety of writing and reading activities on high-interest academic topics. Skills covered include reading for main ideas/details, sentence patterns and the writing process.

CRN	Dates	Days	Time	Location	Instructor
61345	1/13 - 3/17	MTWTh	10:00am-11:45am	ONLINE - ONLINE	Pederson, Blake
<i>Class is 14 hours per week. Live online class meetings MTWTh 10:00-11:45a (1/17-3/17/23). Zoom link and independent coursework in Canvas.</i>					
61548	3/27 - 5/26	MTWTh	08:30am-10:15am	ONLINE - ONLINE	Palacio, Daniel
<i>Class is 14 hrs/wk. Live online class meetings MTWTh 8:30-10:15 am (3/27-5/26/23). Zoom link and independent coursework in Canvas.</i>					

ESL for Academic Success: Listening and Speaking I**ESLA 1062**

Acquire listening and speaking skills necessary for academic success in higher level academic ESL courses, college, high school, GED, or career technical education programs. Students will participate in a variety of listening and speaking activities on high-interest academic topics. Skills covered include listening to lectures, note taking, presentation skills and critical thinking.

CRN	Dates	Days	Time	Location	Instructor
In-Person Classes					
61312	1/13 - 5/24	MTW	06:00pm-08:05pm	Anaheim Campus - 410	Serrano, Helen
Online Classes					
61544	1/13 - 3/17	MTWTh	08:30am-10:15am	ONLINE - ONLINE	Palacio, Daniel
<i>Class is 14 hours per week. Live online class meetings MTWTh; 8:30-10:15 am (1/13-3/17/23). Zoom link and independent coursework in Canvas.</i>					
61346	3/27 - 5/26	MTWTh	10:00am-11:45am	ONLINE - ONLINE	Pederson, Blake
<i>Class is 14 hours per week. Live online class meetings MTWTh 10:00-11:45a (3/27-5/26/23). Zoom link and independent coursework in Canvas.</i>					

English and U.S. Citizenship

ESL for Academic Success: Reading and Writing II

ESLA 1065

Prerequisite: ESLA 500 ESL Intermediate High or ESLA 1060 ESL for Academic Success: Reading and Writing I. Acquire reading, writing, note-taking, test-taking, critical thinking, and computer skills necessary for academic success in college, high school, GED, or career technical education programs. Learn American cultural norms in the classroom. Participate in campus life through field trips to local colleges. For advanced level ESL students.

CRN	Dates	Days	Time	Location	Instructor
In-Person Classes					
61290	1/13 - 5/25	MTWTh	08:00am-10:20am	Anaheim Campus - 119	Mang, Cathee
Online Classes					
61407	1/13 - 3/17	MTWTh	08:30am-10:15am	ONLINE - ONLINE	Stehly, Joann
Class is 14 hours per week. Live online class meetings MTWTh 8:30-10:15a (1/17-3/17/23). Zoom link and independent coursework in Canvas.					
61409	1/13 - 5/26	MTWTh	07:00pm-08:50pm	ZOOM - ZOOM	Urionabarrenechea, Clara

ESL for Academic Success: Listening and Speaking II

ESLA 1067

Prerequisite: ESLA 500 ESL Intermediate High or ESLA 1062 ESL for Academic Success: Listening and Speaking I. ESL students will practice the listening and speaking skills ESL students will practice the listening and speaking skills needed in a post-secondary academic setting, including listening to academic lectures, taking notes, participating in class discussions, giving presentations, and taking exams. Students will practice the technological skills needed for academic success and experience campus life through field trips to local colleges. For advanced level ESL students.

CRN	Dates	Days	Time	Location	Instructor
In-Person Classes					
61289	1/13 - 5/26	MTWTh	10:30am-12:50pm	Anaheim Campus - 119	Mang, Cathee
Online Classes					
61408	3/27 - 5/26	MTWTh	08:30am-10:15am	ONLINE - ONLINE	Stehly, Joann
Class is 14 hours per week. Live online class meetings MTWTh 8:30-10:15a (3/27-5/26/23). Zoom link and independent coursework in Canvas.					

Citizenship Preparation

Citizenship Preparation, Beginning

ESLA 850

This beginner course prepares students for the US citizenship process. Students examine required forms for naturalization and prepare for their USCIS Citizenship Interview by practicing the USCIS Civics Questions, conversation strategies, and dictation. This course focuses on writing simple sentences, developing fluency in speaking and listening, and producing accurate pronunciation.

CRN	Dates	Days	Time	Location	Instructor
61388	1/13 - 5/26	MW	08:30am-10:20am	ZOOM - ZOOM	Hong, Song

Citizenship Preparation, Intermediate-Advanced

ESLA 851

This intermediate/advanced course prepares students for the US citizenship process. Students examine required forms for naturalization and prepare for the USCIS Citizenship Interview by practicing the USCIS Civics Questions, conversation strategies, and dictation. This course focuses on writing paragraphs with complex sentences while refining accuracy in speaking, listening, and pronunciation.

CRN	Dates	Days	Time	Location	Instructor
In-Person Classes					
61389	1/13 - 5/26	TTh	05:00pm-06:50pm	ZOOM - ZOOM	Khssassi, Zineb
Online Classes					
61292	1/13 - 5/26	F	08:30am-11:30am	ONLINE - ONLINE	Lopez, Corinna
Class is 5 hrs/wk. Live online class meetings F 8:30-11:30a (1/13-5/27/23). Zoom link and independent coursework in Canvas.					

ESL Specialty Classes for Beginning Students

American Idioms, Beginning

ESLA 250

This course aims at developing language skills through the use of common North American English idioms and expressions. Receptive skills (i.e., listening and reading) are emphasized through exposure to daily life experiences.

CRN	Dates	Days	Time	Location	Instructor
61391	1/13 - 5/26	F	08:30am-11:20am	ZOOM - ZOOM	Jackson, Julia

ESL and Computer Skills, Beginning

ESLA 801

The course introduces ESL students to hands-on exploration and use of current Microsoft Windows programs. Students will learn basic computer parts, keyboarding, and the basics of MS Word, PowerPoint, Print Shop, and Excel. Emphasis is on building confidence in computer use to improve English skills in grammar, vocabulary, writing, speaking, pronunciation, and reading.

CRN	Dates	Days	Time	Location	Instructor
61386	1/13 - 5/26	F	08:30am-10:45am	ZOOM - ZOOM	Carson, Gerald
61387	1/13 - 5/26	F	10:45am-01:00pm	ZOOM - ZOOM	Peterson, Lucas

ESL Grammar Review, Beginning

ESLA 222

This course will teach the meanings and usages of basic English grammar structures that are frequently used in everyday situations. Students will learn how to apply grammar rules through oral and written communication. This class is designed for ESL students placed in the beginning low and beginning high levels.

CRN	Dates	Days	Time	Location	Instructor
61394	1/13 - 5/26	F	09:00am-11:50am	ZOOM - ZOOM	Sattler, Tracy

ESL Speaking Skills, Beginning

ESLA 182

This course is designed to help English language learners at a beginning level develop and build fluency in speaking. The class will focus on accurate pronunciation and different types of spoken language used in every day situations.

CRN	Dates	Days	Time	Location	Instructor
In-Person Classes					
61439	1/13 - 5/25	T Th	06:00pm-08:20pm	Anaheim Campus - 108	Nam, Victorya
Online Classes					
61358	1/13 - 5/26	M W	11:30am-12:45pm	ZOOM - ZOOM	Azarcon, Cynthia
61359	1/13 - 5/26	T Th	11:30am-12:45pm	ZOOM - ZOOM	Pico, Karina
61360	1/13 - 5/26	T Th	05:15pm-06:15pm	ZOOM - ZOOM	Kunimoto, Trisha

ESL Vocabulary Review, Beginning

ESLA 225

Students will review, expand, and retain basic vocabulary words and phrases organized by commonly used topics. Students will work on using approximately fifteen practical target words per class in oral and written exercises. This course is designed for the ESL students placed in the Beginning Low and Beginning High levels.

CRN	Dates	Days	Time	Location	Instructor
61384	1/13 - 5/26	M W	05:15pm-06:15pm	ZOOM - ZOOM	Smith, Marlo

ESL Writing Skills, Beginning

ESLA 185

This ESL course will acquaint students with writing skills required to develop basic-level writing techniques by focusing on sentence structure, parts of a sentence, topic sentences, body sentences and concluding sentences.

CRN	Dates	Days	Time	Location	Instructor
61392	1/13 - 5/26	T Th	11:30am-12:45pm	ZOOM - ZOOM	Nguyen, Sophie

ESL Specialty Classes for Intermediate-Advanced Students

American Idioms, Intermediate - Advanced					ESLA 251
This course aims at developing language skills through the use of common North American English idioms and expressions. Productive skills (i.e., speaking and writing) are emphasized by sharing daily life experiences.					
CRN	Dates	Days	Time	Location	Instructor
61492	1/13 - 5/26	M W	11:30am-12:35pm	ZOOM - ZOOM	Filloy, Eileen

ESL and Computer Skills, Intermediate - Advanced					ESLA 815
Students will enhance their English language skills through challenging computer application tasks using MS Word, PowerPoint, Print Shop, Excel, the Internet, and MS Publisher. Emphasis is on building confidence in independent projects to improve English skills in grammar, vocabulary, writing, and reading. Students will be actively involved in computer projects linking the academic environment with their communities.					
CRN	Dates	Days	Time	Location	Instructor
61398	1/13 - 3/17	F	08:30am-12:20pm	ZOOM - ZOOM	Alvarez-Morales, Angela
61399	3/27 - 5/26	F	08:30am-12:20pm	ZOOM - ZOOM	Alvarez-Morales, Angela

ESL Grammar Review, Intermediate - Advanced					ESLA 223
This course will teach the meanings and usages of advanced English grammar structures that are frequently used in everyday situations. Students will learn how to apply grammar rules in oral and written communication. This class supplements core ESL courses and is designed for ESL students placed in the intermediate and advanced levels.					
CRN	Dates	Days	Time	Location	Instructor
61395	1/13 - 5/26	M W	11:30am-12:45pm	ZOOM - ZOOM	Kopydlowska, Grazyna
61396	1/13 - 5/26	T	11:30am-01:45pm	ZOOM - ZOOM	Hasan, Fouton
61397	1/13 - 5/26	T Th	05:15pm-06:15pm	ZOOM - ZOOM	Pederson, Blake

ESL Speaking Skills, Intermediate - Advanced					ESLA 183
This course is designed to help English language learners at the intermediate to advanced level develop and build accuracy and fluency in speaking. The class will focus on different types of spoken language, conversation strategies, pronunciation skills and everyday speaking situations.					
CRN	Dates	Days	Time	Location	Instructor
In-Person Classes					
61291	1/13 - 5/25	M Th	02:00pm-04:20pm	Anaheim Campus - 119	Mang, Cathee
61313	1/13 - 5/22	M	06:00pm-08:50pm	Anaheim Campus - 108	Labiento, John
61440	1/13 - 5/24	W	05:30pm-08:20pm	Anaheim Campus - 108	Noor, Dulce
Online Classes					
61364	1/13 - 5/26	M W	05:15pm-06:15pm	ZOOM - ZOOM	Gray, Richard
61362	1/13 - 5/26	T Th	11:30am-12:45pm	ZOOM - ZOOM	Moore, Catherine
61363	1/13 - 5/26	T Th	05:15pm-06:15pm	ZOOM - ZOOM	Espinoza, Maria
61361	1/13 - 5/26	F	09:00am-11:20am	ZOOM - ZOOM	Sahakian, Souzan

ESL Vocabulary Review, Intermediate - Advanced					ESLA 226
Students will review, expand, and retain vocabulary words and phrases organized by commonly used topics. Students will work on using approximately twenty-five practical target words per class in oral and written exercises. This course is designed for the ESL students placed in the Intermediate Low, Intermediate High, and Advanced levels.					
CRN	Dates	Days	Time	Location	Instructor
61385	1/13 - 5/26	T Th	11:00am-12:00pm	ZOOM - ZOOM	Myers, Victoria

ESL Writing Skills, Intermediate - Advanced**ESLA 186**

This ESL course will acquaint intermediate to advanced students with writing techniques by focusing on pre-writing, outlining, drafting, revising and editing.

CRN	Dates	Days	Time	Location	Instructor
In-Person Classes					
61315	1/13 - 5/24	MTW	08:15pm-09:05pm	Anaheim Campus - 410	Serrano, Helen
Online Classes					
61393	1/13 - 5/26	T Th	05:15pm-06:15pm	ZOOM - ZOOM	Stasiuk, Pedro

ESL Skill Building, Intermediate - Advanced**ESLA 211**

The course content is relevant to the lives of students. It integrates language functions and language forms with informational sources, skills and topics. Course topics will include the process and skills needed to seek employment as well as norms in the American workforce. The course will also cover planning, traveling and finances as skills needed to function in society. Students will use the above topics to build on reading comprehension, vocabulary, listening, speaking, writing and technology skills in an online environment. Students will be required to attend an orientation and take the CASAS assessment on campus.

CRN	Dates	Days	Time	Location	Instructor
61294	1/13 - 5/26	M	08:00am-09:00am	ZOOM - ZOOM	Diaz, Carlos
<i>Class is 10 hrs/wk. Live online class meetings M 8:00-9:00a (1/17-5/26/23). Zoom link and independent coursework in Canvas.</i>					

ESL Community-Based / Off-Site Classes**ESL for Community Involvement, Beginning****ESLA 260**

This course covers beginning level English to adult learners. The focus is on instruction that addresses the students' personal, family and community-based goals appropriate to their emerging language abilities. It develops beginning level listening, speaking, reading, and writing skills to prepare students to function successfully in the community.

CRN	Dates	Days	Time	Location	Instructor
Access California					
61330	1/30 - 5/25	MTWTh	09:00am-12:20pm	Access California Services	Staff
Anaheim Union High School District (AUHSD)					
61339	1/30 - 5/25	MTWTh	06:00pm-08:50pm	Ball Junior High School	Williams, Jodie
61342	1/13 - 5/25	TWTh	06:00pm-09:20pm	Sycamore Junior High School	Staff
City of Brea					
61333	1/13 - 5/25	TWTh	08:30am-11:50am	Brea Community Center	Betts, Robert
City of Anaheim					
61441	1/30 - 5/25	MTWTh	08:30am-11:20am	Anaheim Community Center	Staff
61336	1/13 - 5/25	TWTh	08:30am-11:50am	Ponderosa Park Family Resource Ctr	Arellano, German
Higher Ground Youth & Family Services					
61334	1/30 - 5/25	MTWTh	08:30am-11:50am	Higher Ground Youth Family Services	Zabayle, Zachary
OC United					
61496	1/13 - 5/25	MTWTh	06:30pm-09:20pm	Gilbert Community Center	Staff
61494	1/13 - 5/25	TWTh	08:30am-11:50am	Valencia Park Elementary School	Staff
Palm Lane Global Academy					
61543	1/30 - 5/25	MTWTh	08:30am-11:20am	Palm Lane Elementary School	Staff
Placentia-Yorba Linda Unified School District (PYLUSD)					
61337	1/30 - 5/25	MTWTh	08:15am-11:05am	Rio Vista Elementary School	Allen, Cindy
61338	1/30 - 5/25	MTWTh	08:15am-11:05am	Topaz Elementary School	Jackson, Julia
St. Boniface Church					
61405	1/30 - 5/25	MTWTh	08:30am-11:20am	St Boniface Church	Staff

ESL for Community Involvement, Intermediate - Advanced **ESLA 261**

This course covers intermediate-advanced level English to adult learners. The focus is on instruction that addresses the students' personal, family and community-based goals appropriate to their developing language abilities. It develops intermediate-advanced level listening, speaking, reading, and writing skills to prepare students to function fully in the community.

CRN	Dates	Days	Time	Location	Instructor
Access California					
61331	1/13 - 5/25	MTWTh	08:30am-11:50am	Valencia Park Elementary School	Staff



ESL and Computer Skills, Beginning **ESLA 801**

The course introduces ESL students to hands-on exploration and use of current Microsoft Windows programs. Students will learn basic computer parts, keyboarding, and the basics of MS Word, PowerPoint, Print Shop, and Excel. Emphasis is on building confidence in computer use to improve English skills in grammar, vocabulary, writing, speaking, pronunciation, and reading.

CRN	Dates	Days	Time	Location	Instructor
61489	1/30 - 3/15	M W	04:30pm-07:20pm	Higher Ground Youth Family Services	Arellano, German
61490	3/27 - 5/24	M W	04:30pm-07:20pm	Higher Ground Youth Family Services	Arellano, German

ESL Speaking Skills, Beginning **ESLA 182**

This course is designed to help English language learners at a beginning level develop and build fluency in speaking. The class will focus on accurate pronunciation and different types of spoken language used in every day situations.

CRN	Dates	Days	Time	Location	Instructor
Anaheim Union High School District (AUHSD)					
61341	1/13 - 5/22	M	06:00pm-08:50pm	Sycamore Junior High School	Staff
Centralia Elementary School District (CESD)					
61542	1/13 - 5/22	M	06:30pm-09:20pm	Danbrook Elementary School	Wing, Lisa
City of Anaheim					
61335	1/13 - 5/22	M	08:30am-10:50am	Ponderosa Park Family Resource Ctr	Macias-Reza, Teresa
City of Brea					
61332	1/13 - 5/22	M	08:30am-11:20am	Brea Community Center	Betts, Robert
OC United					
61493	1/13 - 5/22	M	08:30am-11:20am	Valencia Park Elementary School	Staff

Career Pathways for English Language Learners

Career Pathways Programs for English Language Learners include one English teacher and one job skills teacher. These career education programs are open to Intermediate High and Advanced level English as a Second Language (ESL) students. These programs offer both career and English lessons, allowing students to achieve goals faster.

- Learn English and job skills at the same time
- Earn two state-approved certificates
- Access textbook and laptop loan options
- Build confidence
- Get higher pay
- Apply for better jobs



Spring 2023: Business Information Worker I (BIW)

Learn to provide entry-level office and administrative support in a variety of job positions, including general office support, retail sales, customer service, receptionist, information clerks, and more. In this program, you will learn skills such as:

- Communication for office settings
- Microsoft Office (Word, PowerPoint, Excel, etc.)
- Bookkeeping and budgeting
- Administrative tasks such as file management, payroll, and more

BIW Median Hourly Wage*: \$19.14

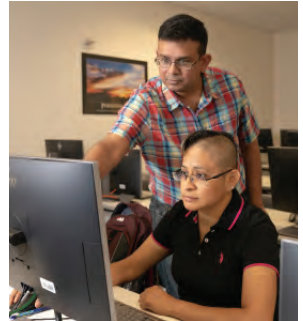
*Median hourly wage is the average between highest-paid 50% and lowest-paid 50%. Most students will start at entry-level wages. Taken from the EDD Occupational employment & wage data as of June 2021 data.

Class Structure, Dates, Times

This program is 16 hours/week for the full semester, **January 13 - May 26, 2023**. 10 hours/week are live online class meetings with your teachers and classmates in Zoom:

- Mondays, 9 a.m. – 12 p.m.
- Tuesday, 9 a.m. – 12 p.m.
- Wednesdays, 9 a.m. – 10 a.m.
- Thursday, 9 a.m. – 12 p.m.

The remaining 6 hours/week require independent coursework in Canvas. Students **MUST** commit to attending the whole 18-week semester for 16 total hours per week.



Information Session

Want to learn more about the Career Pathways for English Language Learners? Join us at an information session: noce.edu/info-sessions

Registration

To register for this program, or for more information: ESL4ALL@noce.edu; [714.808.4638](tel:714.808.4638) or noce.edu/esl/careerpathways



ACTIVE OLDER ADULTS/EMERITUS

Designed for adults age 50 and older, but open to anyone 18+.

Empower independence, advocacy, physical and cognitive health, economic self-sufficiency, and community engagement.

Explore noce.edu/emmeritus.



Need Translated Instructions?

¿Necesita instrucciones traducidas?

Haga clic en "Traducir" en la esquina superior derecha de la página. Seleccione su idioma para traducir el sitio. O llame al 714.808.4679 para obtener más ayuda.

Program Overview

Stay Vibrant with Emeritus Classes

Emeritus Program Classes

- Creative writing and music arts.
- Creative arts classes include needlework, sewing, quilting, and painting.
- Mind and body classes include health and wellness, nutrition, and brain health.
- Enrichment classes boost improvement for residents at skilled care facilities.

Safety: Mature Driver Courses

The Mature Driver Improvement course is tailored to older adults and includes defensive driving and California motor vehicle laws. Also covered, effects that medication, fatigue, alcohol, and visual or auditory limitations have on driving ability. Mature drivers age 55 or older, who successfully complete an approved mature driver improvement course, may qualify for reduced motor vehicle insurance premiums.

Ready to Get Started?

Once you've applied to NOCE...

1. If attending classes at community/senior centers
 - Register for classes online using myGateway at noce.edu/mygateway. Check out noce.edu/registration-info for details.
 - Attend class in person on the date, time, and at the location listed in the class schedule. Students will follow the COVID-19 protocols based on the community location they attend. More information at noce.edu/vaccine.
2. If attending classes at skilled nursing, rehabilitation centers, or memory care centers
 - Available for residents only should there be a COVID-19 outbreak.

Have Questions about Classes

Call the Emeritus Program

714.808.4909 or emeritus@noce.edu.

Need Registration Help?

Call StarHelp

714.808.4679 or starhelp@noce.edu.

★ NOTE

As of January 1, 2023, the COVID-19 vaccination is no longer required, but is still strongly recommended for all persons visiting NOCCCD campuses. Classes held at off-site, community locations must adhere to the location's COVID-19 health guidelines. More information at noce.edu/vaccine.

Mature Driver Classes

Please register online as soon as possible prior to the start of the class. We would most prefer online registration, but walk-in registrations will only be accepted if the class is still open and not full at that location. Low enrollment will cause the class to be cancelled three (3) days prior to the scheduled class start date. Please see pages 7-8 for community location addresses. For questions or assistance with **REGISTRATION**, please contact StarHelp on Monday through Friday at 714.808.4679 or starhelp@noce.edu.



Mature Driver Improvement SAFE 205

The Mature Driver Improvement course provides instruction, specifically tailored to older drivers, regarding defensive driving and California motor vehicle laws. During this course, information is provided on the effects that medication, fatigue, alcohol, and visual or auditory limitations have on a person's safe driving ability. Present the DMV certificate to your insurer as proof that you have completed the course. Mature drivers age 55 or older, who successfully complete an approved Mature Driver Improvement Course, may qualify for reduced motor vehicle insurance premiums.

CRN	Dates	Days	Time	Location	Instructor
60952	2/8 - 2/9	W Th	01:00pm-04:50pm	Brea Senior Center	Marlowe, Walter
61482	1/30 - 1/31	M T	01:00pm-04:50pm	Buena Park Senior Center	Marlowe, Walter
61483	4/24 - 4/25	M T	01:00pm-04:50pm	Buena Park Senior Center	Marlowe, Walter
60947	3/1 - 3/2	W Th	01:00pm-04:50pm	Cypress Senior Citizen Center	Marlowe, Walter
60949	5/3 - 5/4	W Th	01:00pm-04:50pm	Cypress Senior Citizen Center	Marlowe, Walter
60933	1/18 - 1/19	W Th	01:00pm-04:50pm	Fullerton Community Center	Marlowe, Walter
60954	3/11 - 3/11	S	08:00am-11:50am	La Habra Community Serv-Sr Center	Marlowe, Walter
	3/11 - 3/11	S	12:30pm-04:20pm	La Habra Community Serv-Sr Center	Marlowe, Walter
61481	5/13 - 5/13	S	08:00am-11:50am	La Habra Community Serv-Sr Center	Marlowe, Walter
	5/13 - 5/13	S	12:30pm-04:20pm	La Habra Community Serv-Sr Center	Marlowe, Walter
60953	2/6 - 2/7	M T	01:00pm-04:50pm	La Palma Community Center	Marlowe, Walter
61480	5/8 - 5/9	M T	01:00pm-04:50pm	La Palma Community Center	Marlowe, Walter
60962	2/11 - 2/11	S	08:00am-11:50am	Leisure World Seal Beach	Marlowe, Walter
	2/11 - 2/11	S	12:30pm-04:20pm	Leisure World Seal Beach	Marlowe, Walter
Class will be held at Club House # 3, Learning Center					
60867	2/4 - 2/4	S	01:00pm-04:50pm	Sr Citizens Center Anaheim	Marlowe, Walter
	2/4 - 2/4	S	08:30am-12:20pm	Sr Citizens Center Anaheim	Marlowe, Walter
61479	5/6 - 5/6	S	01:00pm-04:50pm	Sr Citizens Center Anaheim	Marlowe, Walter
	5/6 - 5/6	S	08:30am-12:20pm	Sr Citizens Center Anaheim	Marlowe, Walter
60939	3/15 - 3/16	W Th	01:00pm-04:50pm	Yorba Linda Senior Center	Marlowe, Walter
60944	5/17 - 5/18	W Th	01:00pm-04:50pm	Yorba Linda Senior Center	Marlowe, Walter

Communication

Books Come Alive for Older Adults

ENCO 180

"Books Come Alive" is an intellectually and socially rewarding activity designed for older adults in which outstanding works of fiction/non-fiction are read and discussed. Through the method of shared inquiry, along with thought-provoking questions, older adult students are offered exciting opportunities for self-discovery and personal growth.

CRN	Dates	Days	Time	Location	Instructor
60339	1/17 - 5/23	T	09:30am-11:20am	Gordon Lane Care Center	Hertogh, Lorna

Creative Writing for Seniors

ABE 240

This course for older adults teaches both beginning and experienced writers how to create shape autobiographies, fiction and non-fiction writing, and poetry into readable and publishable forms.

CRN	Dates	Days	Time	Location	Instructor
60411	1/17 - 5/23	T	06:30pm-08:20pm	Morningside of Fullerton	Edwards, June
61233	1/17 - 5/23	T	01:00pm-02:50pm	Cypress Sr Citizen Center	Edwards, June

Journey Back Into Time for Older Adults

ENCO 501

This class offers older adults students the opportunity to explore and share their personal histories, cultures, and values among older adult students through group discussion. Shared experiences, memories and linking the past with the present, encourage self-awareness, positive self-esteem, mental stimulation, and enjoyment.

CRN	Dates	Days	Time	Location	Instructor
61430	1/19 - 5/25	Th	05:00pm-06:50pm	Rowntree Gardens	Miller, Joy
60736	1/23 - 5/22	M	02:00pm-03:50pm	West Anaheim Extended Care Hospital	Miller, Joy

Senior Topics For Older Adults

EDEN 100

This course presents older adults with various topics for discussion and class activities based on the students' individual interest, backgrounds, physical and mental abilities. Older adults are encouraged to share and compare life experiences, and learn about international, national and local events and issues from a current and historical viewpoint.

CRN	Dates	Days	Time	Location	Instructor
60418	1/18 - 5/24	W	10:00am-11:50am	Bonita Hills Post Acute	Johnson, Lisa
60727	1/13 - 5/26	F	02:30pm-04:20pm	Brookdale Anaheim	Gomes, Mary
60265	1/19 - 5/25	Th	03:00pm-04:50pm	Brookdale Anaheim	Fischer, Hildy
60838	1/23 - 5/22	M	01:00pm-02:50pm	Buena Park Nursing Center	Harris, Amy
60856	1/13 - 5/26	F	10:30am-12:20pm	Buena Park Senior Center	Lange-Goldstein, Laureen
61446	1/13 - 5/26	F	09:30am-11:20am	Buena Vista Care Center	Gomes, Mary
61433	1/17 - 5/23	T	01:30pm-03:20pm	Buena Vista Care Center	Hertogh, Lorna
60837	1/17 - 5/23	T	01:00pm-02:50pm	Cambridge Court	Harris, Amy
60836	1/13 - 5/26	F	09:30am-11:20am	Chapman Care Center	Harris, Amy
60263	1/17 - 5/23	T	12:30pm-02:20pm	Cottage of Artesia Gardens	Fischer, Hildy
60423	1/17 - 5/23	T	01:30pm-03:20pm	Crescent Landing Garden Grove	Johnson, Lisa
60280	1/17 - 5/23	T	09:30am-11:20am	Emerald Court	Gable, Mary
60264	1/18 - 5/24	W	03:00pm-04:50pm	Emerald Court	Fischer, Hildy
60274	1/13 - 5/26	F	03:15pm-05:05pm	Gordon Lane Care Center	Gable, Mary
61163	1/13 - 5/23	Th	01:45pm-03:35pm	Harvest Retirement	Miller, Joy
60273	1/17 - 5/23	T	09:00am-10:50am	Ivy Park at Bradford	Johnson, Lisa
60343	1/13 - 5/26	F	10:00am-11:50am	Karlton Residential Care Center	Hertogh, Lorna
60266	1/13 - 5/23	W	02:30pm-04:20pm	Katella Sr Living Community	Fischer, Hildy
60731	1/13 - 5/23	T	03:00pm-04:50pm	Katella Sr Living Community	Gomes, Mary
60840	1/18 - 5/24	W	09:30am-11:20am	La Palma Nursing Center	Harris, Amy
60737	1/18 - 5/24	W	02:00pm-03:50pm	Leisure Court	Miller, Joy
60739	1/18 - 5/24	W	05:30pm-07:20pm	Leisure Court	Miller, Joy
60725	1/13 - 5/26	F	10:00am-11:50am	Leisure World Seal Beach	Bloom, Danielle
Class will be held at Club House # 3 (Learning Center)					
60728	1/18 - 5/24	W	01:30pm-03:20pm	Palm Retirement Center	Gomes, Mary
60738	1/17 - 5/23	T	03:00pm-04:50pm	Park Anaheim Healthcare Center	Miller, Joy
60741	1/17 - 5/23	T	06:00pm-07:50pm	Park Anaheim Healthcare Center	Miller, Joy
60732	1/18 - 5/24	W	10:00am-11:50am	Park Anaheim Healthcare Center	Gomes, Mary
60279	1/23 - 5/22	M	01:00pm-02:50pm	Park Regency Ret Res	Gable, Mary
60422	1/19 - 5/25	Th	09:00am-11:50am	Park Vista Assisted Living	Johnson, Lisa

Senior Topics For Older Adults (con't)

EDEN 100

CRN	Dates	Days	Time	Location	Instructor
60730	1/19 - 5/25	Th	01:30pm-03:20pm	Park Vista Assisted Living	Gomes, Mary
60277	1/18 - 5/24	W	01:30pm-03:20pm	Park Vista at Morningside	Gable, Mary
60419	1/23 - 5/22	M	10:00am-11:50am	Park Vista at Morningside	Johnson, Lisa
60740	1/23 - 5/22	M	05:00pm-06:50pm	Rowntree Gardens	Miller, Joy
60276	1/13 - 5/26	F	09:45am-11:35am	Serento Rosa Senior Living	Gable, Mary
60417	1/23 - 5/22	M	02:00pm-03:50pm	St. Catherine	Johnson, Lisa
60841	1/13 - 5/26	F	01:30pm-03:20pm	St. Elizabeth Healthcare	Harris, Amy
60275	1/19 - 5/25	Th	09:45am-11:35am	St. Elizabeth Healthcare	Gable, Mary
60713	1/18 - 5/24	W	09:30am-11:20am	Summer House at Walnut Village	Gable, Mary
61222	1/18 - 5/24	W	01:30pm-03:20pm	Summer House at Walnut Village	Harris, Amy
60842	1/23 - 5/22	M	06:00pm-07:50pm	Summer House at Walnut Village	Harris, Amy
60301	1/19 - 5/25	Th	03:15pm-05:05pm	Sun Mar Nursing Center	Kim, Hannah
60734	1/17 - 5/23	T	09:30am-11:20am	Sunrise Assisted Living Fullerton	Gomes, Mary
60340	1/19 - 5/25	Th	09:30am-11:20am	Sunrise Assisted Living Fullerton	Hertogh, Lorna
61235	1/13 - 5/26	F	02:30pm-04:20pm	The Grove Post Acute	Kim, Hannah
60420	1/18 - 5/24	W	01:00pm-02:50pm	The Pavilion at Sunny Hills	Johnson, Lisa
60342	1/19 - 5/25	Th	01:00pm-02:50pm	The Pavilion at Sunny Hills	Hertogh, Lorna
60278	1/23 - 5/22	M	03:15pm-05:05pm	The Pavilion at Sunny Hills	Gable, Mary
61428	1/19 - 5/25	Th	12:30pm-02:20pm	Westmont Cypress Compass Rose	Fischer, Hildy
60733	1/16 - 5/22	M	09:30am-11:20am	Windsor Gardens of Anaheim	Gomes, Mary

Creative Arts

Needlecrafts, Knitting, Crochet for Older Adults

CRAE 104

Older adult students will learn the practical application, knowledge, and skills required to create knitted, crocheted, needlepoint, and cross-stitched hand-made items. A wide variety of items are created, by older adult students, including decorations for the home and clothing for babies, children and adults.

CRN	Dates	Days	Time	Location	Instructor
60257	1/19 - 5/25	Th	09:00am-10:50am	Fullerton Community Center	Bowman, Ashley
61241	1/18 - 5/24	W	02:00pm-03:50pm	Leisure World Seal Beach	Bowman, Ashley
60255	1/19 - 5/25	Th	01:00pm-02:50pm	Yorba Linda Sr Center	Bowman, Ashley

Ceramics for Older Adults

CRAE 101

This course in basic ceramics for older adults includes lecture, demonstration and application of ceramic artwork. Student will learn mold selection, glazing, decorating techniques, and proper firing procedures. Will learn mold selection, glazing, decorating techniques, and proper firing procedures. Individual artistic creativity is encouraged and completed art projects of the older adult student are often displayed publicly.

CRN	Dates	Days	Time	Location	Instructor
61602	1/18 - 3/15	W	08:00am-11:50am	Buena Park Senior Center	Staff
61603	3/29 - 5/24	W	08:00am-11:50am	Buena Park Senior Center	Staff
<i>Students must enroll in both CRN 61602 and CRN 61603 to complete a semester.</i>					
60571	1/19 - 3/23	Th	08:00am-11:50am	Buena Park Senior Center	Trapani, Cheryl
60574	3/30 - 5/25	Th	08:00am-11:50am	Buena Park Senior Center	Trapani, Cheryl
<i>Students must enroll in both CRN 60571 and CRN 60574 to complete a semester.</i>					
60573	1/17 - 3/14	T	12:50pm-04:40pm	Cypress Sr Citizen Center	Trapani, Cheryl
60575	3/28 - 5/23	T	12:50pm-04:40pm	Cypress Sr Citizen Center	Trapani, Cheryl
<i>Students must enroll in both CRN 60573 and CRN 60575 to complete a semester.</i>					
61225	1/16 - 3/14	T	08:30am-12:20pm	Leisure World Seal Beach	Trapani, Cheryl
61226	3/28 - 5/23	T	08:30am-12:20pm	Leisure World Seal Beach	Trapani, Cheryl
<i>Students must enroll in both CRN 61225 and 61226 to complete a semester.</i>					
<i>Class will be held at Club House # 4 (Ceramic Studio)</i>					
60572	1/19 - 3/23	Th	12:45pm-04:35pm	Leisure World Seal Beach	Trapani, Cheryl
60570	3/30 - 5/25	Th	12:45pm-04:35pm	Leisure World Seal Beach	Trapani, Cheryl
<i>Students must enroll in both CRN 60570 and 60572 to complete a semester.</i>					
<i>Class will be held at Club House # 4 (Ceramic Studio)</i>					

Creative Arts for Older Adults**CRAE 100**

This class for older adults encourages art appreciation, self-expression, and creativity through a variety of art media. Projects are designed to expose older adult students to artistic design, and to give experience with different artistic methods, techniques, tools, and materials.

CRN	Dates	Days	Time	Location	Instructor
60298	1/17 - 5/23	T	02:00pm-03:50pm	Alamitos West Health Care Center	Harry, Honour
61281	1/19 - 5/25	Th	11:00am-12:50pm	Anaheim Crown Plaza	Shneezai, Meena
61283	1/23 - 5/22	M	11:30am-01:20pm	Anaheim Crown Plaza	Thakkar, Nirali
60742	1/17 - 5/23	T	02:00pm-03:50pm	Bonita Hills Post Acute	Yoo, Joy
61277	1/19 - 5/25	Th	09:30am-11:20am	Brookdale Anaheim	Hyatt Solomina, Yelena
60745	1/19 - 5/25	Th	02:00pm-03:50pm	Buena Park Nursing Center	Yoo, Joy
60300	1/23 - 5/22	M	10:30am-12:20pm	Chapman Care Center	Harry, Honour
60437	1/13 - 5/23	M	02:00pm-03:50pm	Crescendo Senior Living of PI	Ngo, Tammy
60744	1/13 - 5/26	F	09:45am-11:35am	Crescent Landing Garden Grove	Yoo, Joy
61444	1/18 - 5/24	W	10:30am-12:20pm	Emerald Isle Senior Apartments	Lange-Goldstein, Laureen
60479	1/18 - 5/24	W	02:00pm-03:50pm	Gordon Lane Care Center	Thakkar, Nirali
60855	1/18 - 5/24	W	09:30am-11:20am	Harbor Villa Care Center	Harry, Honour
60743	1/23 - 5/22	M	09:30am-11:20am	Harbor Villa Care Center	Yoo, Joy
61451	1/18 - 5/24	W	02:00pm-03:50pm	Ivy Park at Bradford	Yoo, Joy
61499	1/19 - 5/25	Th	01:00pm-02:50pm	La Palma Community Center	Harry, Honour
60481	1/23 - 5/22	M	09:00am-10:50am	Leisure Court	Thakkar, Nirali
60480	1/13 - 5/26	F	02:00pm-03:50pm	Park Anaheim Healthcare Center	Thakkar, Nirali
61450	1/18 - 5/24	W	09:30am-11:20am	Park Regency Ret Res	Yoo, Joy
61449	1/19 - 5/25	Th	09:30am-11:20am	Park Vista at Morningside	Yoo, Joy
60803	1/18 - 5/24	W	01:00pm-02:50pm	Sunrise Assisted Living Fullerton	Shneezai, Meena
60762	1/21 - 5/27	S	09:30am-11:20am	Sunrise Assisted Living La Palma	Hyatt Solomina, Yelena
60860	1/19 - 5/25	Th	01:30pm-03:20pm	The Grove Post Acute	Shneezai, Meena
60761	1/21 - 5/27	S	02:00pm-03:50pm	West Anaheim Extended Care Hospital	Hyatt Solomina, Yelena
61497	1/23 - 5/22	M	02:00pm-03:50pm	Windsor Gardens of Anaheim	Harry, Honour

Quilting for Older Adults**CRAE 106**

This course offers the essentials of quilting, for older adults students, which includes fabric selection, cutting, and sewing methods along with the history and vocabulary of the craft. Special techniques for older adults are covered such as patchwork, applique, hand and machine methods, and finishing techniques.

CRN	Dates	Days	Time	Location	Instructor
60253	1/17 - 3/14	T	12:30pm-04:20pm	Buena Park Senior Center	Smith, Larene
60254	3/28 - 5/23	T	12:30pm-04:20pm	Buena Park Senior Center	Smith, Larene
<i>Students must enroll in both CRN 60253 and CRN 60254 to complete a semester.</i>					
60289	1/23 - 3/27	M	08:30am-12:20pm	Cypress Sr Citizen Center	Smith, Larene
60290	4/3 - 5/22	M	08:30am-12:20pm	Cypress Sr Citizen Center	Smith, Larene
<i>Students must enroll in both CRN 60289 and CRN 60290 to complete a semester.</i>					
60483	1/23 - 5/22	M	01:30pm-03:20pm	Leisure World Seal Beach	Smith, Larene
<i>Students must enroll in both CRN 60571 and CRN 60574 to complete a semester.</i>					
<i>Class will be held at Club House #3 (Needle Arts Studio)</i>					
60520	1/13 - 3/10	F	08:30am-12:20pm	Yorba Linda Sr Center	Smith, Larene
60521	3/17 - 5/26	F	08:30am-12:20pm	Yorba Linda Sr Center	Smith, Larene
<i>Students must enroll in both CRN 60520 and CRN 60521 to complete a semester.</i>					

History of Comedy and Humor for Older Adults

HLTH 161

This class offers to older adults an informative look at past and present forms of comedy and humor, as it relates to their life experiences and what make them laugh. Older adult students become aware of the influences, various mediums, elements and forms of comedy and humor that has influences people throughout history.

CRN	Dates	Days	Time	Location	Instructor
60271	1/17 - 5/23	T	09:30am-11:20am	Alamitos West Health Care Center	Fischer, Hildy
61606	1/18 - 5/24	W	09:30am-11:20am	Crescent Landing Garden Grove	Fischer, Hildy
60269	1/19 - 5/24	W	12:30pm-02:20pm	Cottage of Artesia Gardens	Fischer, Hildy
60270	1/19 - 5/25	Th	09:15am-11:05am	Park Regency Care Center	Fischer, Hildy

Painting for Older Adults

CRAE 105

This class offers older adults an individualized approach to learning painting and artistic expression at their own pace and within their interest and style. Older adult will learn techniques in drawing, brush strokes, and color mixing and application.

CRN	Dates	Days	Time	Location	Instructor
60766	1/18 - 3/15	W	12:15pm-02:20pm	Buena Park Senior Center	Hyatt Solomina, Yelena
60768	3/29 - 5/24	W	12:15pm-02:20pm	Buena Park Senior Center	Hyatt Solomina, Yelena
Students must enroll in both CRN 60766 and CRN 60768 to complete a semester.					
60260	1/17 - 5/23	T	09:00am-10:50am	Emerald Isle Senior Apartments	Clary, Ling Ling
61436	1/17 - 3/14	T	01:00pm-04:50pm	Leisure World Seal Beach	Stubblefield, Katie
61437	3/28 - 5/23	T	01:00pm-04:50pm	Leisure World Seal Beach	Stubblefield, Katie
Students must enroll in both CRN 61436 and CRN 61437 to complete a semester.					
<i>Class will be held at Club House #3 (Arts Studio)</i>					
61418	1/21 - 3/18	S	01:00pm-04:50pm	Leisure World Seal Beach	Stubblefield, Katie
61419	4/8 - 5/27	S	01:00pm-04:50pm	Leisure World Seal Beach	Stubblefield, Katie
Students must enroll in both CRN 61418 and CRN 61419 to complete a semester.					
<i>Class will be held at Club House #3 (Arts Studio)</i>					
60764	1/19 - 3/16	Th	12:00pm-03:50pm	Sr Citizens Center Anaheim	Hyatt Solomina, Yelena
60767	3/30 - 5/25	Th	12:00pm-03:50pm	Sr Citizens Center Anaheim	Hyatt Solomina, Yelena
Students must enroll in both CRN 60764 and CRN 60767 to complete a semester.					
61434	1/17 - 5/23	T	01:00pm-02:50pm	Westmont Cypress	Hyatt Solomina, Yelena
61442	1/18 - 3/15	W	08:30am-12:20pm	Yorba Linda Sr Center	Clary, Ling Ling
60262	1/23 - 3/27	M	08:00am-11:50am	Yorba Linda Sr Center	Clary, Ling Ling
61443	3/29 - 5/24	W	08:30am-12:20pm	Yorba Linda Sr Center	Clary, Ling Ling
60261	4/3 - 5/22	M	08:00am-11:50am	Yorba Linda Sr Center	Clary, Ling Ling

Tone Chime Choir for Older Adults

MUSC 304

This course provides instruction to older adults on handbell performance skills using chime instruments made by Suzuki. The music will be beginning level handbell music, level 1 and 2, as defined by the American Guild of English Hand Bell Ringers. The class will share their music by performing to the community in different public venues.

CRN	Dates	Days	Time	Location	Instructor
61158	1/19 - 5/25	Th	10:00am-11:50am	Leisure World Seal Beach	Lassetter, Elizabeth
<i>Class will be held at Club House #3, Room 9</i>					
60435	1/13 - 5/23	W	12:00pm-01:50pm	Sr Citizens Center Anaheim	Lassetter, Elizabeth

Senior Chorus**MUSC 303**

This course introduces older adult students to a broad spectrum of choral music including its cultural and historical aspects. Older adult students will gain knowledge of correct posture, breath control, enunciation, harmony, rhythm and basic music concepts appropriate for the older adult.

CRN	Dates	Days	Time	Location	Instructor
60434	1/13 - 5/26	F	09:30am-11:20am	Cypress Sr Citizen Center	Lassetter, Elizabeth
60857	1/23 - 5/22	M	10:00am-11:50am	Leisure World Seal Beach	Lassetter, Elizabeth

Class will be held at Leisure World Amphitheater

Music Arts for Older Adults**MUSC 200**

This course provides stimulating interaction for older adults through musical reminiscence, discussions, and listening to music from different time periods and genres. Older Adult students will participate in sing-alongs and rhythmic activities. Older adult students will learn to appreciate and understand different varieties of music.

CRN	Dates	Days	Time	Location	Instructor
60866	1/18 - 5/24	W	09:30am-11:20am	Alamitos West Health Care Center	Baker, Nathalie
60446	1/19 - 5/25	Th	10:01am-11:50am	Anaheim Crown Plaza	Park, Moses
60722	1/18 - 5/24	W	09:30am-11:20am	Anaheim VIP Center	Baesler, Joshua
60447	1/13 - 5/26	F	01:00pm-02:50pm	Arbor Palms of Anaheim	Park, Moses
60462	1/19 - 5/25	Th	09:00am-10:50am	Bonita Hills Post Acute	Proppe, Jean
61422	1/13 - 5/26	F	01:30pm-03:20pm	Buena Vista Care Center	Martin, Karen
60835	1/18 - 5/24	W	09:00am-10:50am	Cambridge Court	Behrbaum, Patricia
61429	1/19 - 5/25	Th	02:00pm-03:50pm	Cottage of Artesia Gardens	Martin, Karen
60808	1/13 - 5/23	T	09:00am-10:50am	Crescendo Senior Living of Place	Mastin, Ursula
61435	1/21 - 5/27	S	09:00am-10:50am	Crescendo Senior Living of Place	Mastin, Ursula
60463	1/17 - 5/23	T	09:30am-11:20am	Crescent Landing Garden Grove	Proppe, Jean
60396	1/19 - 5/25	Th	01:00pm-02:50pm	Emerald Court	Behrbaum, Patricia
60442	1/19 - 5/25	Th	01:00pm-02:50pm	Ivy Park at Bradford	Park, Moses
61432	1/19 - 5/25	Th	03:00pm-04:50pm	Ivy Park at Bradford	Park, Moses
60397	1/23 - 5/22	M	09:00am-10:50am	Ivy Park at Bradford	Behrbaum, Patricia
60824	1/13 - 5/26	F	09:30am-11:20am	La Palma Nursing Center	Martin, Karen
60287	1/18 - 5/24	W	12:45pm-02:35pm	Park Anaheim Healthcare Center	Behrbaum, Patricia
60724	1/19 - 5/25	Th	10:00am-11:50am	Park Anaheim Healthcare Center	Baesler, Joshua
60782	1/13 - 5/26	F	03:30pm-05:20pm	Park Regency Ret Res	Baker, Nathalie
61431	1/19 - 5/25	Th	02:00pm-03:50pm	Park Regency Ret Res	Ozment, Gregory
60410	1/13 - 5/26	F	09:30am-11:20am	Park Vista at Morningside	Ediger, Jeremy
60721	1/17 - 5/23	T	09:30am-11:20am	Park Vista at Morningside	Baesler, Joshua
60779	1/18 - 5/24	W	03:30pm-05:20pm	Park Vista at Morningside	Baker, Nathalie
60399	1/17 - 5/23	T	09:00am-10:50am	Rowntree Gardens	Behrbaum, Patricia
60820	1/18 - 5/24	W	01:30pm-03:20pm	Serento Rosa Senior Living	Martin, Karen
60723	1/18 - 5/24	W	01:30pm-03:20pm	St. Elizabeth Healthcare	Baesler, Joshua
60711	1/17 - 5/23	T	01:00pm-02:50pm	Summer House at Walnut Village	Behrbaum, Patricia
61236	1/18 - 5/24	W	09:30am-11:20am	Sunnycrest Senior Living	Park, Moses
60425	1/23 - 5/22	M	01:30pm-03:20pm	Sunrise of Seal Beach	Lassetter, Elizabeth
61415	1/23 - 5/22	M	01:30pm-03:20pm	The Grove Post Acute	Ozment, Gregory
60445	1/18 - 5/24	W	01:00pm-02:50pm	The Pavilion at Sunny Hills	Park, Moses
61445	1/18 - 5/24	W	03:00pm-04:50pm	The Pavilion at Sunny Hills	Park, Moses
60400	1/19 - 5/25	Th	09:30am-11:20am	The Pavilion at Sunny Hills	Behrbaum, Patricia
60720	1/19 - 5/25	Th	02:00pm-03:50pm	West Anaheim Extended Care Hospital	Baesler, Joshua
61466	1/18 - 5/24	W	03:15pm-05:05pm	Westmont Cypress	Ozment, Gregory
61421	1/13 - 5/26	F	01:00pm-02:50pm	Westmont Cypress Compass Rose	Baker, Nathalie
60783	1/19 - 5/25	Th	09:30am-11:20am	Whitten Heights	Baker, Nathalie
60409	1/21 - 5/27	S	09:30am-11:20am	Whitten Heights	Ediger, Jeremy
60398	1/23 - 5/22	M	12:30pm-02:20pm	Whitten Heights	Behrbaum, Patricia
60830	1/19 - 5/25	Th	01:00pm-02:50pm	Whittier Glen	Baker, Nathalie
60444	1/13 - 5/26	F	09:30am-11:20am	Windsor Gardens of Anaheim	Park, Moses

Body & Mind

Help Yourself to Health for Older Adults

HLTH 163

Various health related topics of interest to older adults will be discussed and safe, beneficial, exercises intended to promote general health and fitness for older adults will be introduced. Each class will incorporate information, discussion, and exercises.

CRN	Dates	Days	Time	Location	Instructor
60527	1/13 - 5/26	F	03:00pm-04:50pm	Cypress Sr Citizen Center	Yu, Kenneth
60529	1/13 - 5/26	F	12:30pm-02:20pm	Fullerton Community Center	Yu, Kenneth
60528	1/18 - 5/24	W	12:30pm-02:20pm	Fullerton Community Center	Yu, Kenneth
60757	1/19 - 5/25	Th	12:30pm-02:20pm	Senior Citizens Center Anaheim	Mastin, Kathleen
60515	1/18 - 5/24	W	09:00am-10:50am	Stanton Civic Center	Matikinyidze, Rufaro



Food Preparation and Good Nutrition for Older Adults

HLTH 109

This course offers a wide range of food preparation topics as they relate to the health and well-being of older adults. The course explores topics of interest for older adults in the areas of nutrition, consumerism, cultural traditions, entertaining, health, and safety. Various foods will be prepared, tasted, and discussed.

CRN	Dates	Days	Time	Location	Instructor
61250	1/19 - 5/25	Th	02:00pm-03:50pm	Alamitos West Health Care Center	Villarreal, Maria
60777	1/19 - 5/25	Th	09:30am-11:20am	Gordon Lane Care Center	Villarreal, Maria
60773	1/23 - 5/22	M	09:30am-11:20am	La Palma Nursing Center	Villarreal, Maria
61414	1/23 - 5/22	M	09:00am-10:50am	Leisure World Seal Beach	Atkinson, Anne
61248	1/23 - 5/22	M	01:30pm-03:20pm	Park Vista Assisted Living	Villarreal, Maria
60788	1/17 - 5/23	T	09:00am-10:50am	Serento Rosa Senior Living	Rose, Rachel
60858	1/17 - 5/23	T	01:00pm-02:50pm	Serento Rosa Senior Living	Rose, Rachel
60647	1/17 - 5/23	T	03:15pm-05:05pm	The Grove Post Acute	Atkinson, Anne
60778	1/17 - 5/23	T	09:30am-11:20am	The Pavilion at Sunny Hills	Villarreal, Maria
61420	1/17 - 5/23	T	09:30am-11:20am	Windsor Gardens of Anaheim	Atkinson, Anne

Staying Mentally Sharp for Older Adults

HLTH 167

This course provides older adults with the tools to reach their optimum levels of brainpower through skill-building with memory techniques. Also covered are decision-making, problem-solving, planning, and determining opportunities for cognitive growth.

CRN	Dates	Days	Time	Location	Instructor
60405	1/23 - 3/15	M W	03:30pm-05:20pm	Buena Park Senior Center	Belknap, Jeannie
60406	3/27 - 5/24	M W	03:30pm-05:20pm	Buena Park Senior Center	Belknap, Jeannie
<i>Students must enroll in both CRN 60405 and CRN 60406 to complete a semester.</i>					
60408	1/17 - 3/16	T Th	09:00am-10:50am	Fullerton Community Center	Belknap, Jeannie
60407	3/21 - 5/25	T Th	09:00am-10:50am	Fullerton Community Center	Belknap, Jeannie
<i>Students must enroll in both CRN 60407 and CRN 60408 to complete a semester.</i>					
61425	1/23 - 3/15	M W	01:00pm-02:50pm	La Palma Community Center	Belknap, Jeannie
61426	3/27 - 5/24	M W	01:00pm-02:50pm	La Palma Community Center	Belknap, Jeannie
<i>Students must enroll in both CRN 61425 and CRN 61426 to complete a semester.</i>					
60726	1/13 - 5/26	F	12:00pm-01:50pm	Leisure World Seal Beach	Bloom, Danielle
<i>Class will be held at Club House #3 (Learning Center)</i>					
61416	1/17 - 3/16	T Th	01:00pm-02:50pm	Westmont Cypress	Belknap, Jeannie
61427	3/28 - 5/25	T Th	01:00pm-02:50pm	Westmont Cypress	Belknap, Jeannie
<i>Students must enroll in both CRN 61416 and CRN 61427 to complete a semester.</i>					



Health and Wellness for Older Adults

HLTH 200

Learn the benefits of adopting behaviors associated with healthy and successful aging. Focus on the natural effects of the aging process and the benefits of being proactive by using a healthy diet, managing chronic conditions, and engaging in routine physical activity as a means to living with optimum independence.

CRN	Dates	Days	Time	Location	Instructor
61227	1/18 - 5/24	W	02:00pm-03:50pm	Anaheim Terrace Care Center	Kim, Hannah
60512	1/17 - 5/23	T	10:00am-11:50am	Brea Senior Center	Matikinyidze, Rufaro
60513	1/19 - 5/25	Th	09:30am-11:20am	Brea Senior Center	Matikinyidze, Rufaro
60495	1/23 - 5/22	M	10:00am-11:50am	Brea Senior Center	Layne, Jonathan
60514	1/23 - 5/22	M	09:30am-11:20am	Buena Park Senior Center	Matikinyidze, Rufaro
60523	1/23 - 5/22	M	01:00pm-02:50pm	Buena Park Senior Center	Yu, Kenneth
60753	1/17 - 5/23	T	09:30am-11:20am	Buena Park Senior Center	Mastin, Kathleen
60758	1/17 - 5/23	T	12:30pm-02:20pm	Buena Park Senior Center	Carter-Rosenbloom, Robin
60760	1/19 - 5/25	Th	10:00am-11:50am	Buena Park Senior Center	Carter-Rosenbloom, Robin
60754	1/13 - 5/26	F	09:30am-11:20am	Buena Park Senior Center	Mastin, Kathleen
60487	1/19 - 5/25	Th	01:00pm-02:50pm	Cypress Senior Citizen Center	Layne, Jonathan
60755	1/19 - 5/25	Th	09:45am-11:35am	Cypress Senior Citizen Center	Mastin, Kathleen
60526	1/23 - 5/22	M	10:20am-12:10pm	Cypress Senior Citizen Center	Yu, Kenneth
60752	1/23 - 5/22	M	01:00pm-02:50pm	Cypress Senior Citizen Center	Mastin, Kathleen
60524	1/17 - 5/23	T	12:30pm-02:20pm	Emerald Isle Senior Apartments	Yu, Kenneth
60525	1/19 - 5/25	Th	12:30pm-02:25pm	Emerald Isle Senior Apartments	Yu, Kenneth
60749	1/23 - 5/22	M	09:00am-10:50am	Fullerton Community Center	Wotring, Janine
60759	1/17 - 5/23	T	10:00am-11:50am	Fullerton Community Center	Carter-Rosenbloom, Robin
61423	1/13 - 5/26	F	09:00am-10:50am	Fullerton Community Center	Matikinyidze, Rufaro
60751	1/23 - 5/22	M	10:00am-11:50am	La Habra Community Serv-Sr Center	Mastin, Kathleen
61239	1/19 - 5/25	Th	09:30am-11:20am	Leisure World Seal Beach	Zepeda, Eva
<i>Class will be held at Club House #4 (Section A)</i>					
61424	1/13 - 5/26	F	11:00am-12:50pm	Park Vista Assisted Living	Matikinyidze, Rufaro
60746	1/13 - 5/23	T	12:30pm-02:20pm	Sr Citizens Center Anaheim	Wotring, Janine
60748	1/17 - 5/23	T	10:00am-11:50am	Sr Citizens Center Anaheim	Wotring, Janine
60533	1/17 - 5/23	T	09:00am-10:50am	Stanton Civic Center	Zepeda, Eva
60303	1/23 - 5/22	M	03:15pm-05:05pm	Sun Mar Nursing Center	Kim, Hannah
60531	1/13 - 5/26	F	09:30am-11:20am	Sunrise Asst Liv Fullerton	Zepeda, Eva
61234	1/17 - 5/23	T	01:30pm-03:20pm	The Grove Post Acute	Kim, Hannah
60488	1/18 - 5/24	W	10:00am-11:50am	West Anaheim Senior Program	Layne, Jonathan
60750	1/13 - 5/26	F	09:30am-11:20am	Yorba Linda Senior Center	Wotring, Janine
60490	1/17 - 5/23	T	10:30am-12:20pm	Yorba Linda Senior Center	Layne, Jonathan
60489	1/18 - 5/24	W	02:00pm-03:50pm	Yorba Linda Senior Center	Layne, Jonathan
60812	1/18 - 5/24	W	10:00am-11:50am	Yorba Linda Senior Center	Yu, Kenneth
60486	1/19 - 5/25	Th	10:30am-12:20pm	Yorba Linda Senior Center	Layne, Jonathan
61447	1/23 - 5/22	M	12:00pm-01:50pm	Yorba Linda Senior Center	Wotring, Janine

Health and Wellness for Older Adults: Restricted Mobility

HLTH 205

This course provides older adults with techniques and strategies for healthy aging when restricted by physical impairments or limited mobility. Emphasis is on the benefits of managing age-related complications or medical conditions, routine and adaptive physical activity and a healthy diet.

CRN	Dates	Days	Time	Location	Instructor
60449	1/19 - 5/25	Th	09:30am-11:20am	Alamitos West Health Care Center	Penn, Marcelle
60455	1/17 - 5/23	T	09:30am-11:20am	Anaheim Terrace Care Center	Penn, Marcelle
61242	1/17 - 5/23	T	09:30am-11:20am	Bonita Hills Post Acute	Adams, Stephanie
60535	1/23 - 5/22	M	09:00am-10:50am	Bonita Hills Post Acute	Zepeda, Eva
60861	1/17 - 5/23	T	09:30am-11:20am	Brea Memory Care Community	Smith, Karin
60517	1/17 - 5/23	T	01:00pm-02:50pm	Brookdale Anaheim	Matikinyidze, Rufaro
60516	1/23 - 5/22	M	01:00pm-02:50pm	Brookdale Anaheim	Matikinyidze, Rufaro
60235	1/18 - 5/24	W	01:30pm-03:20pm	Buena Park Nursing Center	Adams, Stephanie
60471	1/19 - 5/25	Th	09:30am-11:20am	Coventry Court Health Center	Smith, Karin
60530	1/19 - 5/25	Th	03:00pm-04:50pm	Gordon Lane Care Center	Yu, Kenneth
60172	1/13 - 5/26	F	09:30am-11:20am	Harbor Villa Care Center	Adams, Stephanie
61448	1/18 - 5/24	W	09:30am-11:20am	Ivy Park at Bradford	Wotring, Janine
60454	1/13 - 5/26	F	10:50am-12:50pm	Park Anaheim Healthcare Center	Penn, Marcelle
60450	1/19 - 5/25	Th	03:00pm-04:50pm	Park Anaheim Healthcare Center	Penn, Marcelle
60473	1/18 - 5/24	W	09:30am-11:20am	Park Regency Care Center	Smith, Karin
60811	1/19 - 5/25	Th	09:30am-11:20am	Park Regency Ret Res	Yu, Kenneth
60470	1/23 - 5/22	M	10:30am-12:20pm	Park Vista Assisted Living	Smith, Karin
60451	1/13 - 5/26	F	08:30am-10:20am	Rowntree Gardens	Penn, Marcelle
60453	1/18 - 5/24	W	01:30pm-03:20pm	Rowntree Gardens	Penn, Marcelle
60452	1/18 - 5/24	W	09:30am-11:20am	St. Elizabeth Healthcare	Penn, Marcelle
61237	1/19 - 5/25	Th	09:30am-11:20am	Sunnycrest Senior Living	Wotring, Janine
60234	1/13 - 5/26	F	01:00pm-02:50pm	The Pavilion at Sunny Hills	Adams, Stephanie
60238	1/23 - 5/22	M	09:30am-11:20am	The Pavilion at Sunny Hills	Adams, Stephanie
60448	1/13 - 5/26	F	01:30pm-03:20pm	Whitten Heights	Penn, Marcelle
60534	1/13 - 5/26	F	02:00pm-03:50pm	Windsor Gardens of Anaheim	Zepeda, Eva



PARENTING

Improve parenting skills.

Deepen connections with the children in your life.

Create a thriving home.

Explore noce.edu/parenting.



Need Translated Instructions?

¿Necesita instrucciones traducidas?

Haga clic en “Traducir” en la esquina superior derecha de la página. Seleccione su idioma para traducir el sitio. O llame al **714.808.4679** para obtener más ayuda.

Program Overview

In a world that is ever-changing, parents, grandparents, foster parents, and guardians can learn positive parenting techniques in a friendly and safe environment.

- Enhance parent and child relationships.
- Learn techniques to raise children and teens who flourish.
- Develop effective communication skills.
- Build positive social, emotional, and creative environments.

Parent-and-Me Classes

Parent-and-Me classes are a lifeline for parents of young children. Enjoyed by an enrolled adult along with a child ages one to five years, parents and other adult caregivers learn about child development through observation and interaction.

Love and Logic® Classes

Love and Logic® courses offer a new and specific way to parent using a unique approach. Parents and caregivers develop practical skills for reinforcing expectations of their children's behavior at home and school. Classes consist of six subsets of skills that empower parents. Love and Logic® is a registered trademark of the Love and Logic® Institute, Inc.

Child Wellness

Students taking these courses will learn how to contribute to the critical factors that ensure children's lifelong health and wellness. Students expand their knowledge to better support, encourage, and connect with the children in their lives and learn to model critical life skills that make a difference now and in the future.

Ready to Get Started?

Once you've applied to NOCE...

1. Register for classes online using myGateway at noce.edu/mygateway.
Check out noce.edu/registration-info for details.
2. Attend class in-person and/or online through Canvas at noce.edu/canvas
3. Optional – Meet with a counselor: [714.808.4682](tel:714.808.4682) or counseling@noce.edu.

Have Questions About Classes?

Call the Parenting Program

[714.808.4915](tel:714.808.4915) or parenting@noce.edu.

Need Registration Help?

Call StarHelp

[714.808.4679](tel:714.808.4679) or starhelp@noce.edu.

★ NOTE

As of January 1, 2023, the COVID-19 vaccination is no longer required, but is still strongly recommended for all persons visiting NOCCCD campuses. More information at noce.edu/vaccine.

Parent-and-Me Classes

Joyful Parenting: Creative Art/Music (Ages 1.5-2.5)

PARN 101

Parent and child will enjoy self-esteem building activities together; songs and music; easel and finger painting; band and blocks; school readiness; crafts and Playdoh. Includes activity ideas to do at home. (Please bring a snack). No Class February 20

CRN	Dates	Days	Time	Location	Instructor
60676	1/19 - 3/16	Th	09:00am-10:50am	Anaheim Campus - 134	Alquiza, Darlene
61469	3/30 - 5/25	Th	09:00am-10:50am	Anaheim Campus - 134	Alquiza, Darlene
60679	1/16 - 3/13	M	09:00am-10:50am	NOCE Cypress Main Office - 117	Sherard, Erin
60674	3/27 - 5/22	M	09:00am-10:50am	NOCE Cypress Main Office - 117	Sherard, Erin
61467	1/18 - 3/15	W	09:00am-10:50am	NOCE Cypress Main Office - 117	Quintanilla, Melissa
61468	3/29 - 5/24	W	09:00am-10:50am	NOCE Cypress Main Office - 117	Quintanilla, Melissa
60680	1/17 - 3/14	T	09:00am-10:50am	Wilshire NOCE 200 BLDG - 204	Alquiza, Darlene
60675	3/28 - 5/23	T	09:00am-10:50am	Wilshire NOCE 200 BLDG - 204	Alquiza, Darlene

Joyful Parenting: Art, Music & Movement (Ages 2.5-5)

PARN 200

Parents are introduced to the latest information about child development and parenting skills, through lecture, discussion, observation and hands-on learning with other students. Age appropriate activities are offered to the children so that parents can learn the importance of developmental stages that prepare children for preschool and/or kindergarten. For all classes, please bring a lunch. No Class February 21, March 2 and March 23

CRN	Dates	Days	Time	Location	Instructor
60690	1/19 - 3/16	Th	11:00am-12:50pm	Anaheim Campus - 134	Alquiza, Darlene
60691	3/30 - 5/25	Th	11:00am-12:50pm	Anaheim Campus - 134	Alquiza, Darlene
61599	2/9 - 5/13	Th	06:00pm-07:30pm	Anaheim Campus - 134	Alquiza, Darlene
61201	1/23 - 3/13	M	11:00am-12:50pm	NOCE Cypress Main Office - 117	Sherard, Erin
60686	3/27 - 5/22	M	11:00am-12:50pm	NOCE Cypress Main Office - 117	Sherard, Erin
61464	1/18 - 3/15	W	11:00am-12:50pm	NOCE Cypress Main Office - 117	Quintanilla, Melissa
61465	3/29 - 5/24	W	11:00am-12:50pm	NOCE Cypress Main Office - 117	Quintanilla, Melissa
60684	1/17 - 3/14	T	11:00am-12:50pm	Wilshire NOCE 200 BLDG - 204	Alquiza, Darlene
61202	3/28 - 5/23	T	11:00am-12:50pm	Wilshire NOCE 200 BLDG - 204	Alquiza, Darlene



Developmental Movement (Ages 1 - 2)

PARN 260

Parents and children are introduced to developmental movement and music for one and two year-olds. Emphasis is on identifying milestone-appropriate large motor skills, coordinated body movements and introductory behaviors associated with demonstrations of self-esteem for this age range.

CRN	Dates	Days	Time	Location	Instructor
61458	1/17 - 3/14	T	09:00am-10:50am	Anaheim Campus - 134	Blandford, Cindy
61459	3/28 - 5/23	T	09:00am-10:50am	Anaheim Campus - 134	Blandford, Cindy
61460	1/18 - 3/15	W	09:00am-10:50am	Anaheim Campus - 134	Blandford, Cindy
61461	3/29 - 5/24	W	09:00am-10:50am	Anaheim Campus - 134	Blandford, Cindy
60695	1/17 - 3/14	T	09:00am-10:50am	NOCE Cypress Main Office - 117	Quintanilla, Melissa
60694	3/28 - 5/23	T	09:00am-10:50am	NOCE Cypress Main Office - 117	Quintanilla, Melissa
60693	1/19 - 3/16	Th	09:00am-10:50am	NOCE Cypress Main Office - 117	Quintanilla, Melissa
60692	3/30 - 5/25	Th	09:00am-10:50am	NOCE Cypress Main Office - 117	Quintanilla, Melissa
61462	1/19 - 3/16	Th	09:00am-10:50am	Wilshire NOCE 200 BLDG - 204	Blandford, Cindy
61463	3/30 - 5/25	Th	09:00am-10:50am	Wilshire NOCE 200 BLDG - 204	Blandford, Cindy

Developmental Movement (Ages 3 - 4.5)

PARN 262

Parents and children are introduced to developmental movement and music for three to four and a half year-olds. Emphasis is on continued tracking of milestone-appropriate large motor skills, coordinated body movements and psychological behaviors associated with demonstrations of self-esteem for this age range.

CRN	Dates	Days	Time	Location	Instructor
61452	1/17 - 3/14	T	11:00am-12:50pm	Anaheim Campus - 134	Blandford, Cindy
61453	3/28 - 5/23	T	11:00am-12:50pm	Anaheim Campus - 134	Blandford, Cindy
61454	1/18 - 3/15	W	11:00am-12:50pm	Anaheim Campus - 134	Blandford, Cindy
61455	3/29 - 5/24	W	11:00am-12:50pm	Anaheim Campus - 134	Blandford, Cindy
60704	1/17 - 3/14	T	11:00am-12:50pm	NOCE Cypress Main Office - 117	Quintanilla, Melissa
60705	3/28 - 5/23	T	11:00am-12:50pm	NOCE Cypress Main Office - 117	Quintanilla, Melissa
60706	1/19 - 3/16	Th	11:00am-12:50pm	NOCE Cypress Main Office - 117	Quintanilla, Melissa
60709	3/30 - 5/25	Th	11:00am-12:50pm	NOCE Cypress Main Office - 117	Quintanilla, Melissa
61456	1/19 - 3/16	Th	11:00am-12:50pm	Wilshire NOCE 200 BLDG - 204	Blandford, Cindy
61457	3/30 - 5/25	Th	11:00am-12:50pm	Wilshire NOCE 200 BLDG - 204	Blandford, Cindy

Raising Thoughtful Children (Ages 1.5-2.5)

PARN 237

Students participate with their child to support social-emotional development as they guide their child to build awareness of self, family, community, and the world. The class uses developmentally appropriate activities for very young children. No classes: February 17, February 23, and March 31

CRN	Dates	Days	Time	Location	Instructor
61472	1/20 - 3/17	F	09:00am-10:50am	Anaheim Campus - 134	Blandford, Cindy
61473	3/31 - 5/26	F	09:00am-10:50am	Anaheim Campus - 134	Blandford, Cindy
61470	1/23 - 3/13	M	09:00am-10:50am	Wilshire NOCE 200 BLDG - 204	Alquiza, Darlene
61471	3/27 - 5/22	M	09:00am-10:50am	Wilshire NOCE 200 BLDG - 204	Alquiza, Darlene

Raising Thoughtful Children (Ages 2.5-5)

PARN 238

Students participate with their child to support social-emotional development as they guide their child to build awareness of self, family, community, and the world. The class uses developmentally appropriate activities that emphasize building a growth mindset and thoughtfulness toward themselves and towards others. No class February 17, February 26 and March 31

CRN	Dates	Days	Time	Location	Instructor
61477	1/20 - 3/17	F	11:00am-12:50pm	Anaheim Campus - 134	Blandford, Cindy
61478	3/31 - 5/26	F	11:00am-12:50pm	Anaheim Campus - 134	Blandford, Cindy
61474	1/16 - 3/13	M	11:00am-12:50pm	Wilshire NOCE 200 BLDG - 204	Alquiza, Darlene
61475	3/27 - 5/22	M	11:00am-12:50pm	Wilshire NOCE 200 BLDG - 204	Alquiza, Darlene

Foundational Parenting Classes

Connected Parenting

PARN 102

This class focuses on strengthening the caregiver-child connections, essential methods in helping children regulate their emotions, improving feelings of safety and security and decrease challenging behaviors. These are simple, research-based techniques for every parent who wants to build a life-long positive relationship with their child.

CRN	Dates	Days	Time	Location	Instructor
Partially Online					
61206	2/20 - 4/7	Remote	Remote	HYBRID	Carter, Chivonne
	2/22 - 4/5	W	12:00pm-12:50pm	Wilshire NOCE 200 BLDG - 203	Carter, Chivonne
1-hour weekly in-person meeting; remainder of course is online.					
Fully Online					
61203	4/17 - 5/26	Remote	Remote	ZOOM	Carter, Chivonne
1.5-hour Zoom meeting on Tuesdays 9-10:30 a.m.; remainder of course online.					

Love and Logic® Classes

Love and Logic® is a registered trademark of the Love and Logic Institute, Inc.

Parenting with Love and Logic®

PARN 265

This course assists parents and caregivers in developing practical skills for reinforcing the expectations their children experience at home and in school. Utilizing The Love and Logic® approach, this course will teach six subsets of skills that encourage home environments that stimulate responsibility, prevent misbehavior, and encourage setting healthy limits. No class March 31

CRN	Dates	Days	Time	Location	Instructor
Partially Online					
60156	1/30 - 3/10	Remote	Remote	HYBRID	Sherard, Erin
	2/2 - 3/9	Th	06:30pm-08:00pm	Sierra Vista Elementary School, MPR	Sherard, Erin
<i>Fast-track six-week course. 1.5-hour weekly in-person meeting; remainder of course is online. Spanish translation will be available.</i>					
60157	2/6 - 3/17	Remote	Remote	HYBRID	Sherard, Erin
	2/8 - 3/15	W	04:30pm-06:00pm	Key Elementary School - MPR	Sherard, Erin
<i>Fast-track six-week course. 1.5-hour weekly in-person meeting; remainder of course is online. Spanish translation will be available.</i>					
61207	2/27 - 4/21	Remote	Remote	HYBRID	Sherard, Erin
	3/3 - 4/21	F	09:00am-10:30am	Cypress Tech Ed 2 - 215	Sherard, Erin
<i>Fast-Track course paced over six weeks. 1.5-hour weekly in-person meeting; remainder of course is online.</i>					
61510	2/27 - 4/14	Remote	Remote	HYBRID	Sherard, Erin
	3/2 - 4/13	Th	09:00am-10:30am	Buena Park High School - 13	Sherard, Erin
<i>Fast-track six-week course. 1.5-hour weekly in-person meeting; remainder of course is online. Spanish translation will be available. Check-in via room 25 (administrative offices) with ID.</i>					

Fully Online

60159	4/10 - 5/19	Remote	Remote	ZOOM	Sherard, Erin
<i>Fast-Track course paced over six weeks. Weekly Zoom meeting on Wednesdays, 7-9:00 p.m. Spanish translation will be available.</i>					

Love and Logic: Supporting Youth with Special Needs™

PARN 268

This course is designed to support adults parenting or supporting youth with disabilities by developing practical skills for reinforcing the expectations of children at home and in school. By utilizing the Love and Logic® approach, this course will teach four subsets of skills that encourage home environments that stimulate positive relationship development, empathetic listening, realistic goal setting, and encourage independence. The information included in this course is for those who already have a strong understanding of the Love and Logic® approach.

CRN	Dates	Days	Time	Location	Instructor
61505	1/23 - 2/24	Remote	Remote	HYBRID	Sherard, Erin
	1/24 - 2/21	T	08:00am-09:50am	Golden Elementary School	Sherard, Erin
<i>Fast-track five-week course. 2-hour weekly in-person meeting; remainder of course is online.</i>					

Love and Logic: Adults Supporting Youth with Challenging Pasts™

PARN 269

This course assists parents and caregivers in understanding how trauma and hurtful events affect a child's brain. Students will learn the importance of bonding and relationships and how to address the root causes of a child's behavior through practicing empathy, establishing boundaries, and building healthy relationships. No class April 3-7

CRN	Dates	Days	Time	Location	Instructor
61577	2/27 - 4/20	Remote	Remote	HYBRID	Sherard, Erin
	2/28 - 4/18	T	08:00am-09:50am	Golden Elementary School	Sherard, Erin
<i>Fast-track six-week course. 1-hour weekly in-person meeting; remainder of course is online. No classes the weeks of March 20-24 and April 03-07.</i>					
60160	3/27 - 5/2	Remote	Remote	HYBRID	Sherard, Erin
	3/28 - 5/2	T	12:00pm-12:50pm	Wilshire NOCE 200 BLDG - 203	Sherard, Erin
<i>Fast-track six-week course. 2-hour weekly in-person meeting; remainder of course is online.</i>					

Child Wellness

Building Trauma-Informed Communities (BTIC)

BTIC: Adverse Childhood Experiences

PARN 300

This course assists parents and caregivers in learning about the effects of childhood adversity, toxic stress, and the impact on health and well-being. Tools are provided to help parents and caregivers address their personal histories in order to provide attuned, nurturing care. Tools are also provided to promote healing and resilience in children.

CRN	Dates	Days	Time	Location	Instructor
61210	3/27 - 5/19	Remote	Remote	HYBRID	De La Mora, Jamie
	3/30 - 5/18	Th	11:30am-12:50pm	Anaheim Campus - 116	De La Mora, Jamie
<i>1.5-hour weekly in-person meeting; remainder of course is online.</i>					

BTIC: Early Childhood and Infancy

PARN 301

This course assists parents and caregivers in learning the importance of connection (attachment and bonding) as the building blocks to infant/early childhood social emotional and cognitive development. The focus is on exploring ways parents and caregivers can provide responsive and attuned care while increasing lifelong resilience for their children

CRN	Dates	Days	Time	Location	Instructor
61503	1/23 - 3/17	Remote	Remote	ZOOM - ZOOM	Carter, Chivonne
<i>1.5 hour Zoom meeting on Thursdays 7-8:30 p.m.; remainder of course online.</i>					
61511	3/27 - 5/19	Remote	Remote	ZOOM	Carter, Chivonne
<i>1.5-hour Zoom meeting on Tuesdays 12 - 1:30 p.m.; remainder of course online.</i>					

BTIC: Family Dynamics

PARN 303

This course assists parents and caregivers in learning the characteristics needed for healthy environments and relationships in the home while recognizing the uniqueness of each family dynamic. The focus is on ways parents and caregivers can care for themselves while providing the stability needed to meet the physical and emotional needs of children.

CRN	Dates	Days	Time	Location	Instructor
61212	3/27 - 5/19	Remote	Remote	ZOOM	De La Mora, Jamie
<i>1.5-hour Zoom meeting on Tuesdays 10-11:30 a.m.; remainder of course online.</i>					

BTIC: Mental Health in Our Homes

PARN 304

This course provides parents and caregivers an overview on mental health in order to provide awareness and understanding. The focus is on exploring factors that influence mental health in our homes, protective measures, and skills needed to aid in healthy coping and regulation strategies for parents, caregivers, and youth in the community.

CRN	Dates	Days	Time	Location	Instructor
61512	4/17 - 5/12	Remote	Remote	HYBRID	Carter, Chivonne
	4/19 - 5/10	W	04:30pm-06:00pm	Key Elementary School	Carter, Chivonne
<i>1.5-hour weekly in-person meeting; remainder of course is online. Spanish translation will be available.</i>					

BTIC: Human Trafficking Awareness and Prevention

PARN 306

This course provides an overview on Human Trafficking from a survivor's perspective in order to provide awareness in our homes, schools, and communities. The focus is on exploring definitions, risk factors, and skills needed to aid in prevention and protection for our youth.

CRN	Dates	Days	Time	Location	Instructor
61219	3/27 - 5/15	Remote	Remote	Zoom	De La Mora, Jamie
<i>1.5-hour Zoom meeting on Mondays 6 - 7:30 p.m.; remainder of course is online. Spanish translation will be available.</i>					

BTIC: Internet Safety and Awareness

PARN 307

The purpose of this course is to help parents and caregivers gain awareness and understanding around the online world and how it works. The benefits and risks associated with the Internet will be explored along with the tools needed to help children stay safe while they engage in technology use.

CRN	Dates	Days	Time	Location	Instructor
61506	2/20 - 3/17	Remote	Remote	HYBRID	De La Mora, Jamie
	2/24 - 3/17	F	10:00am-10:50am	Ponderosa Park Family Resource	De La Mora, Jamie
<i>1-hour weekly in-person meeting; remainder of course is online. Spanish translation will be available.</i>					



COMMUNITY SERVICES

Learn new skills.

Personal enrichment, business, fine arts, and more.

Explore noce.edu/grow.



Need Translated Instructions?

¿Necesita instrucciones traducidas?

Haga clic en "Traducir" en la esquina superior derecha de la página. Seleccione su idioma para traducir el sitio. O llame al **714.808.4679** para obtener más ayuda.

Program Overview

Explore, Improve, and Grow

The Community Services program provides a variety of classes and opportunities that support personal enrichment, skills to improve your career, and a variety of arts to keep you engaged. Visit noce.edu/grow.

Popular Topics

Offered Now:

- Business and Professional Development
- Fine and Applied Arts

Offered in the Near Future:

- Language Arts
- Fitness, Wellness, and Dance
- Kids' College and Teen Program

*NOCE will not be hosting Kids' College and Teen Program classes for the 2023 Spring Semester. Check online for the latest class schedule at noce.edu/grow.

ED2Go

Fee-Based Online Courses for Personal and Professional Development
For more information, visit: <https://www.ed2go.com/noce>.

Fee-Based Online Courses for Career Training
For more information, visit: <https://careertraining.ed2go.com/easyed>.

Ready to Get Started?

Registration for personal enrichment and Kids' College courses is an easy application process that is different from our tuition-free programs. Visit noce.edu/grow.

- 1. Apply:** Create a new student or household profile
- 2. Browse classes:** Click on the "BROWSE" dropdown button to view available classes and categories.
- 3. Register for classes:** Click "ADD TO CART" to select the class you want to take. You can add multiple classes to your cart before checkout. Follow prompts to confirm and pay for classes.

Have Questions about Classes?

Call the Community Services Program

714.808.4909 or grow@noce.edu.

Need Registration Help?

Call StarHelp

714.808.4679 or starhelp@noce.edu.

★ NOTE

As of January 1, 2023, the COVID-19 vaccination is no longer required, but is still strongly recommended for all persons visiting NOCCCD campuses. More information at noce.edu/vaccine.

Information and Policies

For more details, visit noce.edu/academic-policies.

Open Enrollment

By District policy, “every course, course section or class shall be open to enrollment and participation by any person who has been admitted to North Orange Continuing Education (NOCE).”

Class Schedule Subject to Change

NOCE has made every reasonable effort to determine that this class schedule is accurate; however, changes may occur after press time. See the online, searchable class schedule for the most up-to-date information at noce.edu/schedule.

Parking

Parking permits are required to park at Fullerton College and at the Wilshire Center. Permits will be available in the 300 building, Admissions and Records office at the Wilshire Center at no charge for registered students.

At this time, Anaheim Campus and Cypress Center do not require permits to park. Students must park in marked spaces for on-campus classes at the Anaheim Campus, Cypress Center, and Wilshire Center.

Class Information

For details on the information listed below, visit noce.edu/academic-policies.

- Admission to Classes
- Tuition-Free Classes
- Auditing Classes
- Class Attendance/Cancellations
- Weekend Policy
- In-Class Registration
- Children in Class
- Campus Bookstores
- Waitlist Policies
- Minor Students

Fees/Payments

For more information regarding fees/payment information, including class fees, paying for class, holds, and refunds, visit noce.edu/academic-policies.

Tuition-free (apportionment) classes are offered through the state of California and funded based on class attendance. NOCE offers the following apportionment classes:

- English as a Second Language
- Citizenship for Immigrants
- Elementary and Secondary Basic Skills
- Health and Safety
- DSS (Substantial Disabilities)
- Parenting
- Home Economics
- Older Adults (Emeritus)
- Short-Term Vocational (Career Technical Education)
- Workforce Preparation

Information and Policies

Records and Identification Cards

For more information on records and identification cards, visit noce.edu/academic-policies.

- Student Records
- Records and Release of Records
- Classification of Students
- Catalog Rights Policy

Grading Policy

For detailed grading policy information, visit noce.edu/academic-policies.

- Grade Appeal Policy
- Academic Honesty

Information Change

For more information regarding information change, visit noce.edu/academic-policies.

A student may submit a request to update their legal or chosen name as well as sex in compliance with NOCCCD Administrative Procedure (AP) 5041.

Changes can be made to the following at any NOCE Admissions and Records Office:

- Legal Name/Legal Sex
- Chosen Name/Gender Identity
- Gender and Gender Identity

Campus Safety

For details on campus safety, visit noce.edu/safety.

For any emergency, dial 9-1-1.

To reach Campus Safety, call the following numbers by NOCE Center:

- Anaheim Campus Safety: **714.808.4911**
- NOCE Cypress Center (Cypress College Campus Safety): **714.484.7387**
- NOCE Wilshire Center (Fullerton College Campus Safety): **714.992.7777**

Victims of Sexual Assault

Students who are victims of sexual assault occurring on District property or at an off-site location maintained by the District, or for those seeking information or assistance regarding a sexual assault, should contact a Campus Safety Office, listed above.

All inquiries will be maintained in confidence, except as may otherwise be required by law. For more information or additional assistance, contact:

Martha Gutierrez, NOCE Title IX Coordinator/Vice President of Student Services
North Orange Continuing Education, 1830 W. Romneya Drive, Anaheim, CA 92801
Telephone: **714.808.4660** | E-mail: mgutierrez@noce.edu

Student Conduct Policy

For the full Student Conduct Policy, visit noce.edu/academic-policies.

The standards of student conduct and disciplinary action for violation of Board Policy 5500 were approved by the NOCCCD Board on January 28, 2003, and were drawn in compliance with Sections 66300, 76030, 76033, 7034, 76036 of the State Education Code.

Board Policies and Procedures

For additional policies and procedures enacted by the NOCCCD Board of Trustees, visit noce.edu/policies.

Non-Discrimination Statement

The policy of the North Orange County Community College District is to provide an educational, employment, and business environment, including but not limited to access to its services, classes, and programs in which no person shall be unlawfully denied full and equal access to the benefits of, or be unlawfully subjected to discrimination on the basis of ethnic group identification, national origin, religion, age, sex, gender, gender identification, gender expression, race, color, medical condition, genetic information, ancestry, sexual orientation, marital status, physical or mental disability, or military and veteran status, or as otherwise prohibited by state and federal statutes, or because he or she is perceived to have one or more foregoing characteristics, or based on association with a person or group with one or more of these actual perceived characteristics in any program or activity of the District that is administered by, directly funded by, or that receives any financial assistance from the Chancellor or Board of Governors of the California Community Colleges. Discrimination on the basis of sex or gender also includes sexual harassment.

Disability Support Services

NOCE provides support services to enable persons with disabilities to participate in classes and programs. Support may include educational coaching, interpreter service, note takers, or other assistance. See the Disability Support Services section in this schedule for additional class listings. For accommodations or more information, contact **714.484.7057** or disabilitysupport@noce.edu.

Accreditation

For more information, visit noce.edu/accreditation or contact WASC at:



Accrediting Commission for Schools, Western Association of Schools and Colleges
533 Airport Blvd., Suite 200, Burlingame, California 90410
Website: <https://www.acswasc.org/>

NOCCCD Board of Trustees

Jacqueline Rodarte, President
Ed Lopez, JD, Vice President
Evangelina Rosales, Secretary
Ryan Bent, Member
Stephen T. Blout, Member
Jeffrey P. Brown, Member

Barbara Dunsheath, Ed.D., Member
Kisha Mehta, Student Trustee – Cypress College
Paloma Foster, Student Trustee – Fullerton College
Dr. Byron D. Clift Breland, NOCCCD Chancellor
Valentina Purtell, President, North Orange Continuing Education

RESIDENTIAL CUSTOMER

**YOU ARE NOCE.
APPLY TODAY!**

**Many in-person
and online classes**

ACTIVE OLDER ADULTS/
EMERITUS

CAREER TRAINING IN
HIGH-DEMAND PROFESSIONS

CHILD WELLNESS

CITIZENSHIP PREPARATION

COLLEGE PREPARATION

COMMUNITY SERVICES

ENGLISH AS A SECOND
LANGUAGE

HIGH SCHOOL DIPLOMA AND
GED/HISET PREPARATION

PARENTING

TRAINING FOR ADULTS
WITH DISABILITIES



**StarHelp
Customer Service**

📞 **714.808.4679**
✉️ **starhelp@noce.edu**
🌐 **noce.edu**



Accredited by the Accrediting Commission for Schools,
Western Association of Schools and Colleges
533 Airport Blvd, Suite 200
Burlingame, CA 94010
🌐 **www.acswasc.org**